

TANKE

TANKE

2025

产品手册 Product brochure

目录 Catalog

自行车整车 / Bicycle whole vehicle	01 — 05
自行车车架 / Bicycle frame	06 — 14
自行车前叉 / Bicycle fork	15 — 27
自行车花鼓 / Bicycle Hubs	28 — 37
自行车轮组 / Bicycle wheel set	38 — 49
自行车刹车系统 / Bicycle brake system	50 — 58
自行车脚踏板 / Bicycle pedal	59 — 63
自行车曲柄、牙盘、中轴、链条 / Bicycle transmission system	64 — 70
自行车把立、车把 / Bicycle stem、handlebar	71 — 82
自行车碟片、来令片、夹器 / Bicycle Brake Parts	83 — 87
自行车坐垫、座管、坐管夹 / Bicycle seat cushion, seat tube seat tube clamp	88 — 92
自行车把套、下管保护贴 / Bicycle handlebar case	93 — 95
自行车五金配件、其他 / Bicycle hardware accessories	96 — 105

Bicycle whole vehicle
自行车整车

TANKE



炫彩色 / Colorful



橙色 / Orange

TANKE

TANKE软尾山地自行车

碳纤维山地车12速29寸避震越野

TANKE Carbon fiber mountain bike 12 Speed
29-inch shock absorber off-road

车架	高模量碳纤维/EPS工艺/内走线/亮光烤漆/UV镭射拉丝标
把组	PROHONSUN / TANKE 轻量铝合金/镭刻标/大燕把31.8*700/ 立管90/双钉座管31.6*380mm
前叉	TANKE 镁铝合金内管线控气叉
指拨	SHIMANO deore M6100-12速
前拨	SHIMANO deore M6100-12速
后拨	SHIMANO deore M6100-12速
牙盘	TANKE 铝合金中空牙盘
飞轮	TANKE-12速
链条	TANKE-YBN-12速
刹车	TANKE油压碟刹
车胎	INNOVA 黄边 / MAXXIS 29*2.1

Frame	torm100 high modulus carbon fiber / EPS process / internal wiring / bright light baking paint / UV laser drawing label
Handle Group	PROHONSUN / TANKE lightweight aluminum alloy/ radium engraved mark/ Dayan handle 31.8 * 700 / vertical pipe 90 / double nail seat pipe 31.6 * 380mm
Front Fork	TANKE magnesium aluminum alloy inner tube wire controlled air fork
Shifter	SHIMANO deore M6100-12 speed
Front derailleur	SHIMANO deore M6100-12 speed
Rear derailleur	SHIMANO deore M6100-12 speed
Crankset	TANKE aluminum alloy hollow crankset
FreeWheel	TANKE-12 speed
Chain	TANKE-YBN-12 speed
Brake	TANKE oil pressure disc brake
Tire	INNOVA yellow edge / MAXXIS 29*2.1"



红色 / Red



灰色 / Grey

TANKE

TANKE山地自行车

碳纤维山地车 12速 27.5寸 越野

Carbon fiber mountain bike 12 Speed 27.5-inch off-road

车架	STORM100 高模量碳纤维/EPs工艺/内走线/亮光烤漆/UV辐射拉丝标
把组	PROHONSUN / TANKE 轻量铝合金/刻标/大燕把31.8*700/立管90/双钉座管31.6*380mm
前叉	TANKE镁铝合金内管线控气叉指拨 SHIMANO deore M6100-12速
指拨	SHIMANO deore M6100-12速
前拨	SHIMANO deore M6100-12速
后拨	SHIMANO deore M6100-12速
牙盘	TANKE 铝合金中空牙盘
飞轮	TANKE-12速
链条	TANKE-YBN-12速
刹车	TANKE油压碟刹
车胎	KENDA
Frame	Storm100 high modulus carbon fiber / EPS process internal wiring / bright light baking paint / UV laser drawing label
Handle Group	PROHONSUN / TANKE lightweight aluminum alloy / radium engraved mark / Dayan handle 31.8*700 / vertical pipe 90 / double nail seat pipe 31.6*380mm
Front Fork	TANKE magnesium aluminum alloy inner tube wire controlled air fork
Shifter	SHIMANO deore M6100-12 speed
Front derailleur	SHIMANO deore M6100-12 speed
Rear derailleur	SHIMANO deore M6100-12 speed
Crankset	TANKE aluminum alloy hollow crankset
FreeWheel	TANKE-12 speed
Chain	TANKE-YBN-12 speed
Brake	TANKE oil pressure disc brake
Tire	KENDA



软尾Mo1山地自行车

碳纤维软尾避震越野

Aluminum alloy earth slope suspension for off-road driving

车架	碳纤维软尾避震越野
把组	PROHONSUN /TANKE 轻量铝合金/镭刻标/大燕把31.8*700/ 立管90/双钉座管31.6*380mm
前叉	TANKE 镁铝合金内管BOOST桶轴气叉
牙盘	TANKE 铝合金中空牙盘
飞轮	TANKE-12速
链条	TANKE-YbN-12速
刹车	TANKE TB650四活塞液压碟刹
车胎	INNOVA 黄边 / MAXXIS 27.5*2.4/29*2.4

Frame	Carbon fiber full-suspension mountain bike
Handle Group	PROHONSUN / TANKE lightweight aluminum alloy/ radium engraved mark / Dayan handle 31.8 * 700 /vertical pipe 90 / double nail seat pipe 31.6 *380mm
Front Fork	TANKE BOOST thru-axle air fork
Crankset	TANKE aluminum alloy hollow crankset
Freewheel	TANKE-12 speed
Chain	TANKE-YbN-12 speed
Brake	TANKE TB650 four-piston hydraulic disc brake
Tire	INNOVA Yellow Edge / MAXXIS 27.5.4/29.2.4

可选颜色：变色龙、糖果色

Available colors: Chameleon color/Candy color



可选颜色：黑色、紫色、橙色、白色、灰色、粉色

Available colors: black, purple, orange, white, gray, pink

TANKE

AM850山地自行车

碳纤维山地车12速26/27.5/29寸避震越野

TANKE Carbon fiber mountain bike 12 Speed
26/27.5/29-inch shock absorber off-road

车架	高模量碳纤维/EPS工艺/内走线/亮光烤漆/UV镭射拉丝标
把组	PROHONSUN /TANKE 轻量铝合金/镭刻标/大燕把31.8*700/ 立管90/双钉座管31.6*380mm
前叉	TANKE 镁铝合金内管线控气叉
指拨	SHIMANO deore M6100-12速
前拨	SHIMANO deore M6100-12速
后拨	SHIMANO deore M6100-12速
牙盘	TANKE 铝合金中空牙盘
飞轮	TANKE-12速
链条	TANKE-YBN-12速
刹车	TANKE油压碟刹
车胎	INNOVA 黄边 / MAXXIS 26/27.5/29
Frame	torm100 high modulus carbon fiber / EPS process /internal wiring / bright light baking paint / UV laser drawing label
Handle Group	PROHONSUN / TANKE lightweight aluminum alloy/ radium engraved mark / Dayan handle 31.8 * 700 /vertical pipe 90 / double nail seat pipe 31.6 *380mm
Front Fork	TANKE magnesium aluminum alloy inner tube wire controlled air fork
Shifter	SHIMANO deore M6100-12 speed
Front derailleur	SHIMANO deore M6100-12 speed
Rear derailleur	SHIMANO deore M6100-12 speed
Crankset	TANKE aluminum alloy hollow crankset
FreeWheel	TANKE-12 speed
Chain	TANKE-YBN-12 speed
Brake	TANKE oil pressure disc brake
Tire	INNOVA yellow edge / MAXXIS 26/27.5/29

Bicycle frame
自行车车架

TANKE

Black-Purple



Blue-Purple



Black



Gray



Purple



TANKE

Tk3铝合金山地车架

Bicycle carbon fiber frame

型号	Tk3
材质	铝合金
用途	山地车
刹车	碟刹
座杆	31.6mm
中轴	BB68 螺纹
尺寸	17英寸
最大轮胎	26er*2.6英寸
碗组	1-1/8"-1-1/2" (44-56)
重量	2284g ± 20g

Model	Tk3
Material	Aluminium alloy
Usage	Mountain bike
Brakes	Disc brake
Seat pole	31.6mm
Central axis	BB68 thread
Size	17 inches
Tire maximum	26er * 2.6 inches
Headset	1-1/8"-1-1/2" (44-56)
Weight	2284g ± 20g

Black-Purple



Pink-white



Black-gray



Black-white



Black-red



TANKE

24寸儿童碳纤维车架

Aluminum alloy soft tail frame

型号	儿童车架
材质	碳纤维
用途	山地车
类型	142*12mm
刹车	碟刹
座杆	31.6mm
中轴	BB68 螺纹
尺寸	24寸
最大轮胎	24*2.4 英寸
碗组	42-52mm
重量	/

Model	children's frame
Material	Aluminium alloy
Usage	Mountain bike
Type	142 * 12mm
Brakes	Disc brake
Seat pole	31.6mm
Central axis	BB68 thread
Size	24 inches
Tire maximum	24*2.4 inches
Headset	42-52mm
Weight	/



TANKE

M10碳纤维软尾车架

M10 carbon fiber soft tail frame

型号	M-10
材质	T800碳纤维
用途	山地车
类型	BoOsT 148*12mm
刹车	碟刹
座杆	31.6mm
中轴	Bb 92 压入
尺寸	(s) 15.5 英寸 / (m) 17.5 英寸
最大轮胎	29er*2.35 英寸 / 27.5er*2.8 英寸
碗组	1-1/8"-1-1/2" (44-56)
重量	2700g ± 20g (m)

Model	M-10
Material	T800 carbon fiber
Usage	Mountain bike
Type	BoOsT 148 * 12mm
Brakes	Disc brake
Seat pole	31.6mm
Central axis	Bb 92 pressed in
Size	(s) 15.5 inches/(m) 17.5 inches
Tire maximum	29er * 2.35 inches/27.5er * 2.8 inches
Headset	1-1/8"-1-1/2" (44-56)
Weight	2700g ± 20g (m)



M09碳纤维软尾车架

M09 carbon fiber soft tail frame

型号	M-09
材质	T800碳纤维
用途	山地车
类型	BoOsT 148*12mm
刹车	碟刹
座杆	31.6mm
中轴	Bb 92 压入
尺寸	(s) 15.5 英寸 / (m) 17.5 英寸
最大轮胎	29er*2.35 英寸 / 27.5er*3.0 英寸
碗组	1-1/8"-1-1/2" (44-56)
重量	2100g ± 40g

Model	M-09
Material	T800碳纤维
Usage	山地车
Type	BoOsT 148*12mm
Brakes	碟刹
Seat pole	31.6mm
Central axis	Bb 92 压入
Size	(s) 15.5 英寸 / (m) 17.5 英寸
Tire maximum	29er*2.35 英寸 / 27.5er*3.0 英寸
Headset	1-1/8"-1-1/2" (44-56)
Weight	2100g ± 40g

TANKE

桶轴碳纤维车架

Barrel axle carbon fiber frame



型号	TANKE
材质	T800碳纤维
用途	山地车
类型	BoOST 148*12mm
刹车	碟刹
座杆	31.6mm
中轴	Bb73螺纹
尺寸	(s) 15.5 英寸 / (m) 17.5 英寸
最大轮胎	29er*2.35 英寸 / 27.5er*2.8 英寸
碗组	1-1/8"-1-1/2" (44-56)
重量	1405g ± 20g (m)

Model	TANKE
Material	T800 carbon fiber
Usage	Mountain bike
Type	BoOST 148 * 12mm
Brakes	Disc brake
Seat pole	31.6mm
Central axis	Bb73 thread
Size	(s) 15.5 inches/(m) 17.5 inches
Tire maximum	29er * 2.35 inches/27.5er * 2.8 inches
HeadSet	1-1/8" - 1-1/2" (44-56)
Weight	1405g ± 20g (m)



变色龙亲子套装碳纤维车架

Chameleon Parent child set carbon Fiber Frame

型号	TANKE
材质	T800碳纤维
用途	山地车
类型	BoOST 148*12mm
刹车	碟刹
座杆	31.6mm
中轴	Bb 73 螺纹
尺寸	(s) 15.5 英寸 / (m) 17.5 英寸
最大轮胎	29er*2.35 英寸 / 27.5er*2.8 英寸
碗组	1-1/8"-1-1/2" (44-56)
重量	1405g ± 20g (m)

Model	TANKE
Material	T800 carbon fiber
Usage	Mountain bike
Type	BoOST 148 * 12mm
Brakes	Disc brake
Seat pole	31.6mm
Central axis	Bb 73 thread
Size	(s) 15.5 inches/(m) 17.5 inches
Tire maximum	29er * 2.35 inches/27.5er * 2.8 inches
HeadSet	1-1/8" - 1-1/2" (44-56)
Weight	1405g ± 20g (m)

Glossy black



Matte black



TANKE

山地车碳纤维车架

Carbon fiber frame for mountain bikes

型号	M-08
材质	T800碳纤维
用途	山地车
类型	BoOST 148*12mm
刹车	碟刹
座杆	31.6mm
中轴	BB73 螺纹
尺寸	(s) 15英寸 / (m) 17英寸 / (L) 19英寸
最大轮胎	29er*2.35英寸
碗组	1-1/8"-1-1/2" (44-56)
重量	1193g ± 20g (17英寸)

Model	M-08
Material	T800 carbon fiber
Usage	Mountain bike
Type	BoOST 148 * 12mm
Brakes	Disc brake
Seat pole	31.6mm
Central axis	BB73 thread
Size	(s) 15 inches/(m) 17 inches/(L) 19 inches
Tire maximum	29er * 2.35 inches
Headset	1-1/8" - 1-1/2" (44-56)
Weight	1193g ± 20g (17 inches)



Black-red



Black-white



Black-green



Black-purple



Black-gray



Blue-pink

TANKE

山地车碳纤维车架

Aluminum alloy soft tail frame

型号	Tk5
材质	碳纤维
用途	山地车
类型	BoOST 148*12mm
刹车	碟刹
座杆	31.6mm
中轴	BB92 压入式
尺寸	(s) 15 英寸 / (m) 16.5英寸 / (l) 18.5英寸
最大轮胎	29er*2.2 英寸
碗组	52mm
重量	(s) 1267g / (m) 1291g / (l) 1334g

Model	Tk5
Material	Aluminium alloy
Usage	Mountain bike
Type	Boost 148 * 12mm
Brakes	Disc brake
Seat post	31.6mm
Central axis	BB92 pressing in
Size	(s) 15 inches / (m) 16.5 inches / (l) 18.5 inches
Tire maximum	29er * 2.2 inches
Headset	52mm
Weight	(s) 1267g / (m) 1291g / (l) 1334g



TANKE

山地车碳纤维车架

Aluminum alloy soft tail frame

型号	儿童车架
材质	碳纤维
用途	山地车
类型	142*12mm
刹车	碟刹
座杆	31.6mm
中轴	BB68 螺纹
尺寸	24寸
最大轮胎	24*2.4 英寸
碗组	42-52mm
重量	/

Model	children's frame
Material	Aluminium alloy
Usage	Mountain bike
Type	142 * 12mm
Brakes	Disc brake
Seat pole	31.6mm
Central axis	BB68 thread
Size	24 inches
Tire maximum	24*2.4 inches
Headset	42-52mm
Weight	/



White



Pink



Grey



Chameleon



Dark grey



Purple

TANKE

AM850铝合金车架

Aluminum alloy frame AM850

型号	AM850
材质	铝合金
用途	山地车
类型	BoOST 148*12mm
刹车	碟刹
座杆	31.6mm
中轴	BB68 螺纹
尺寸	(s) 15 英寸 / (m) 17英寸
最大轮胎	27.5er*2.6 英寸
碗组	1-1/8"-1-1/2" (44-56)
重量	1193g ± 20g (17英寸)

Model	AM850
Material	Aluminium alloy
Usage	Mountain bike
Type	BoOST 148 * 12mm
Brakes	Disc brake
Seat pole	31.6mm
Central axis	BB68 thread
Size	(s) 15 inches/(m) 17 inches
Tire maximum	27.5er * 2.6 inches
Headset	1-1/8" -1-1/2" (44-56)
Weight	1193g ± 20g (17 inches)



Bicycle fork
自行车前叉

TANKE



TANKE

气压避震前叉TF32快拆

Pneumatic shock absorber front fork TF32 barrel shaft

型号	TF32	Model	TF32
尺寸	26 / 27.5 / 29er	size	26 / 27.5 / 29er
行程	120-140mm	Journey	120-140mm
开档	100mm	Open gear	100mm
刹车	碟刹	Brakes	Disc brake
轮轴	10mm	Wheel axle	10mm
版本	肩控 (直/锥管)	Version	Shoulder control (Straight/Tapered Pipe)
竖管长度	220mm	Vertical pipe length	220mm
竖管直径	28.6mm-30mm	Vertical pipe diameter	28.6mm-30mm
上叉管直径	33.9mm	Upper fork tube diameter	33.9mm
下叉管直径	39.9mm	Lower fork tube diameter	39.9mm
材质	铝合金	Material	aluminium alloy
重量	1750g±50g	Weight	1750g±50g



TANKE

气压避震前叉TF32桶轴

Pneumatic shock absorber front fork TF32 barrel shaft



TF32-Golden tube

Black

TF32-Golden tube

Gold

TF32-Golden tube

Orange

型号	TF32	Model	TF32
尺寸	27.5 / 29er	size	27.5/29er
行程	120mm	Journey	120mm
开档	110mm	Open gear	110mm
刹车	碟刹	Brakes	Disc brake
轮轴	15mm 桶轴	Wheel axle	15mm barrel shaft
版本	肩控 (锥管)	Version	Shoulder control (straight tube)
竖管长度	220mm	Vertical pipe length	220mm
竖管直径	28.6mm-39.8mm	Vertical pipe diameter	28.6mm-39.8mm
上叉管直径	33.9mm	Upper fork tube diameter	33.9mm
下叉管直径	39.9mm	Lower fork tube diameter	39.9mm
材质	铝合金	Material	aluminium alloy
重量	1750g±50g	Weight	1750g±50g





气压避震前叉TF300-32

Pneumatic shock absorber front fork TF300-32



TF300-32-golden
Linear control



TF300-32-golden
Shoulder control

型号	Tf300-32	Model	Tf300-32
尺寸	26 / 27.5 / 29er	Size	26 / 27.5 / 29er
行程	120mm	Journey	120mm
开档	100mm	Open gear	100mm
刹车	碟刹	Brakes	Disc brake
轮轴	9mm 快拆	Wheel axle	9mm quick disassembly
版本	肩控 (锥管)	Version	Shoulder control (straight tube)
竖管长度	220mm	Vertical pipe length	220mm
竖管直径	28.6mm-30mm	Vertical pipe diameter	28.6mm-30mm
上叉管直径	32mm	Upper fork tube diameter	32mm
下叉管直径	38mm	Lower fork tube diameter	38mm
材质	铝合金	Material	aluminium alloy
重量	1805g	Weight	1805g



When shoulder control is reversed, it is locked and when it is opened
Note: The shock absorption function can be adjusted after parking



Red button to open
Small black trigger to lock



Air holes in the upper air chamber can adjust the air pressure according to the individual's body weight



Damping regulator Easily handle all kinds of off-road venues

TANKE

气压避震前叉TF34B快拆

Pneumatic shock absorber front fork TF34B quick release



TF34B-Golden tube

Black

TF34B-Golden tube

Blue

TF34B-Golden tube

Orange

型号	TF34B	Model	TF34B
尺寸	27.5 / 29er	size	27.5/29er
行程	120mm	Journey	120mm
开档	100mm	Open gear	100mm
刹车	碟刹	Brakes	Disc brake
轮轴	9mm 快拆	Wheel axle	9mm quick disassembly
版本	肩控 (直管)	Version	Shoulder control (straight tube)
竖管长度	220mm	Vertical pipe length	220mm
竖管直径	28.6mm-30mm	Vertical pipe diameter	28.6mm-30mm
上叉管直径	34mm	Upper fork tube diameter	34mm
下叉管直径	42mm	Lower fork tube diameter	42mm
材质	铝合金	Material	aluminium alloy
重量	2100g	Weight	2100g



Black tube
Black



Golden tube
Black



Black tube
Blue



Golden tube
Orange

TANKE

气压避震前叉TF34桶轴

Pneumatic shock absorber front fork TF34 barrel shaft



TF300-34-160

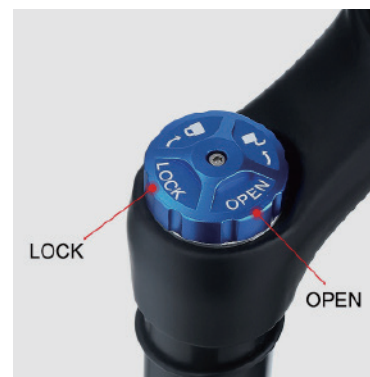
Linear control



TF300-34-160

Shoulder control

型号	TF34	Model	TF34
尺寸	27.5 / 29er	size	27.5/29er
行程	120-180mm	Journey	120-180mm
开档	110mm	Open gear	110mm
刹车	碟刹	Brakes	Disc brake
轮轴	15mm 桶轴	Wheel axle	15mm barrel shaft
版本	肩控 (锥管)	Version	Shoulder control (straight tube)
竖管长度	220mm	Vertical pipe length	220mm
竖管直径	28.6mm-30mm	Vertical pipe diameter	28.6mm-30mm
上叉管直径	33.9mm	Upper fork tube diameter	33.9mm
下叉管直径	39.9mm	Lower fork tube diameter	39.9mm
材质	铝合金	Material	aluminium alloy
重量	2050g	Weight	2050g



TANKE

气压避震前叉TF300-36

Pneumatic shock absorber front fork TF300-36



TF300-36-160

Linear control



TF300-36-160

Shoulder control

型号	TF300-36	Model	TF300-36
尺寸	27.5 / 29er	Size	27.5/29er
行程	160mm	Journey	160mm
开档	110mm	Open gear	110mm
刹车	碟刹	Brakes	Disc brake
轮轴	15mm 桶轴	Wheel axle	15mm barrel shaft
版本	肩控 (锥管)	Version	Shoulder control (straight tube)
竖管长度	220mm	Vertical pipe length	220mm
竖管直径	28.6mm-39.8mm	Vertical pipe diameter	28.6mm-39.8mm
上叉管直径	36mm	Upper fork tube diameter	36mm
下叉管直径	45mm	Lower fork tube diameter	45mm
材质	铝合金	Material	aluminium alloy
重量	2435g	Weight	2435g



TANKE

气压避震前叉TF36

Pneumatic shock absorber front fork TF36



Golden tube
purple

Golden tube
White

Golden tube
Gold

Golden tube
Black

Golden tube
Orange



Black tube
Black

Golden tube
purple

Golden tube
Black

Golden tube
White

型号	TF36
尺寸	27.5 / 29er
行程	160mm
开档	100mm
刹车	碟刹
轮轴	10mm 快拆
版本	肩控 (锥管)
竖管长度	220mm
竖管直径	28.6mm-39.8mm
上叉管直径	36mm
下叉管直径	45mm
材质	铝合金
重量	2435g

Model	TF36
size	27.5/29er
Journey	160mm
Open gear	100mm
Brakes	Disc brake
Wheel axle	10mm quick-release
Version	Shoulder control (straight tube)
Vertical pipe length	220mm
Vertical pipe diameter	28.6mm-39.8mm
Upper fork tube diameter	36mm
Lower fork tube diameter	45mm
Material	aluminium alloy
Weight	2435g

TANKE

气压避震前叉TF36

Pneumatic shock absorber front fork TF36



TF36-Golden tube

Purple



Black tube
Black



Golden tube
Orange



Golden tube
White



Golden tube
Gold

型号	TF36
尺寸	27.5 / 29er
行程	160mm
开档	100mm
刹车	碟刹
轮轴	15mm 桶轴
版本	肩控 (锥管)
竖管长度	220mm
竖管直径	28.6mm-39.8mm
上叉管直径	36mm
下叉管直径	45mm
材质	铝合金
重量	2435g

Model	TF36
Size	27.5/29er
Journey	160mm
Open gear	100mm
Brakes	Disc brake
Wheel axle	15mm barrel shaft
Version	Shoulder control (straight tube)
Vertical pipe length	220mm
Vertical pipe diameter	28.6mm-39.8mm
Upper fork tube diameter	36mm
Lower fork tube diameter	45mm
Material	aluminium alloy
Weight	2435g

TANKE

气压避震双肩前叉TF36桶轴

Pneumatic shock absorber front fork TF32 barrel shaft



TF36-Golden tube
Orange



TF36-Golden tube
Black

型号	TF36	Model	TF36
尺寸	27.5 / 29er	size	27.5/29er
行程	160-180mm	Journey	160-180mm
开档	110mm	Open gear	110mm
刹车	碟刹	Brakes	Disc brake
轮轴	15mm 桶轴	Wheel axle	15mm barrel shaft
版本	肩控 (锥管)	Version	Shoulder control (straight tube)
竖管长度	220mm	Vertical pipe length	220mm
竖管直径	28.6mm-39.8mm	Vertical pipe diameter	28.6mm-39.8mm
上叉管直径	33.9mm	Upper fork tube diameter	33.9mm
下叉管直径	39.9mm	Lower fork tube diameter	39.9mm
材质	铝合金	Material	aluminium alloy
重量	1750g±50g	Weight	1750g±50g





TF300-36 Colorful



TF300-36 Black

TANKE

气压避震前叉TF300-36

Pneumatic shock absorber front fork TF300

型号	TF300
尺寸	27.5 / 29er
行程	160mm
开档	100mm
刹车	碟刹
轮轴	9mm 快拆
版本	肩控 (直管)
竖管长度	220mm
竖管直径	28.6mm-30mm
上叉管直径	32mm
下叉管直径	38mm
材质	铝合金
重量	1960g

Model	TF300
Size	27.5/29er
Journey	160mm
Open gear	100mm
Brakes	Disc brake
Wheel axle	9mm quick disassembly
Version	Shoulder control (straight tube)
Vertical pipe length	220mm
Vertical pipe diameter	28.6mm-30mm
Upper fork tube diameter	32mm
Lower fork tube diameter	38mm
Material	aluminium alloy
Weight	1960g

TANKE

气压避震前叉TF38

Pneumatic shock absorber front fork TF38



TF38
Black

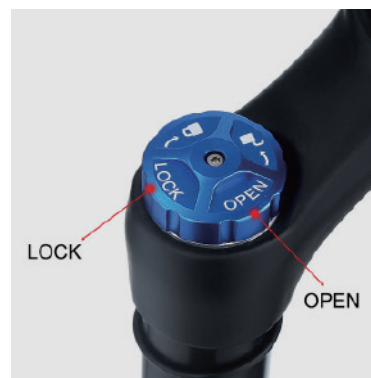


TF38
Black



TF38
Orange

型号	Tf38	Model	Tf38
尺寸	27.5 / 29er	size	27.5/29er
行程	160/180mm	Journey	160/180mm
开档	110mm	Open gear	110mm
刹车	碟刹	Brakes	Disc brake
轮轴	15mm 桶轴	Wheel axle	15mm barrel shaft
版本	肩控 (锥管)	Version	Shoulder control (Cone tube)
竖管长度	220mm	Vertical pipe length	220mm
竖管直径	28.6mm-39.8mm	Vertical pipe diameter	28.6mm-39.8mm
上叉管直径	38mm	Upper fork tube diameter	38mm
下叉管直径	47mm	Lower fork tube diameter	47mm
材质	铝合金	Material	aluminium alloy
重量	2150g	Weight	2150g





TANKE

山地车碳纤维前叉

Mountain Bike Carbon Fiber Fork

型号	TF-11	Model	TF-11
尺寸	27.5 / 29er	size	27.5/29er
开档	110mm	Open gear	110mm
刹车	碟刹	Brakes	Disc brake
轮轴	15mm 桶轴	Wheel axle	15mm barrel shaft
版本	锥管	Version	cone tube
竖管长度	300mm	Vertical pipe length	300mm
竖管直径	28.6mm-30mm	Vertical pipe diameter	28.6mm-30mm
上叉管直径	34mm	Upper fork tube diameter	34mm
下叉管直径	42mm	Lower fork tube diameter	42mm
材质	T800碳纤维	Material	T800 carbon fiber
重量	2100g	Weight	2100g





Bicycle Hubs

自行车花鼓

TANKE

TANKE

TH-390山地车花鼓

TH-390 Mountain Bike Flower Drum



Purple



Colorful



Pink



Black



Red

型号	TH-390
材质	铝合金
用途	山地车
类型	135mm快拆/142桶轴
响数	120响
孔数	28 / 32 / 36孔
条幅	弯曲条幅
轴承	前2 后4
塔基	HG / MS / XD 适合7-12速飞轮
齿密度	6棘爪
刹车	碟刹
轴	100mm/135mm快拆 100mm/142mm桶轴
端盖	9mm/10mm快拆15mm / 12mm 桶轴
重量	快拆:590±10G 桶轴:480±10G

Model	TH-390
Material	aluminium alloy
Purpose	Mountain bike
Type	135mm quick release/142 barrel shaft
Noise count	120 rings
Hole	28 / 32 / 36 holes
Banner	Curved banner
Bearings	Front 2 and back 4
Taki	HG / MS / XD Suitable for 7-12 speed flywheel
Tooth density	6 claws
Brakes	Disc brake
axis	QR 100mm/135mm TA 100mm/142mm
End cap	QR 9mm/10mm TA 15mm/12mm
Weight	QR : 590 ± 10G TA: 480 ± 10G

TANKE

TH-390山地车花鼓

TH-390 Mountain Bike Flower Drum



Golden



Black-pink

Blue-purple

型号	TH-390
材质	铝合金
用途	山地车
类型	135mm快拆/142桶轴
响数	120响
孔数	28 / 32 / 36孔
条幅	弯曲条幅
轴承	前2 后4
塔基	HG / MS / XD 适合7-12速飞轮
齿密度	6棘爪
刹车	碟刹
轴	100mm/135mm快拆 100mm/142mm桶轴
端盖	9mm/10mm快拆 15mm/12mm 桶轴
重量	快拆:590±10G 桶轴:480±10G
Model	TH-390
Material	aluminium alloy
Purpose	Mountain bike
Type	135mm quick release/142 barrel shaft
Noise count	120 rings
Hole	28 / 32 / 36 holes
Banner	Curved banner
Bearings	Front 2 and back 4
Taki	HG / MS / XD Suitable for 7-12 speed flywheel
Tooth density	6 claws
Brakes	Disc brake
axis	QR 100mm/135mm TA 100mm/142mm
End cap	QR 9mm/10mm TA 15mm/12mm
Weight	QR: 590 ± 10G TA: 480 ± 10G

TANKE

TH-490山地车花鼓

TH-490 Mountain Bike Flower Drum



Purple

Colorful



Red

Black

Pink

型号	TH-490
材质	铝合金
用途	山地车 6钉
类型	148 BoOsT桶轴
响数	120响
孔数	32孔(28/36孔需要定制)
条幅	弯曲条幅
轴承	前2后4
塔基	HG / MS / XD 适合7-12速飞轮
齿密度	6棘爪
刹车	6钉碟刹
轴	110mm/148mm桶轴
端盖	15mm / 12mm 桶轴
重量	480±10G

Model	TH-490
Material	aluminium alloy
Purpose	Mountain bike 6 nails
Type	148 BoOsT barrel shaft
Noise count	120 rings
Hole	32 holes (28/36 holes require customization)
Banner	Curved banner
Bearings	Front 2 and back 4
Taki	HG / MS / XD Suitable for 7-12 speed flywheel
Tooth density	6 claws
Brakes	Disc brake
axis	110mm/148mm TA
End cap	15mm/12mm TA
Weight	480 ± 10G

TANKE

TH-500山地车花鼓

TH-500 Mountain Bike Flower Drum



Orange



Black



Pink



Purple



Blue

型号	TH-500
材质	铝合金
用途	单速土坡
类型	对锁单速花鼓
响数	120响
孔数	32孔
条幅	弯曲条幅
轴承	4轴承
塔基	HG单速
齿密度	6棘爪
刹车	六钉碟刹
轴	对锁10*135mm
端盖	10*135mm
重量	408±10G

Model	TH-500
Material	aluminium alloy
Purpose	Single speed soil slope
Type	Lock single speed flower drum
Noise Count	120 rings
Hole	32 holes
Banner	Curved banner
Bearings	4 bearings
Taki	HG single speed
Tooth density	6 claws
Brakes	Six nail disc brake
axis	Lock 10 * 135mm
End cap	10 * 135mm
Weight	408 ± 10G



Purple



Colorful



Black



Red

TANKE

TH-240山地车花鼓

TH-240 Mountain Bike Flower Drum

型号	TH-240
材质	铝合金
用途	山地车
类型	135mm快拆/142桶轴
响数	120响
孔数	32 / 36孔
条幅	弯曲条幅
轴承	前2 后4
塔基	HG / MS / XD 适合7-12速飞轮
齿密度	6棘爪
刹车	碟刹
轴	100mm/135mm快拆 100mm/142mm桶轴
端盖	9mm/10mm快拆15mm /12mm 桶轴
重量	快拆:590±10G 桶轴:480±10G

Model	TH-240
Material	aluminium alloy
Purpose	Mountain bike
Type	135mm quick release/142 barrel shaft
Noise count	120 rings
Hole	32/36 holes
Banner	Curved banner
Bearings	Front 2 and back 4
Taki	HG / MS / XD Suitable for 7-12 speed flywheel
Tooth density	6 claws
Brakes	Disc brake
axis	QR 100mm/135mm TA 100mm/142mm
End Cap	QR 9mm/10mm TA 15mm/12mm
Weight	QR : 590 ± 10G TA: 480 ± 10G

TANKE

TH-240山地车花鼓

TH-240 Mountain Bike Flower Drum



White



Yellow



Blue

型号	TH-240
材质	铝合金
用途	山地车
类型	135mm快拆/142桶轴
响数	120响
孔数	32 / 36孔
条幅	弯曲条幅
轴承	前2 后4
塔基	HG / MS / XD 适合7-12速飞轮
齿密度	6棘爪
刹车	碟刹
轴	100mm/135mm快拆 100mm/142mm桶轴
端盖	9mm/10mm快拆15mm /12mm 桶轴
重量	快拆:590±10G 桶轴:480±10G

Model	TH-240
Material	aluminium alloy
Purpose	Mountain bike
Type	135mm quick release/142 barrel shaft
Noise count	120 rings
Hole	32/36 holes
Banner	Curved banner
Bearings	Front 2 and back 4
Taki	HG / MS / XD Suitable for 7-12 speed flywheel
Tooth density	6 claws
Brakes	Disc brake
axis	QR 100mm/135mm TA 100mm/142mm
End cap	QR 9mm/10mm TA 15mm/12mm
Weight	QR : 590 ± 10G TA: 480 ± 10G

TANKE

TH-31山地车花鼓

TH-31 Mountain Bike Flower Drum



Colorful



Red

Black

型号	TH-31
材质	铝合金
用途	山地车 6钉
类型	135快拆 / 142桶轴
响数	108响
孔数	32 / 36孔
条幅	弯曲条幅
轴承	前2 后4
塔基	HG / MS / XD 适合7-12速飞轮
齿密度	6棘爪
刹车	碟刹
轴	100mm/135mm快拆 100mm/142mm桶轴
端盖	9mm/10mm快拆 15mm/12mm 桶轴
重量	快拆:590±10G 桶轴:480±10G

Model	TH-31
Material	aluminium alloy
Purpose	Mountain bike 6 nails
Type	135 QR / 142 TA
Noise count	108 rings
Hole	32/36 holes
Banner	Curved banner
Bearings	Front 2 and back 4
Taki	HG/MS/XD suitable for 7-12 speed flywheel
Tooth density	6 claws
Brakes	Disc brake
axis	QR 100mm/135mm TA 100mm/142mm
End cap	QR 9mm/10mm TA 15mm/12mm
Weight	QR:590±10G TA:480±10G

TANKE

TH-498山地车花鼓

TH-498 Mountain Bike Flower Drum



Purple



Red



Colorful



Black

型号	TH-498
材质	铝合金
用途	山地车 6钉
类型	148 BoOsT桶轴
响数	120响
孔数	32孔(28/36孔需要定制)
条幅	弯曲条幅
轴承	前2 后4
塔基	HG / MS / XD 适合7-12速飞轮
齿密度	6棘爪
刹车	6钉 碟刹
轴	110mm/148mm桶轴
端盖	15mm /12mm 桶轴
重量	480±10G

Model	TH-498
Material	aluminium alloy
Purpose	Mountain bike 6 nails
Type	148 BoOsT barrel shaft
Noise count	120 rings
Hole	32 holes (28/36 holes require customization)
Banner	Curved banner
Bearings	Front 2 and back 4
Taki	HG/MS/XD Suitable for 7-12 speed flywheel
Tooth density	6 claws
Brakes	Disc brake
axis	110mm/148mm TA
End cap	15mm/12mm TA
Weight	480 ± 10G



TH-30山地车花鼓

TH-30 Mountain Bike Flower Drum

型号	TH-30
材质	铝合金
用途	公路自行车
类型	100桶轴 / 142桶轴
响数	72 响
孔数	24 孔
条幅	直条幅
轴承	前2 后4
塔基	HG 适合8-12速飞轮
齿密度	6棘爪
刹车	碟刹
轴	100mm/142mm桶轴
端盖	12mm 桶轴
重量	382±10G

Model	TH-30
Material	aluminium alloy
Purpose	Road bicycles
Type	100 TA/142 TA
Noise CoUnt	72 rings
Hole	24 holes
Banner	Straight banner
Bearings	Front 2 and back 4
Taki	HG is suitable for 8-12 speed flywheels
Tooth density	6 claws
Brakes	Disc brake
axis	100mm/142mm barrel shaft
End cap	12mm barrel shaft
Weight	382 ± 10G



TH-32山地车花鼓

TH-32 Mountain Bike Flower Drum

型号	TH-32
材质	铝合金
用途	公路自行车
类型	100快拆 / 130快拆
响数	72 响
孔数	24 孔
条幅	直条幅
轴承	前2 后4
塔基	HG 适合8-12速飞轮
齿密度	6棘爪
刹车	碟刹
轴	100mm/142mm快拆
端盖	12mm 快拆
重量	345±10G

Model	TH-32
Material	aluminium alloy
Purpose	Road bicycles
Type	100 QR/130 QR
Noise coUnt	72 rings
Hole	24 holes
Banner	Straight banner
Bearings	Front 2 and back 4
Taki	HG is suitable for 8-12 speed flywheels
Tooth density	6 claws
Brakes	Disc brake
axis	100mm/142mm quick disassembly
End cap	12mm quick disassembly
Weight	345 ± 10G

Bicycle wheel set
自行车轮组



TANKE

公路自行车轮组700c

碳纤维轮辋 铝合金花鼓

Road bicycle wheel set

型号	700c
轮辋材料	碳纤维
轮辋高度	50mm/28mm
花鼓	72响6爪 培林前2后4
孔数	前20后24 / 前24后24
轴承	135mm快拆 / 142mm桶轴
速度	8-11速
适合车型	圈刹/碟刹公路车
适合轮胎	管胎/开口轮胎

Model	700c
Rim material	carbon fibre
Rim height	50mm/28mm
Flower drum	72 rings, 6 claws, F 2, B 4
Number of holes	F 20 and B 24 / F 24 and B 24
Bearing	135mm QR / 142mm TA
Speed	8-11 speed
Bicycle type	Circle brake/disc brake road vehicle
Applicable tires	Tube tire/open tire



01 C-BRAKE WHEEL SET



02 SIX-PIN DISC BRAKE BRAKES WHEEL SET



03 C-BRAKE WHEEL SET



04 MIDDLE LOCK DISC BRAKE WHEEL SET

TANKE

公路自行车轮组700c

碳纤维轮辋 铝合金花鼓

Road bicycle wheel set



型号	700c
轮辋材料	碳纤维
轮辋高度	50mm/28mm
花鼓	行星棘轮花鼓
孔数	前20后24 / 前24后24
轴承	142mm桶轴
速度	8-12速
适合车型	碟刹公路车
适合轮胎	开口轮胎

Model	700c
Rim material	carbon fibre
Rim height	50mm/28mm
Flower drum	Planetary Ratchet Hub
Number of holes	F 20 and B 24 / F 24 and B 24
Bearing	142mm TA
Speed	8-12 speed
Bicycle type	disc brake road vehicle
Applicable tires	open tire



TANKE

山地车轮组MTX39

铝合金轮圈 铝合金花鼓

Road bicycle wheel set

型号	MtX39
轮圈材料	铝合金
轮圈尺寸	26-27.5
花鼓	120响6爪 培林前2后4
孔数	前20后24 / 前24后24
轴承	135mm桶轴
速度	单速
适合车型	碟刹山地车
适合轮胎	管胎/开口轮胎

Model	MtX39
Rim material	Aluminum alloy
Rim size	26-27.5
Flower drum	120 rings, 6 claws, F 2, B 4
Number of holes	F 20 and B 24 / F 24 and B 24
Bearing	135mm QR
Speed	Single Speed
Bicycle type	Disc Brake MTB
Applicable tires	Tube tire/Open tire

TANKE

竞赛级山地车轮组M1800

碳纤维轮圈 铝合金花鼓

Road bicycle wheel set



型号	M1800
轮圈材料	碳纤维
轮圈高度	50mm/28mm
花鼓	72响6爪 培林前2后4
孔数	前20后24 / 前24后24
轴承	135mm快拆 / 142mm桶轴
速度	7-12速
适合车型	圈刹/碟刹公路车
适合轮胎	管胎/开口轮胎

Model	M1800
Rim material	carbon fibre
Rim height	50mm/28mm
Flower drum	72 rings, 6 claws, F 2, B 4
Number of holes	F 20 and B 24 / F 24 and B 24
Bearing	135mm QR / 142mm TA
Speed	7-12 speed
Bicycle type	Circle brake/disc brake road vehicle
Applicable tires	Tube tire/Open tire



Red hub
Colorful spokes



Purple hub
Colorful spokes



Colorful hub
Black spokes



Black hub
Black spokes



山地车越野轮组511

铝合金轮辋 铝合金花鼓

Road bicycle wheel set

型号	511
轮辋材料	铝合金
轮辋尺寸	26-27.5-29
花鼓	72响6爪 培林前2后4
孔数	前20后24 / 前24后24
轴承	135mm快拆
速度	7-12速
适合车型	圈刹/碟刹公路车
适合轮胎	管胎/开口轮胎

Model	511
Rim material	Aluminum alloy
Rim size	26-27.5-29
Flower drum	72 rings, 6 claws, F 2, B 4
Number of holes	F 20 and B 24 / F 24 and B 24
Bearing	135mm QR
Speed	7-12 speed
Bicycle type	Circle brake/disc brake road vehicle
Applicable tires	Tube tire/open tire



Purple



Black



Pink

TANKE

山地车轮组MTX33

铝合金轮辋 铝合金花鼓

Road bicycle wheel set

型号	MTX33
轮辋材料	铝合金
轮辋尺寸	26-27.5-29
花鼓	120响6爪 培林前2后4
孔数	前20后24 / 前24后24
轴承	135mm快拆
速度	8-12速
适合车型	圈刹/碟刹公路车
适合轮胎	管胎/开口轮胎

Model	MTX33
Rim material	Aluminum alloy
Rim size	26-27.5-29
Flower drum	120 rings, 6 claws, F 2, B 4
Number of holes	F 20 and B 24 / F 24 and B 24
Bearing	135mm QR
Speed	8-12 speed
Bicycle type	Circle brake/disc brake road vehicle
Applicable tires	Tube tire/Open tire



Black



Purple



山地车拉链器

Mountain bike zipper

型号	TANKE
材质	铝合金
适用	山地自行车/折叠自行车
款式	眼拔
安装	车架需要有后拨尾勾
重量	115g

Model	TANKE
Material quality	Aluminium alloy
Apply	Mountain bike/folding bike
Atyie	Eye extraction
Install	The frame needs to have a rear tailhook
Weight	115g



TANKE

山地车拉链器

Mountain bike zipper

型号	TANKE
材质	铝合金
适用	山地自行车/折叠自行车
款式	拉链器
安装	车架需要有后拨尾勾
重量	198g

Model	TANKE
Material quality	Aluminium alloy
Apply	Mountain bike/folding bike
Atyie	Zipper Puler
Install	The frame needs to have a rear tailhook
Weight	198g

TANKE

自行车单速飞轮

Bicycle single speed flywheel

型号	TANkN
材质	铝合金
飞轮规格	18T
飞轮尺寸	78.3mm
套装重量	68g

Model	TANkE
Material quality	aluminium alloy
Specifications	18T
Flywheel size	78.3mm
Set weight	68g

自行车单速飞轮

Bicycle single speed flywheel

型号	TANkN
材质	铝合金
飞轮规格	16T
飞轮尺寸	78.3mm
套装重量	68g

Model	TANkE
Material quality	aluminium alloy
Specifications	16T
Flywheel size	78.3mm
Set weight	68g

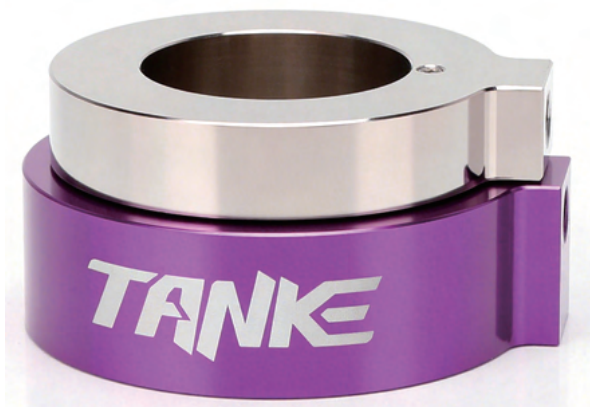
自行车单速飞轮

Bicycle single speed flywheel

型号	TANkN
材质	铝合金
飞轮规格	15T
飞轮尺寸	78.3mm
套装重量	68g

Model	TANkE
Material quality	aluminium alloy
Specifications	15T
Flywheel size	78.3mm
Set weight	68g



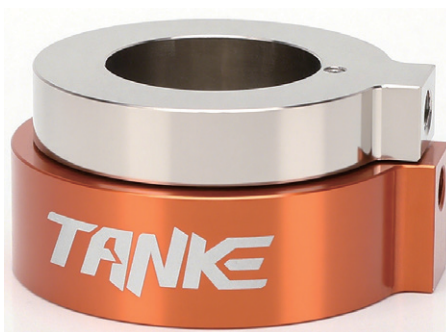
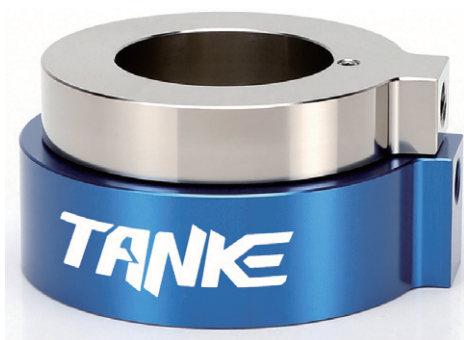
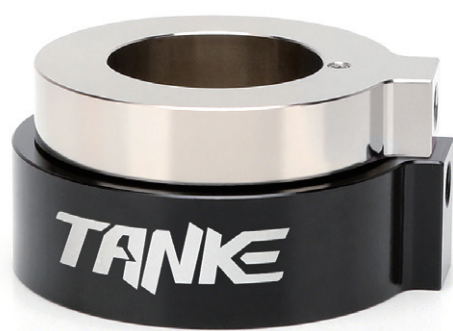


车头旋转万向油

Universal Oil for Bicycle Head Rotation

型号	TANkN
材质	铝合金
规格	360°随意转动
尺寸	58*28mm
套装重量	119g

Model	TANKE
Material quality	aluminium alloy
Specifications	360° free rotation
size	58*28mm
Set weight	119g





TANKE

弹簧后避震器

Spring Rear Shock Absorber

型号	TANKN
材质	高强度材料
规格	550LBs
尺寸	12*190/12*210/12*230/12*240/12*210/12*265mm
行程	50/55/65/70/75/80mm

Model	TANKE
Material quality	High-strength material
Specifications	550LBs
size	12*190/12*210/12*230/12*240/12*210/12*265mm
stroke	50/55/65/70/75/80mm

Bicycle brake system

自行车刹车系统

TANKE

TANKE

铝合金油刹TB310

Bicycle oil brake TB310

断电款 Power off version



型号	TB-310 (液压盘式制动器)
材质	铝合金
用途	助力自行车、电动滑板车
直径	22.2mm 手柄
刹车油	矿物油
重量	前272g 后283g
适合碟片	160mm (180/203需转换座)
长度	前刹890mm, 后刹1570mm
断电开关	磁感应信号低电平常开型
Model	TB-310 (Hydraulic Disc Brake)
Material quality	aluminium alloy
Purpose	Power assisted bicycles and electric scooters
Diameter	22.2mm handle
Brake fluid	mineral oil
Weight	272g before and 283g after
Suitable for discs	160mm (180/203 requires conversion seat)
Length	Front brake 890mm, rear brake 1570mm
Power off switch	Magnetic induction signal low electric normal open type





TANKE

自行车油刹TB530

Bicycle oil brake TB530

断电款 Power off version

型号	Tb530
材质	铝合金
用途	山地/公路自行车
直径	22.2mm 手柄
刹车油	矿物油
重量	前376g 后356g
适合碟片	160mm (180/203需转换座)
长度	前刹900mm, 后刹1850mm
断电开关	磁感应信号低电平常开型

Model	Tb530
Material quality	aluminium alloy
Purpose	Mountain/Road Bike
Diameter	22.2mm handle
Brake fluid	mineral oil
Weight	Front 376g , Back 356g
Suitable for discs	160mm(180/203 requires conversion seat)
Length	Front 900mm, Back 1870mm
Power off switch	Magnetic induction signal low electric normal open type

自行车油刹TB500

Bicycle oil brake TB500

型号	Tb-500
材质	铝合金
用途	山地/公路自行车
直径	22.2mm 手柄
刹车油	矿物油
重量	前352g 后332g
适合碟片	160mm (180/203需转换座)
长度	前刹800mm, 后刹1600mm
断电开关	磁感应信号低电平常开型

Model	Tb-500
Material quality	aluminium alloy
Purpose	Mountain/Road Bike
Diameter	22.2mm handle
Brake fluid	mineral oil
Weight	Front 352g , Back 332g
Suitable for discs	160mm(180/203 requires conversion seat)
Length	Front 800mm, Back 1600mm
Power off switch	Magnetic induction signal low electric normal open type





TANKE

自行车油刹TB200

Bicycle oil brake TB200

型号	TB-200 (液压盘式制动器)
材质	铝合金
用途	山地自行车
直径	22.2mm 手柄
刹车油	矿物油
重量	前268g 后284g
适合碟片	160mm (180/203需转换座)
长度	前刹800mm, 后刹1450mm

Model	TB-200 (Hydraulic Disc Brake)
Material quality	aluminium alloy
Purpose	Mountain cycling
Diameter	22.2mm handle
Brake fluid	mineral oil
Weight	268g before and 284g after
Suitable for discs	160mm (180/203 requires conversion seat)
Length	Front brake 800mm, rear brake 1450mm

自行车油刹TB450

Bicycle oil brake TB450

型号	TB-450 (液压盘式制动器)
材质	铝合金
用途	山地自行车
直径	22.2mm 手柄
刹车油	矿物油
重量	前263g 后283g
适合碟片	160mm (180/203需转换座)
长度	前刹800mm, 后刹1450mm

Model	TB-200 (Hydraulic Disc Brake)
Material quality	aluminium alloy
Purpose	Mountain cycling
Diameter	22.2mm handle
Brake fluid	mineral oil
Weight	263g before and 283g after
Suitable for discs	160mm (180/203 requires conversion seat)
Length	Front brake 800mm, rear brake 1450mm





TANKE

铝合金油刹TB300

Bicycle oil brake TB300

型号	TB-300 (液压盘式制动器)
材质	铝合金
用途	山地自行车
直径	22.2mm 手柄
刹车油	矿物油
重量	前268g 后284g
适合碟片	160mm (180/203需转换座)
长度	前刹800mm, 后刹1450mm

Model	TB-300 (Hydraulic Disc Brake)
Material quality	aluminium alloy
Purpose	Mountain cycling
Diameter	22.2mm handle
Brake fluid	mineral oil
Weight	268g before and 284g after
Suitable for discs	160mm (180/203 requires conversion seat)
Length	Front brake 800mm, rear brake 1450mm



TANKE

四活塞油刹TB650

Four-piston hydraulic brake TB650



型号	TB-650 (液压盘式制动器)
材质	铝合金
用途	山地自行车
直径	9cm 手柄
刹车油	矿物油
重量	前333g 后367g
适合碟片	1.8*160mm (180/203需转换座、2.3mm需要更换来令片)
长度	前刹850mm, 后刹1700mm

Model	TB-650 (Hydraulic Disc Brake)
Material quality	aluminium alloy
Purpose	Mountain cycling
Diameter	9cm handle
Brake fluid	mineral oil
Weight	333g before and 367g after
Suitable for discs	1.8160mm (180/203 requires conversion seat. Replace the brake pads when the thickness reaches 2.3mm)
Length	Front brake 850mm, rear brake 1700mm



TANKE

自行车油刹TB700

Bicycle oil brake TB700

断电款 Power off version



型号	TB700
材质	铝合金
用途	电动自行车
直径	22.2mm 手柄
刹车油	矿物油
重量	前300g 后300g
适合碟片	160mm (180/203需转换座)
长度	2300mm
断电开关	磁感应信号低电平常开型

Model	TB700
Material quality	aluminium alloy
Purpose	E-Brake
Diameter	22.2mm handle
Brake fluid	mineral oil
Weight	Front 300g and back 300g
Suitable for discs	160mm (180/203 requires conversion seat)
Length	2300mm
Power off switch	Magnetic induction signal low electric normal open type

自行车油刹TB730

Bicycle oil brake TB730

型号	TB-730
材质	铝合金
用途	山地自行车
直径	22.2mm 手柄
刹车油	矿物油
重量	628g
适合碟片	160mm (180/203需转换座)
长度	前刹900mm, 后刹1700mm

Model	TB-730
Material quality	aluminium alloy
Purpose	Mountain cycling
Diameter	22.2mm handle
Brake fluid	mineral oil
Weight	628g
Suitable for discs	160mm (180/203 requires conversion seat)
Length	Front brake 900mm, rear brake 1700mm





自行车油刹MT200

Bicycle oil brake Mt200

型号	Mt-200
材质	铝合金
用途	山地自行车
直径	22.2mm 手柄
刹车油	矿物油
重量	前268g 后284g
适合碟片	160mm (180/203需转换座)
长度	前刹800mm, 后刹1450mm

Model	Mt-200
Material quality	Aluminium alloy
Purpose	Mountain cycling
Diameter	22.2mm handle
Brake fluid	mineral oil
Weight	Front 268g , Back 284g
Suitable for discs	160mm(180/203 requires conversion seat)
Length	Front 800mm, Back 1450mm

自行车油刹TB800

Bicycle oil brake Tb800

型号	Tb-800
材质	铝合金
用途	山地自行车
直径	22.2mm 手柄
刹车油	矿物油
重量	前244g 后262g
适合碟片	160mm (180/203需转换座)
长度	前刹900mm, 后刹1700mm

Model	Tb-800
Material quality	aluminium alloy
Purpose	Mountain cycling
Diameter	22.2mm handle
Brake fluid	mineral oil
Weight	244g before and 262g after
Suitable for discs	160mm (180/203 requires conversion seat)
Length	Front brake 900mm, rear brake 1700mm



TANKE

铝合金油刹TB600

Bicycle oil brake TB600



型号	TB-600 (液压盘式制动器)
材质	铝合金
用途	山地自行车
直径	22.2mm 手柄
刹车油	矿物油
重量	前295g 后315g
适合碟片	160mm (180/203需转换座)
长度	前刹800mm, 后刹1600mm

Model	TB-600 (Hydraulic Disc Brake)
Material quality	aluminium alloy
Purpose	Mountain cycling
Diameter	22.2mm handle
Brake fluid	mineral oil
Weight	295g before and 315g after
Suitable for discs	160mm (180/203 requires conversion seat)
Length	Front brake 800mm, rear brake 1600mm



TANKE

四活塞断电油刹

Bicycle oil brake TB610

断电款 Power off version



型号	TB-610 (液压盘式制动器)
材质	铝合金
用途	山地自行车
直径	22.2mm 手柄
刹车油	矿物油
重量	前308g 后308g
适合碟片	160mm (180/203需转换座)
长度	前刹2300mm, 后刹2300mm

Model	TB-610 (Hydraulic Disc Brake)
Material quality	aluminium alloy
Purpose	Mountain cycling
Diameter	22.2mm handle
Brake fluid	mineral oil
Weight	Front 308g and back 308g
Suitable for discs	160mm (180/203 requires conversion seat)
Length	Front brake 2300mm, rear brake 2300mm





Bicycle pedal
自行车脚踏板



TANKE

轻量型脚踏TP-10

Lightweight foot pedal TP-10

型号	TP-10	Model	TP-10
材质	尼龙	Material quality	Nylon
用途	山地车/公路车		Mountain bikes/road bikes
重量	280g/一对	Weight	280g/pair
尺寸	105*81.5*80.5mm	Size	105*81.5*80.5mm



轻量型脚踏TP-20

Lightweight foot pedal TP-20

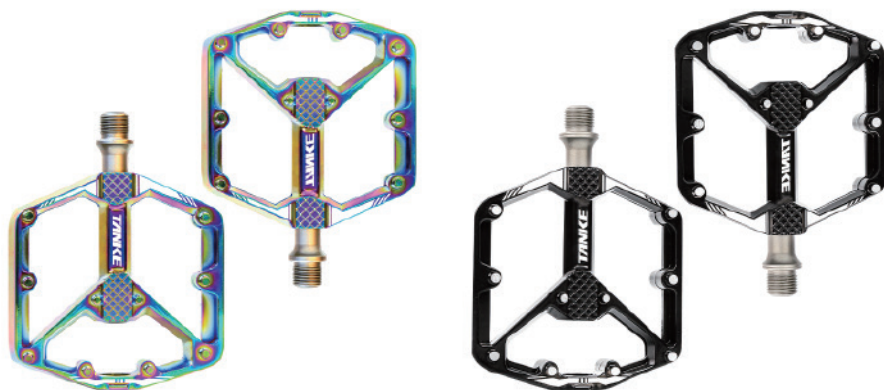
型号	TP-20	Model	TP-20
材质	铝合金	Material quality	aluminium alloy
用途	山地车/公路车	Purpose	Mountain bikes/road bikes
重量	350.5g/一对	Weight	350.5g/pair
尺寸	98*93*17mm	Size	98 * 93 * 17mm

TANKE

轻量型脚踏TP-40

Lightweight foot pedal TP-40

型号	TP-40	Model	TP-40
材质	铝合金	Material quality	aluminium alloy
用途	山地车/公路车	Purpose	Mountain bikes/road bikes
重量	380g/一对	Weight	380g/pair
尺寸	98*126*17mm	Size	98*126*17mm



轻量型脚踏TP-50

Lightweight foot pedal TP-50

型号	TP-50	Model	TP-50
材质	铝合金	Material quality	aluminium alloy
用途	山地车/公路车	Purpose	Mountain bikes/road bikes
重量	323.3g/一对	Weight	323.3g/pair
尺寸	106*122mm	Size	106*122mm





自行车锁踏TP-65

Bicycle Lock Tread TP-65

型号	TP-65	Model	TP-65
材质	铝合金+铬钼钢	Material quality	Aluminum alloy+Cr-Mo
用途	山地车/公路车	Purpose	Mountain bikes/road bikes
重量	396g/一对	Weight	396g/pair
尺寸	90*100mm	Size	90*100mm
轴承	DU培林+密封轴承	Bearing	DU Peilin+sealed bearings

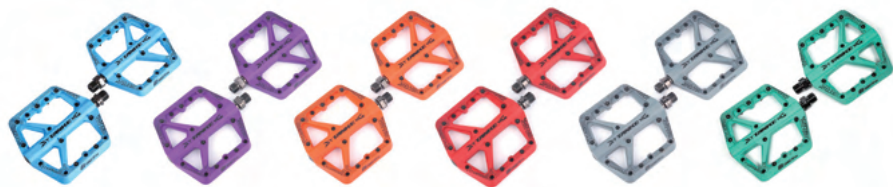
- | | |
|----------------------|--|
| 1. 密封轴承，防水防尘 | 1. sealed bearings, waterproof and dustproof |
| 2. 铝合金、铬钼钢轴、普通螺纹 | 2. Aluminum alloy, Luomo steel shaft, ordinary thread |
| 3. 加宽胎面更省力 | 3. Widening the tread saves more effort |
| 4. 锁踏板运用，SPD系统提高骑行效率 | 4. Lock pedal is suitable, SPD system improves cycling efficiency |
| 5. 不锈钢材质，防滑钉，抓脚不滑 | 5. stainless steel material, anti slip nails, non slip grip for feet |



自行车锁踏TP-66

Bicycle Lock Tread TP-66

型号	TP-66	Model	TP-66
材质	尼龙碳纤维+铬钼钢	Material quality	Nylon carbon fiber+Cr-Mo
用途	山地车/公路车	Purpose	Mountain bikes/road bikes
重量	295g/一对	Weight	295g/pair
尺寸	83*75mm	Size	83*75mm



TANKE

轻量型脚踏TP-60

Lightweight foot pedal TP-60

型号	TP-60	Model	TP-60
材质	尼龙	Material quality	Nylon
用途	山地车/公路车	Purpose	Mountain bikes/road bikes
重量	366.2g/一对	Weight	366.2g/pair
尺寸	115*132*19mm	Size	115*132*19mm



轻量型锁踏TP-70

Lightweight lock step TP-70

型号	TP-70	Model	TP-70
材质	铝合金+铬钼钢	Material quality	aluminium alloy + Cr-Mo
用途	山地车/公路车	Purpose	Mountain bikes/road bikes
重量	283g/一对	Weight	283g/pair
尺寸	90*100mm	Size	90*100mm

Bicycle transmission system

自行车曲柄、牙盘、中轴、链条



TANKE

中空曲柄Fc4000

Hollow crank FC4000

型号	Fc4000
材质	铝合金
长度	170mm
周外径	24mm
BcD	104mm
兼容	8/9/10/11/12/13速
重量	787g

model	Fc4000
material quality	Aluminium alloy
length	170mm
Peripheral outer diameter	24mm
BcD	104mm
compatible	8/9/10/11/12/13 Fast
Weight	787g



GxP曲柄Fc7000

GxP crank Fc7000

型号	Fc7000
材质	铝合金
适用车型	山地车
长度	170mm
链条规格	32T/34T/36T/38T
速度	7/8/9/10/11/12/13s
重量	668g

model	Fc7000
material quality	aluminium alloy
Vehicle model	Mountain bike
length	170mm
specifications	32T/34T/36T/38T
speed	7/8/9/10/11/12/13s
weight	668g



TANKE

方孔曲柄Fc430

Hollow crank FC430

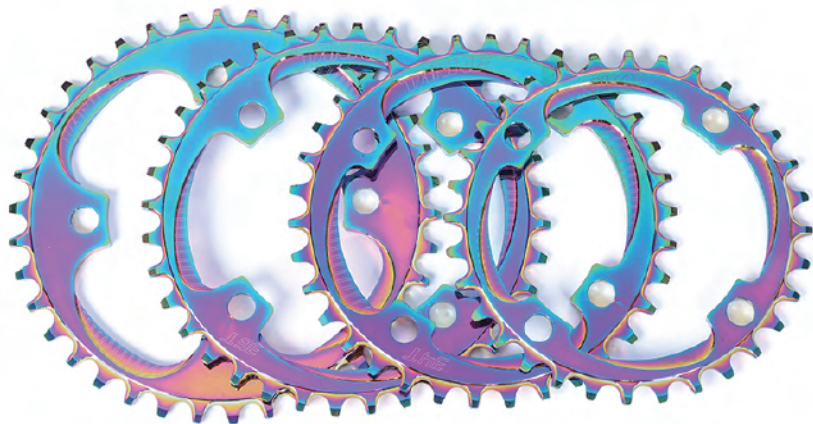
型号	Fc430	model	Fc430
材质	铝合金	material quality	aluminium alloy
适用车型	山地车	Vehicle model	Mountain bike
长度	170mm	length	170mm
兼容	单链轮	compatible	Single chain wheel
适用	30T-48T圆盘	apply	30T-48T Disc
应用	8/9/10/11/12/s	application	8/9/10/11/12/s
重量	左276g / 右321g	weight	Left 276g/Right 321g



铝合金牙盘TC995

Aluminum alloy dental disc TC995

型号	Tc995	Model	Tc995
材质	铝合金	Material quality	Aluminum alloy
长度	134 / 143.6 / 151 / 156.2	Length	134 / 143.6 / 151 / 156.2
齿数	32/34/36/38/40/42/44	Number of teeth	32/34/36/38/40/42/44
直径	104mm	Diameter	104mm
兼容性	8-11速链条	Compatibility	8-11Speed chain
重量	43.2g / 54.1g / 58.6g / 74.9g	Weight	43.2g / 54.1g / 58.6g / 74.9g



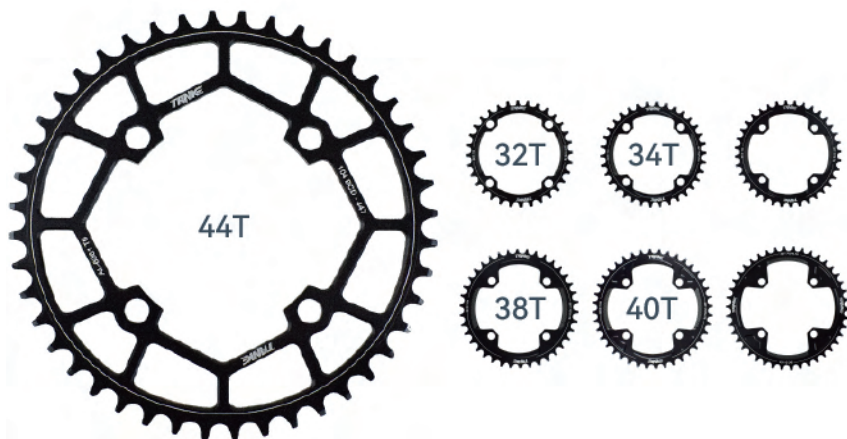
TANKE

铝合金牙盘TC996

Aluminum alloy dental disc TC996

型号	Tc996
材质	铝合金
长度	134 / 143.6 / 151 / 156.2
齿数	32 / 34 / 36 / 38
直径	104mm
兼容性	8-11速链条
重量	43.2g / 54.1g / 58.6g / 74.9g

Model	Tc996
Material quality	Aluminum alloy
Length	134 / 143.6 / 151 / 156.2
Number of teeth	32 / 34 / 36 / 38
Diameter	104mm
Compatibility	8-11speed chain
Weight	43.2g / 54.1g / 58.6g / 74.9g



铝合金牙盘TC995

Aluminum alloy dental disc TC995

型号	Tc995
材质	铝合金
长度	134 / 143.6 / 151 / 156.2
齿数	32/34/36/38/40/42/44
直径	104mm
兼容性	8-11速链条
重量	43.2g / 54.1g / 58.6g / 74.9g

Model	Tc995
Material quality	Aluminum alloy
Length	134 / 143.6 / 151 / 156.2
Number of teeth	32/34/36/38/40/42/44
Diameter	104mm
Compatibility	8-11speed chain
Weight	43.2g / 54.1g / 58.6g / 74.9g



TANKE

铝合金牙盘TC997

Aluminum alloy dental disc TC997

型号	Tc997
材质	铝合金
齿数	30 / 32 / 34
直径	104mm
兼容性	8-11速链条
重量	29.3g, 45g

model	Tc997
material quality	aluminium alloy
Number of teeth	30/32/34
diameter	104mm
compatibility	8-11 speed chain
weight	29.3g, 45g



铝合金中轴BB68

Aluminum alloy center shaft BB68

型号	Bb68
材质	铝合金
轴承	钢制轴承
适用车架中轴	68-73mm
直径	24mm
重量	102g (含变径套)

Model	Bb68
Material quality	aluminium alloy
Bearing	Steel bearings
Axis	68-73mm
Diameter	24mm
Weight	102g (Including variable diameter)



TANKE自行车链条

TANKE bicycle chain

品牌	TANKE
材质	合金钢

brand	TANKE
manufacturer	Alloy steel



炫彩色(镂空)
Colorful (hollow out)

金色(镂空)
golden (hollow out)

棕色
Colorful

银色(镂空)
Silvery (hollow out)

S8

颜色:棕色, 炫彩色
规格:1/2"*3/32"字
节数:116L
速度:8s
应用:7速8速/公路/山地车/旅行车
重量:319.3g±2G

Color: Brown, Colorful
Specification: 1/2 " * 3/32" characters
Section: 116L
Speed: 8s
Application: 7-8 speed/road/mountain bike/
station wagon
Weight: 319.3g±2G

S9

颜色:银色
规格:1/2"*11/128"
节数:116L
速度:9s
应用:9速/公路/山地自行车/旅行车
重量:300.5g±2G

Color: Silvery
Specification: 1/2 " * 11/128"
Section: 116L
Speed: 9s
Application: 9 speed/road/mountain bike/
station wagon
Weight: 300.5g ± 2G

S10

颜色:银色, 炫彩色镂空
规格:1/2"*11/128"
节数:116L
速度:10s
应用:10速/公路/山地自行车/旅行车
重量:282.5g±2G/273.8g±2G

Color: Silver , Colorful hollow out
Specification: 1/2 " * 11/128"
Section: 116L
Speed: 10s
Application: 10 speed/road/mountain bike/
station wagon
Weight: 282.5g±2G/273.8g±2G

S11

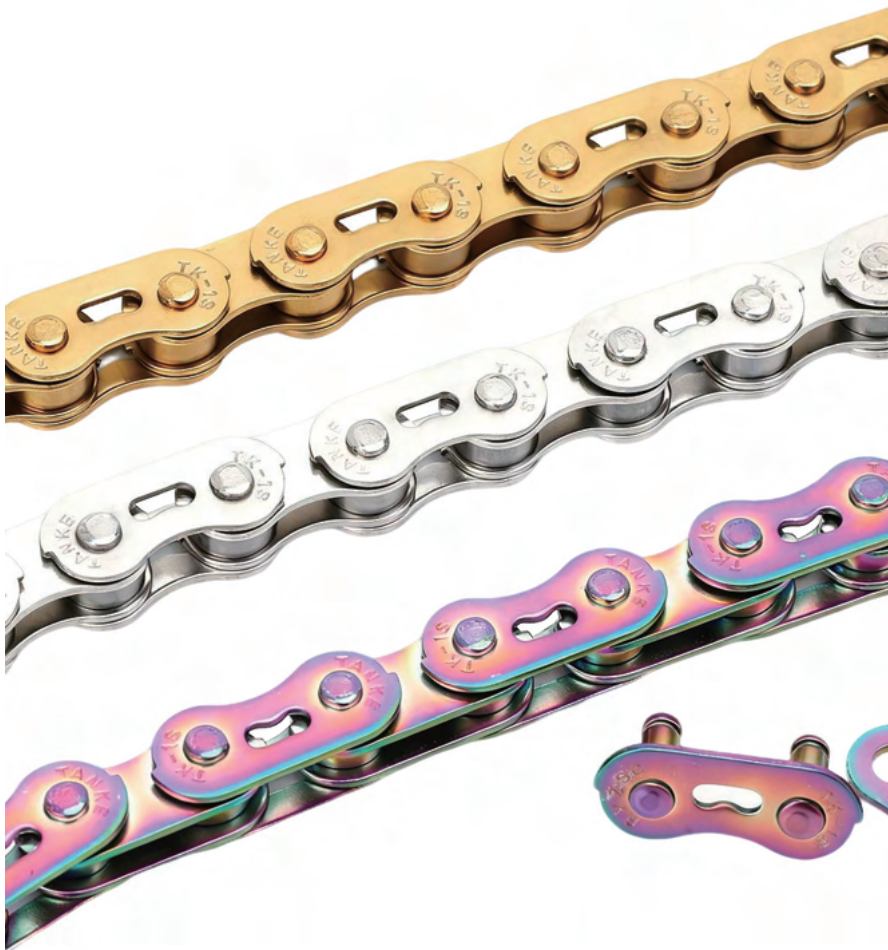
颜色:炫彩色镂空、金色
规格:1/2"*11/128"
节数:120L
速度:11s
应用:11速/公路/山地自行车/旅行车
重量:280g±2g

Color: Colorful hollow out, gold
Specification: 1/2 " * 11/128"
Section number: 120L
Speed: 11s
Application: 11speed/highway/mountain bike/
station wagon
Weight: 280g±2g

S12

颜色:银色, 炫彩色, 炫彩色镂空、金色
节数:126L
速度:12s
应用:12速/公路/山地自行车/旅行车
重量:258.9g±2G/266.9±2G*

Colors: Silver, Colorful, Colorful hollow out, Gold
Section count: 126L
Speed: 12 s
Application: 12 speed/highway/mountain bike/
station wagon
Weight: 258.9g±2G/266.9±2G*



TANKE

TANKE自行车链条

TANKE bicycle chain

品牌 TANKE
材质 合金钢

brand TANKE
manufacturer Alloy steel

单速

颜色:银色、炫彩色、金色

节数:126L

速度:1s

应用:1速/公路/山地自行车/旅行车

重量:258.9g+2G/266.9+2G*

Colors: Silver, Colorful, Gold

Section count: 126L

Speed: 1 s

Application: 1 speed/highway/mountain bike/
station wagon

Weight: 258.9g+2G/266.9+2G*

Bicycle stem、handlebar
自行车把立、车把

TANKE

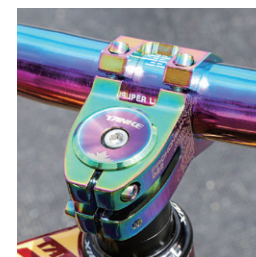
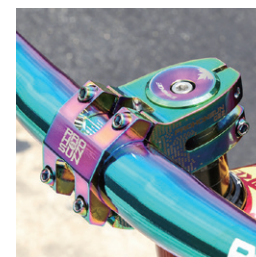
铝合金把立022

Aluminum alloy stems 022



型号	022
材质	铝合金
长度	45mm
角度	0°
前叉安装高度	30mm
适合前叉	28.6mm
适合车把	31.8mm/25.4mm
适合车型	Xc / AM / Enduro
重量	132.9g

Model	022
Material quality	Aluminum alloy
Length	45mm
Angle	0°
Installation height	30mm
Front fork	28.6mm
Handlebar	31.8mm/25.4mm
Vehicle model	Xc / AM / Enduro
Weight	132.9g





037A-70



037A-90



铝合金把立037A

Aluminum alloy stems 037A

型号	037A
材质	铝合金
长度	70-90mm
角度	0°
前叉安装高度	30mm
适合前叉	28.6mm
适合车把	31.8mm/25.4mm
适合车型	Xc / AM / Enduro
重量	200g

Model	037A
Material quality	Aluminum alloy
Length	70-90mm
Angle	0°
Installation height	30mm
Front fork	28.6mm
Handlebar	31.8mm/25.4mm
Vehicle model	Xc / AM / Enduro
Weight	200g





555-70



555-90

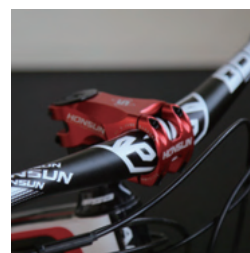
TANKE

铝合金把立555

Aluminum alloy stems 055

型号	555
材质	铝合金
长度	70-90mm
角度	-17°
前叉安装高度	32mm
适合前叉	28.6mm
适合车把	31.8mm-35mm
适合车型	Xc / AM / Enduro
重量	190g

Model	555
Material quality	Aluminum alloy
Length	70-90mm
Angle	-17°
Installation height	32mm
Front fork	28.6mm
Handlebar	31.8mm-35mm
Vehicle model	Xc / AM / Enduro
Weight	190g



TANKE

铝合金把立565PRO

Aluminum alloy stems 565PRO



型号	565PRO
材质	铝合金
长度	45mm
角度	0°
前叉安装高度	30mm
适合前叉	28.6mm
适合车把	31.8mm
适合车型	Xc / AM / Enduro
重量	140g

Model	565PRO
Material quality	Aluminum alloy
Length	45mm
Angle	0°
Installation height	30mm
Front fork	28.6mm
Handlebar	31.8mm
Vehicle model	Xc / AM / Enduro
Weight	140g



TANKE

铝合金把立559

Aluminum alloy stems 559



型号	559
材质	铝合金
长度	35mm
角度	0°
前叉安装高度	41.8mm
适合前叉	28.6-31.8mm
适合车把	31.8mm
适合车型	XC / AM / Enduro
重量	136.3g
Model	559
Material quality	Aluminum alloy
Length	35mm
Angle	0°
Installation height	41.8mm
Front fork	28.6-31.8mm
Handlebar	31.8mm
Vehicle model	XC / AM / Enduro
Weight	136.3g



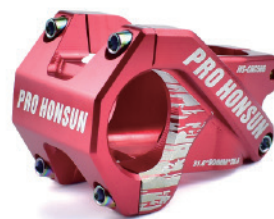
TANKE

铝合金把立566

Aluminum alloy stems 566

型号	566
材质	铝合金
长度	50mm
角度	0°
前叉安装高度	30mm
适合前叉	28.6mm
适合车把	31.8mm
适合车型	Xc / AM / Enduro
重量	190g

Model	566
Material quality	Aluminum alloy
Length	50mm
Angle	0°
Installation height	30mm
Front fork	28.6mm
Handlebar	31.8mm
Vehicle model	Xc / AM / Enduro
Weight	190g



TANKE

铝合金把立565

Aluminum alloy stems 565



型号	565
材质	铝合金
长度	45mm
角度	0°
前叉安装高度	30mm
适合前叉	28.6mm
适合车把	31.8mm
适合车型	XC / AM / Enduro
重量	140g

Model	565
Material quality	Aluminum alloy
Length	45mm
Angle	0°
Installation height	30mm
Front fork	28.6mm
Handlebar	31.8mm
Vehicle model	XC / AM / Enduro
Weight	140g





铝合金把立539

Aluminum alloy stems 539

型号	539
材质	铝合金
长度	35mm
角度	0°
前叉安装高度	30mm
适合前叉	28.6mm
适合车把	31.8mm
适合车型	Xc / AM / Enduro
重量	122.5g

Model	539
Material quality	Aluminum alloy
Length	35mm
Angle	0°
Installation height	30mm
Front fork	28.6mm
Handlebar	31.8mm
Vehicle model	Xc / AM / Enduro
Weight	122.5g





铝合金车把TK55

Aluminum alloy handlebars TK55

型号	TK-55
材质	铝合金
把立直径	31.8mm
后仰角度	3°
高升高度	55mm
长度	780mm
重量	468g

model	TK-55
material quality	Aluminum alloy
Vertical diameter	31.8mm
Rear tilt angle	3°
Elevated height	55mm
length	780mm
weight	468g

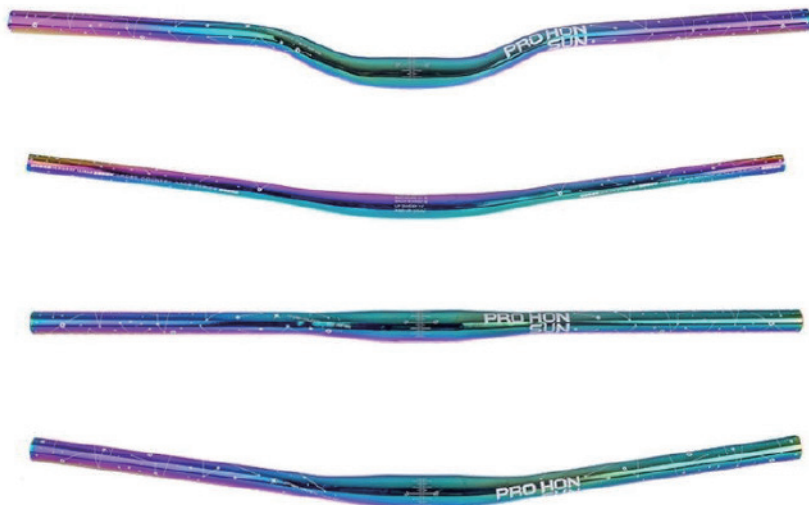
铝合金车把TK35

Aluminum alloy handlebars TK35

型号	TK-35
材质	铝合金
把立直径	31.8mm
后仰角度	3°
高升高度	35mm
长度	780mm
重量	468g

model	TK-35
material quality	Aluminum alloy
Vertical diameter	31.8mm
Rear tilt angle	3°
Elevated height	35mm
length	780mm
weight	468g





铝合金车把TK-25

Aluminum alloy handlebars TK-25

型号	TK-25
材质	铝合金
把立直径	31.8mm
后仰角度	3°
高升高度	25mm
长度	780mm
重量	331g

model	TK-25
material quality	Aluminum alloy
Vertical diameter	31.8mm
Rear tilt angle	3°
Elevated height	25mm
length	780mm
weight	331g

TANKE

铝合金车把TK-28

Aluminum alloy handlebars TK28

型号	TK-28
材质	铝合金
把立直径	31.8mm
后仰角度	3°
高升高度	0/25/35/55mm
长度	720-780mm
重量	479g

model	TK-28
material quality	Aluminum alloy
Vertical diameter	31.8mm
Rear tilt angle	3°
Elevated height	0/25/35/55mm
length	720-780mm
weight	479g





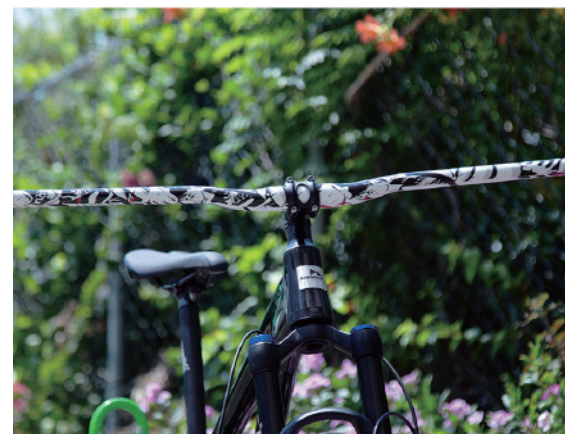
TANKE

水转印车把AL-03

Water transfer printing handlebar AL-03

型号	AL-03
材质	铝合金
把立直径	31.8mm
后仰角度	3°
高升高度	25mm
长度	785mm
重量	334g

model	AL-03
material quality	Aluminum alloy
Vertical diameter	31.8mm
Rear tilt angle	3°
Elevated height	25mm
length	785mm
weight	334g





Bicycle Brake Parts

自行车碟片、来令片、夹器

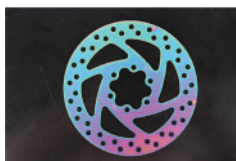
自行车刹车碟片

高强度不锈钢

Bicycle brake disc

型号	碟片
材料	不锈钢
尺寸	44mm
规格	140/160/180/203mm
颜色	炫彩/银色

Model	Brake disc
Material	Stainless steel
Size	44mm
Specifications	140/160/180/203mm
Colour	Dazzling colors/primary colors



140-06-xC



140-B05s



140-06



140-B048



160-B06s



160-G3Xc



160-B053-xC



160-023-Xc



160-023



160-G3



160-B096



160-B053



180-B049-xC



180-B054-xC



180-B089



180-B054



180-02



203-B071-xC



203-02-xC



203-02



203-B071



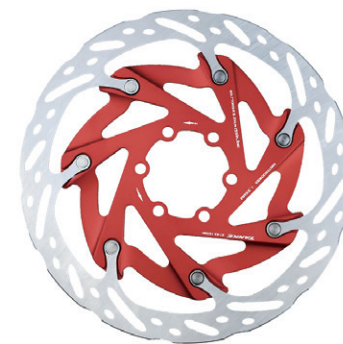
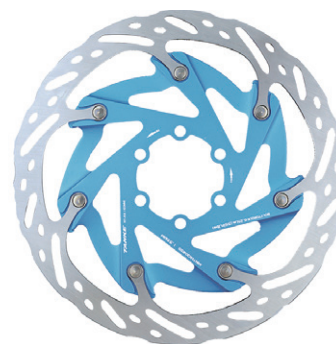
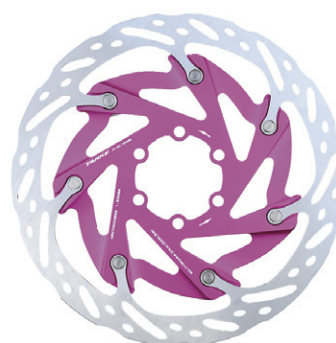
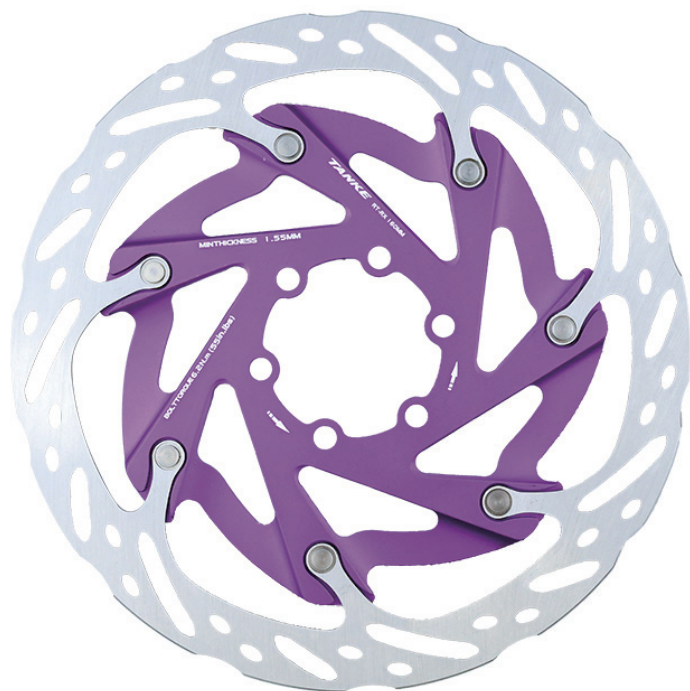
自行车刹车碟片

高强度不锈钢

Bicycle brake disc

型号	浮动碟片
材料	不锈钢
尺寸	44mm
规格	160mm
颜色	紫色/玫红色/黑色/蓝色/红色

Model	Floating Disc
Material	Stainless steel
Size	44mm
Specifications	160mm
Colour	Purple/Fuchsia/Black/Blue/Red



TANKE

自行车刹车来令片

耐磨铜+树脂材料

Bicycle brake disc

型号	TANKE
材料	铜质背板+复合树脂+铜丝纤维
适用	自行车/锂电车
包装	一副2片

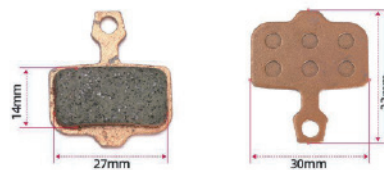
Model	TANKE
Material	Copper backboard+composite resin+copper wire fiber
Apply	Bicycle/lithium tram
Packing	A pair of 2 pieces

经典型来令片 / Classic friction plate



散热型来令片 / Heat dissipation type friction plate





TANKE

公路车碟刹夹器

铝合金材质

Bicycle brake disc

型号	TB-R1
材料	铝合金
安装尺寸	前70mm / 后34mm
前刹车	带安装座, 适用于140mm碟片和160mm碟片
后刹车	适用于140mm碟刹(无需安装座)
适用	公路自行车/公路越野自行车
重量	350g

Model	TB-R1
Material	aluminium alloy
Size	70mm front/34mm rear
Front brake	suitable for 140mm and 160mm discs
Rear brake	Suitable for 140mm disc brakes
Apply	Road bike/off-road bike
Weight	350g



**Bicycle seat cushion, seat tube
seat tube clamp**

自行车坐垫、座管、坐管夹



TANKE

自行车坐垫

Bicycle seat cushion

型号	Cu009
材质	PU+海绵填充
尺寸	25*15mm / 26.5*14.5mm
重量	28.34g / 305.6g

Model	Cu009
Material quality	PU+sponge filling
Size	25*15mm / 26.5*14.5mm
Weight	28.34g / 305.6g

碳纤维自行车坐垫

Carbon fiber bicycle seat cushion

型号	TANKE
底壳材质	碳纤维
表面材质	超纤皮革
内里材质	EVA填充
尺寸	140*235mm / 152*235mm
重量	110g / 118g

model	TANKE
Bottom shell	Carbon fibre
surface	Superfiber leather
Inner lining	EVA filling
size	140 * 235mm/152 * 235mm
weight	110g/118g





TANKE

自行车坐垫

Bicycle seat cushion

型号	TANKE
材质	Pvc合成皮革
尺寸	134*243mm
重量	258.7g

Model	TANKE
Material quality	PVC Synthetic Leather
Size	134*243mm
Weight	258.7g

蜂窝仿生结构坐垫

Carbon fiber bicycle seat cushion

型号	TANKE
底壳材质	尼龙纤维
表面材质	epu橡胶
座弓材质	铬钼弓
尺寸	240*150mm*50
重量	270g

model	TANKE
Bottom shell	Carbon fibre
surface	Superfiber leather
Inner lining	EVA filling
size	240*150mm*50
Weight	270g





铝合金座管018

Aluminum alloy stems 018

型号	018
材质	铝合金
长度	380mm
直径	27.2/30.8/31.6mm
重量	260g/279g/309g

Model	018
Material quality	Aluminum alloy
Length	380mm
Diameter	27.2/30.8/31.6mm
Weight	260g/279g/309g



TANKE

自行车坐管夹

Bicycle seat clamp



型号	Ts-30
口径	31.8mm / 34.9mm
材质	铝合金
重量	43.7g
Model	Ts-30
Caliber	31.8mm / 34.9mm
Material	Aluminum alloy
Weight	43.7g



型号	Ts-31
口径	28.6 / 31.8mm / 34.9mm
材质	铝合金
重量	23.5g
Model	Ts-31
Caliber	28.6 / 31.8mm / 34.9mm
Material	Aluminum alloy
Weight	23.5g



型号	Ts-32
口径	31.8mm / 34.9mm
材质	铝合金
重量	14g
Model	Ts-32
Caliber	31.8mm / 34.9mm
Material	Aluminum alloy
Weight	14g



型号	Ts-33
口径	31.8mm / 34.9mm
材质	铝合金
重量	38.9g
Model	Ts-33
Caliber	31.8mm / 34.9mm
Material	Aluminum alloy
Weight	38.9g



Bicycle handlebar case

自行车把套、下管保护贴

TANKE



自行车把套TG-03

Bicycle handle TG-03

型号	TG-03	Model	TG-03
握把材质	硅胶+TPU	Grip material	Silicone+TPU
内管材质	ABS+尼龙	Liner tube material	ABS+Nylon
长度	135mm	Length	135mm
内孔径	22.22mm	Liner aperture	22.22mm
重量	123g	Weight	123g



自行车把套TG-06

Bicycle handle TG-06

型号	TG-06	Model	TG-06
握把材质	硅胶+TPU	Grip material	Silicone+TPU
内管材质	ABS+尼龙	Liner tube material	ABS+Nylon
长度	135mm	Length	135mm
内孔径	22.22mm	Liner aperture	22.22mm
重量	106g	Weight	106g



TANKE

自行车护链条贴

Bicycle chain protection sticker

型号	TANKE
材质	500微米半软PVC
用途	链条保护
重量	21.4g
尺寸	223*60*2mm

Model	TANKE
Material quality	500 micron semi soft PVC
Purpose	Chain protection
Weight	21.4g
Size	223 * 60 * 2mm



自行车下管保护贴

Protective sticker for bicycle lower pipe

型号	TANKE
材质	500微米半软PVC
用途	下管保护
重量	56g
尺寸	340*70*2.8mm

Model	TANKE
Material quality	500 micron semi soft PVC
Purpose	Lower pipe protection
Weight	56g
Size	340*70*2.8mm

Bicycle hardware accessories

自行车五金配件



自行车截链器

Aluminum alloy stems 018

型号	018
材质	铝合金
长度	380mm
直径	27.2/30.8/31.6mm
重量	260g/279g/309g

Model	018
Material quality	Aluminum alloy
Length	380mm
Diameter	27.2/30.8/31.6mm
Weight	260g/279g/309g



TANKE

自行车油管切割工具

Bicycle oil pipe cutting tool

型号	TtB-T01
材质	铝合金
重量	120g
尺寸	88*66*13mm
用途	适用于普通安装 5/5.5mm油管和油针或五线体

Model	TtB-T01
Material quality	aluminium alloy
Weight	120g
Size	88 * 66 * 13mm
Purpose	Suitable for regular installation 5/5.5mm oil pipe and needle or five wire body

注油工具

Oil injection tool

型号	TANKE	Model	TANKE
材质	塑料	Material quality	plastic
重量	20.7g	Weight	20.7g
包装清单	2*油管	Packaging List	2 * Oil pipe





TANKE

自行车后拨保护器

Bicycle rear derailleur protector

型号	TANKE
材质	铝合金
适用	使用快拆轮组的自行车
尺寸	高60mm/48mm
工艺	CNC加工 阳极表面

型号	TANKE
材质	aluminium alloy
适用	Bicycles using quick release wheels
尺寸	60mm/48mm high
工艺	CNC machining of anode surface



自行车把立盖

Bicycle handle cover

型号	Ts-01
材质	铝合金
盖板直径	33mm
重量	盖子5.4g/螺丝2.8g
螺丝	M6*30mm
适用前叉直径	28.6mm

model	Ts-01
material quality	Aluminium alloy
Cover plate diameter	33mm
weight	Lid 5.4g/screw 2.8g
screw	M6 * 30mm
Front fork diameter	28.6mm



中锁转六钉转换座

Central lock to six nail conversion seat

型号	TANKE
材质	铝合金
厚度	9mm
重量	30g
尺寸	55*44*9mm

Model	TANKE
Material quality	aluminium alloy
Thickness	9mm
Weight	30g
Size	55*44*9mm



自行车中锁盖

Bicycle lock cover

型号	TL-891
材质	铝合金
内径	26mm
重量	8-10g
边缘厚度	4mm

Model	TL-891
Material quality	aluminium alloy
Internal diameter	26mm
Weight	8-10g
Edge thickness	4mm



自行车螺丝系列

Bicycle screw series



规格	M5*10mm
材质	钢合金
帽宽	9.5mm
重量	1.2g/PCs
Specifications	M5*10mm
Material	Titanium alloy
Hat width	9.5mm
Weight	1.2g/PCs



规格	M6*18mm
材质	钢合金
扭矩	1-2 N.m
重量	5.5g/PCs
Specifications	M6*18mm
Material	steel alloy
Torque	1-2 N.m
Weight	5.5g/PCs



规格	M5*15mm/M5*18mm
材质	钢合金
扭矩	1-2 N.m
重量	3g/PCs
Specifications	M5*15mm/M5*18mm
Material	steel alloy
Torque	1-2 N.m
Weight	3g/PCs



规格	M6*30mm
材质	铝合金
帽宽	10mm
重量	2.8g/PCs
Specifications	M6*30mm
Material	Aluminum alloy
Hat width	10mm
Weight	2.8g/PCs



TANKE

自行车盘片螺丝

Bicycle disc screws

型号	M8*8
材质	钢
重量	5g/一件
螺丝尺寸	8*8mm
螺母尺寸	5*10mm

Model	M8 * 8
Material quality	steel
Weight	5g/piece
Screw Size	8 * 8mm
Nut size	5 * 10mm



自行车头管标

Bicycle head pipe marking

品牌	TANKE
材质	铝合金
正面	透明保护膜
背面	3M背胶
尺寸	35*33mm

Brand	TANKE
Material quality	aluminium alloy
Front	Transparent protective film
Back	3M adhesive backing
Size	35 * 33mm



44-56mm

137g



42-52mm

106g



44-55mm

126g



42-52mm

134.3g



44-44mm

135g



44-44mm

113g

TANKE

自行车碗组系列

Bicycle bowl set series

型号	TANKN
材质	铝合金
适用车架	上内径: 41.8mm, 下内径52mm
适用前叉	上外径28.6mm, 下外径30mm
重量	113g-137g
Model	TANKN
Material quality	aluminium alloy
Applicable frame	Upper inner diameter: 41.8mm, lower inner diameter: 52mm
Applicable front fork	Upper outer diameter: 28.6mm, lower outer diameter: 30mm
Set weight	113g-137g



44-56mm



42-52mm



44-55mm



42-52mm



44-44mm



44-44mm

TANKE

自行车碗组系列

Bicycle bowl set series

型号	TANKN
材质	铝合金
适用车架	上内径: 41.8mm, 下内径52mm
适用前叉	上外径28.6mm, 下外径30mm
重量	113g-137g
Model	TANKN
Material quality	aluminium alloy
Applicable frame	Upper inner diameter: 41.8mm, lower inner diameter: 52mm
Applicable front fork	Upper outer diameter: 28.6mm, lower outer diameter 30mm
Set Weight	113g-137g



TANKE

自行车头盔

Bicycle helmet

型号	TA026
材质	PC外壳+EPS抗冲击泡沫
头围	54-64mm
安全标准	CE
重量	250g

Model	TA026
Material quality	PC shell+EPS impact resistant foam
Head circumference	54-64mm
Safety standards	CE
Weight	250g

TANKE

TANKE