



中策橡胶

zc rubber

# TRUCK & BUS TYRE CATALOG

LONG HAUL | REGIONAL | MIXED SERVICE | URBAN | WINTER

General Version





COMPANY INTRODUCTION

**TOP 9**  
No. 9 of Top 75 Global Tyre Manufacturers

**SINCE 1958**  
Established in Year 1958

**30,000 EMPLOYEES**  
Support from Over 30,000 Employees

**200 MARKETS**  
Trust from Customers Across More than 200 Markets

Zhongce Rubber Group Co., Ltd (ZC-Rubber) is a global tyre company based in Hangzhou, China and was founded in 1958. Over our more than 60 years of history, we experienced continuous growth in quality and reputation to become the Top 10 tyre manufacturer worldwide today.

Our engineers with our international R&D team focus on constant technological development and innovation spending millions of US dollars in research and development each year and upgrading our production and testing facilities. The ET Industrial Brain in the production process promises our smart production and guarantee tyres with high quality, safety, and value with maximum efficiency.

We have formed an extensive global service network of about 1,200 distributors with 250,000 sales locations in 160 countries. Our subsidiaries in Thailand, Germany, Brazil, and the United States serve customers without any difference in time and language. We are dedicated to better support our suppliers, distributors, and customers through a one-stop service.

Safe and Value are always the key of our company. We take pride in the superior quality of our tyre products and the first-rate services. We are still endeavoring to become one of the most respected tyre manufacturers globally and craft a better future with all partners and friends.

Most Advanced Equipment

Best Raw Material

Leanest Management

Latest Technology

Least Energy Consumption

Most Suitable Products

COMPANY MISSION

WE ARE COMMITTED TO  
ADVANCING TOWARDS  
FUTURE MOBILITY

COMPANY VISION

TO BE A GLOBAL LEADING  
TYRE MANUFACTURER



China Compulsory Certification



US DOT Certification



European E-MARK Certification



SNI Certification of Indonesia

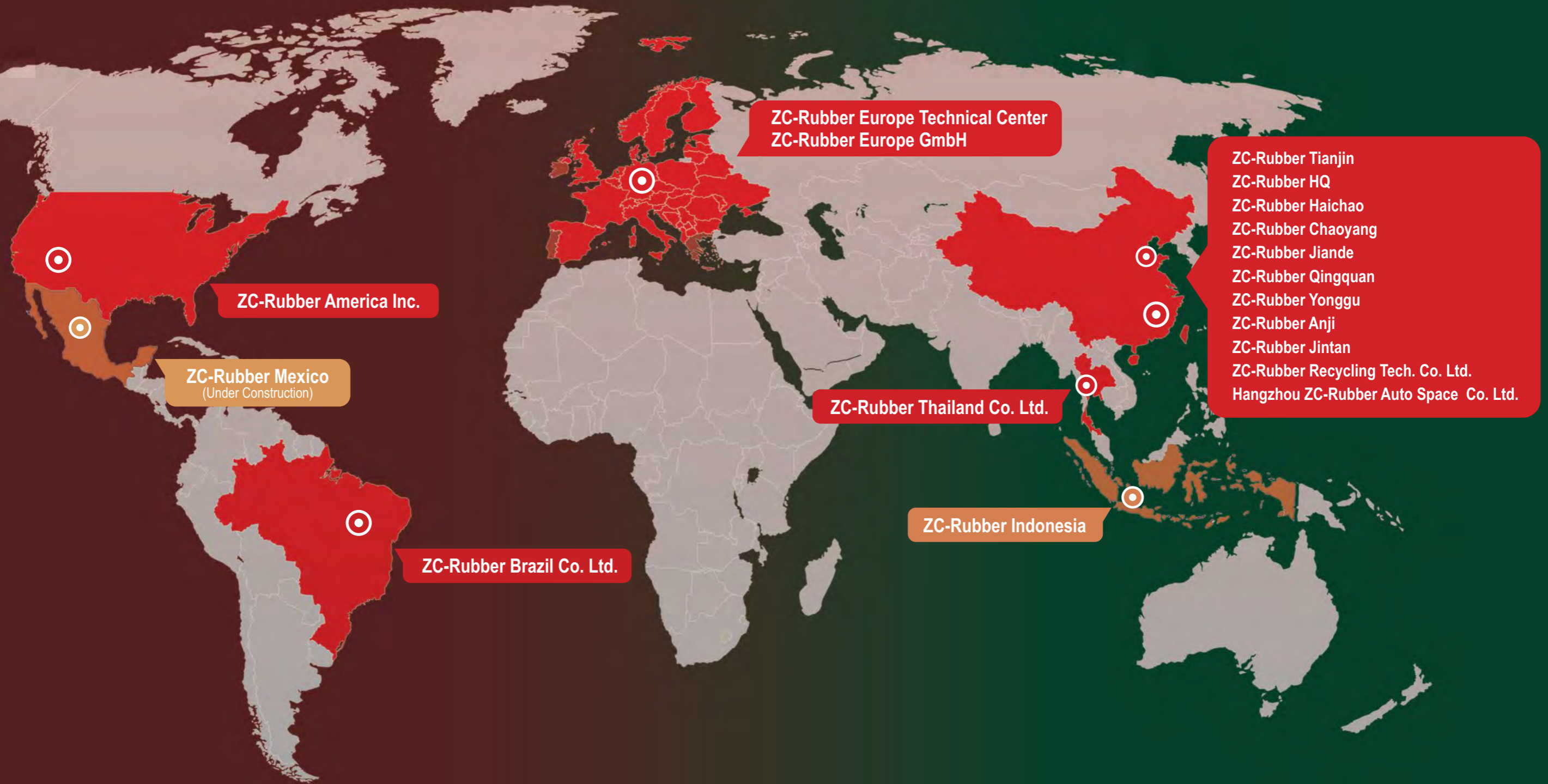


BIS Certification of India

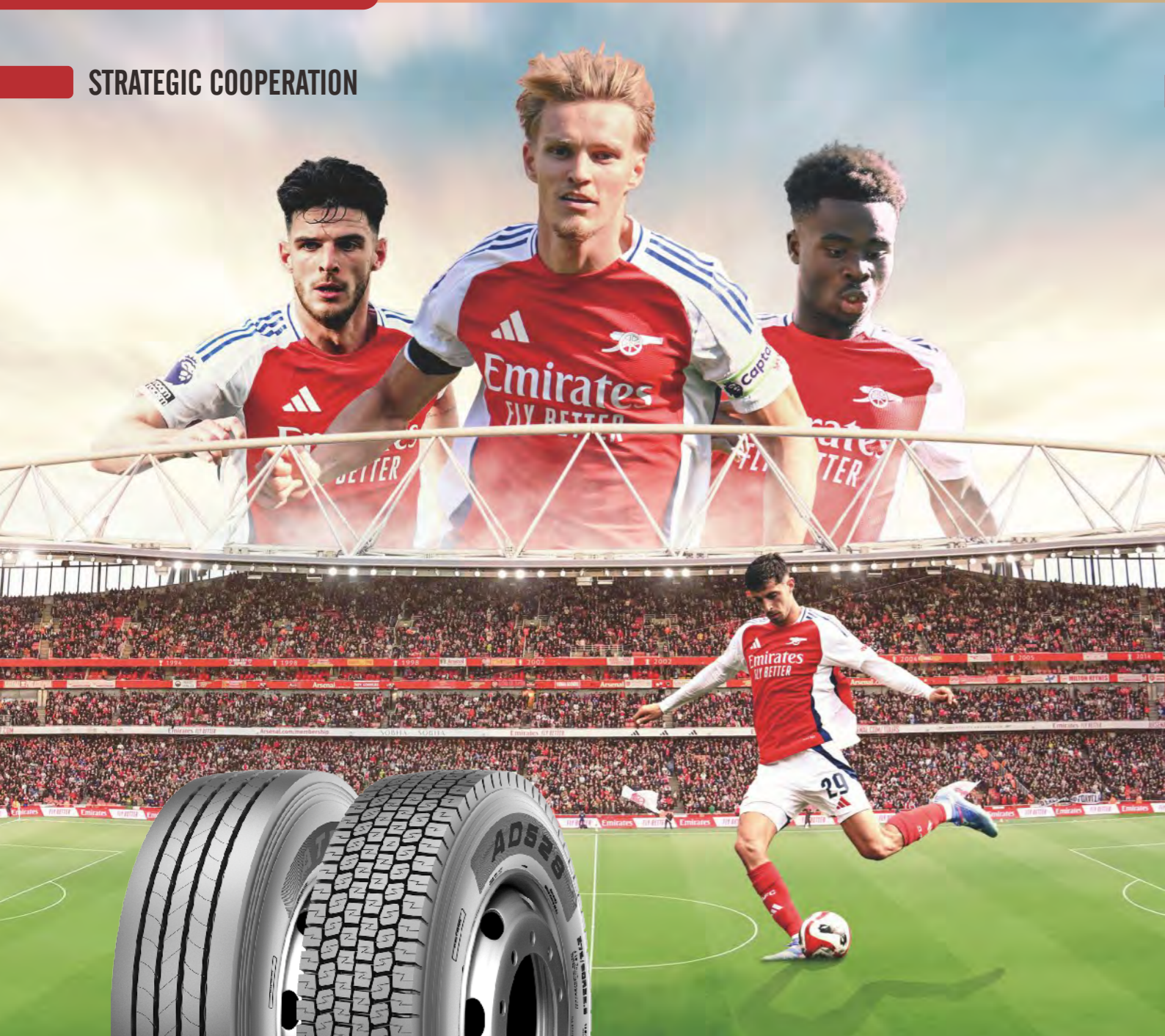


INMETRO Certification of Brazil

GLOBAL BRANCHES & SUBSIDIARIES



STRATEGIC COOPERATION



OFFICIAL GLOBAL PARTNER OF ARSENAL FOOTBALL CLUB

ALWAYS MOVING FORWARD

OE CUSTOMERS



KEY ACCOUNTS



KEY SUPPLIERS





## Pre-Strain Contour Theory (PSCT)

Minimized tyre profile deformation



After more than 20 years of painstaking research, ZC-Rubber TBR Research Center has finally successfully developed the Pre-strain Contour theory (PSCT) and four technologies derived from this theory with independent

intellectual property rights. In 2020, the newly launched ZC-Rubber premium truck and bus tyres based on the theories and technologies have been recognized by the market.

- Tyre Simulation of Pre-stressing Force through FEA (Finite Elements Analysis)
- Simulation Iteration based on pre-set tyre profile
- Minimized tyre profile deformation when inflated

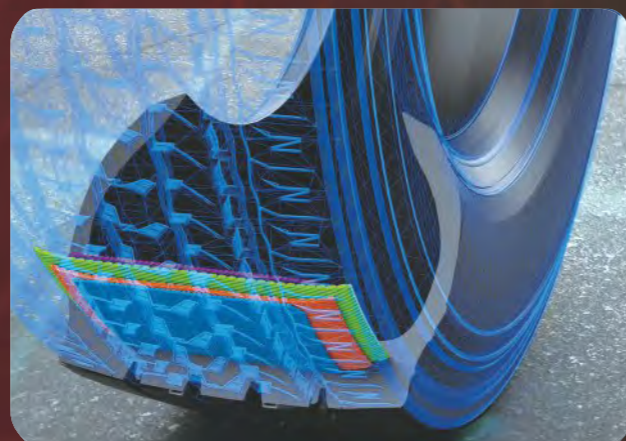
Pre-strain Contour Theory is a new truck and bus tyre design theory developed by ZC-Rubber. We conducted the simulation of real tyre performance under different scenarios and conditions of various commercial vehicle

models. Based on the new theory and core technologies, the tyre can achieve minimized profile deformation and heat generation when inflated and loaded, which greatly improves its tyre life and overall performance.

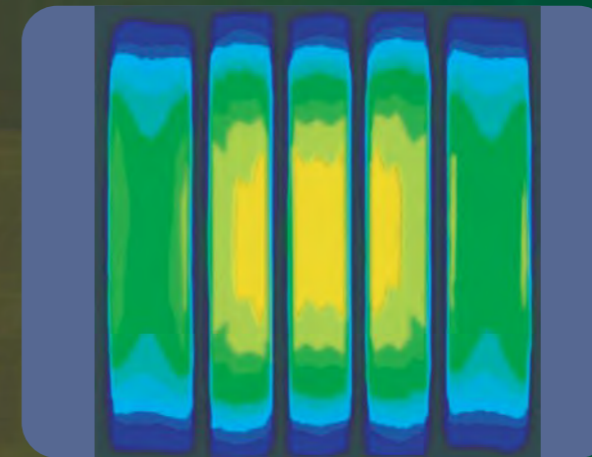
## BTCT Belt Tension Control Technology (BTCT) - Enhanced tyre life and durability

- Reduced shear force among steel belts
- Tension improved at the end of belts but reduced at the center
- Reduced deformation at the end of belts at high speed

BTCT means Belt Tension Control Technology. Based on PSCT, the shear force among steel belts is greatly reduced. It improves the tension at the end of belts but reduces the tension at the center, thus ensuring the minimized tyre deformation at high speed. This features the crown with low heat generation and high strength, bringing a 20% improvement in durability and longer tyre life.



## PDOT Pressure Distribution Optimization Technology (PDOT) - Longer mileage and higher fuel economy



- Optimized Tyre Footprint and Better Contact Pressure Distribution
- Rectangular Footprint Shape for Even Pressure Distribution
- Reduced Tyre Slipping in Cornering
- Improved Tyre Life and Fuel Economy

The pressure distribution of the tyre footprint affects fuel consumption and treadwear. PDOT is used to optimize the tyre footprint and improve the contact pressure distribution. In a straight-line driving, the footprint maintains a rectangular shape for even pressure distributions; when cornering, it reduces slipping between the tyre and the ground. This improves your tyre life and fuel economy.

## GSCT Groove Strain-stress Control Technology (GSCT) - Less occurrence of groove cracking in driving

- Controllable Groove Pattern Shape When Inflated
- Uniform Distribution of Pattern Groove Bottom Stress for Lower Heat Generation
- Less Occurrence of Groove Cracking in Driving

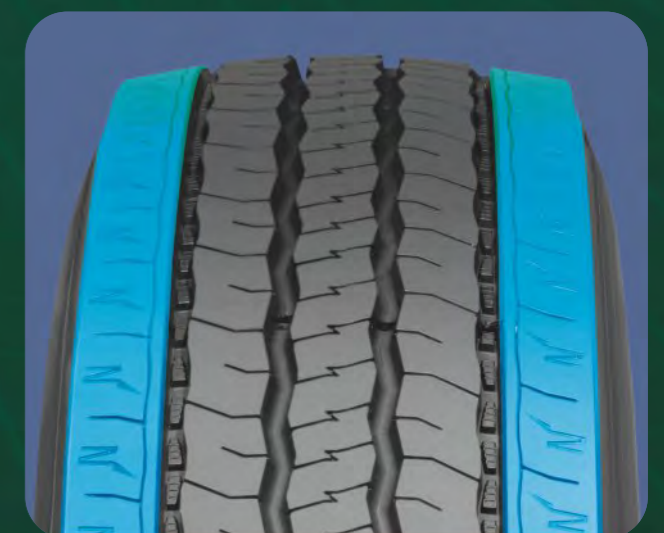
Groove Strain-stress Control Technology can control the groove width change when the tyre is inflated. This would reduce stress concentration in pattern groove bottom, thus reducing heat generation. It minimizes the occurrence of groove cracking and prolongs tyre life.



## SSHT Shoulder Stiffness Hold Technology (SSHT) - Less uneven wear

- Less Uneven Wear of Tyre Better Tyre Inflation Profile through PSCT
- Reinforced Tyre Sidewall
- Optimized Tyre Footprint, Improved Contact Pressure Distribution and Reduced Heat Generation of Sidewall Deformation
- Less Uneven Wear of Tyre






Shoulder Stiffness Hold Technology brings the tyre inflation profile closer to the design profile. It greatly strengthens the tyre sidewall. Meanwhile, it optimizes tyre footprints, improves contact pressure distributions, and reduces the heat generated by sidewall deformation. This technology cuts the chances of sidewall bubbles and solves the problem of tyre uneven wear.





# CONTENTS

ZC-RUBBER TRUCK & BUS TYRE

	-----	13
Long Haul		
	-----	32
Regional		
	-----	49
Mixed Service		
	-----	71
Urban		
	-----	75
Winter		

ROAD		POSITION	STEER/TRAILER	DRIVE	TRAILER
LONG HAUL			 AS898 AS858 AZ817 AS668 AZ670 AT586  AS678 AZ599 AS578 CR976A CR960A CR989	 AD818 AD819 AD733 AD713 AD751 CM335/A  AD710/A CM983 AD757 AD781 AD528	 AT566 AT555 AT556  CR931 CR915
		REGIONAL	 AZ850 AT530 AZ828 CM958 AZ676 AZ534+ MZ679 AZ531 AZ675 AZ712  MD752 AZ655S AZ650 CM772 CM912 AZ589 AZ686 AZ697 CR907 CR950	 AD756 CM980 CM987/E CM986	 AT532 AT512 AT560
MIXED SERVICE		ON & OFF	 CR926+/B/D AT557 CM988 EZ573  CM998/+ EZ861 EZ865 EZ867 CM913  CM954 CM923 MD738 EZ356 EZ373 MD777 EZ591 MD726 EZ377Pro EZ399 CB999 CB981 CB901 EZ372	 EZ870 EZ310 CB972 CB919 CB905 CB332 EZ330	
		MINING			
URBAN			 CR906II AZ675 AZ687	 MD703	
WINTER			 NS785 NZ780 NZ782 NZ787 NZ788	 ND783 IceTrac N2	

**APPLICATION AND KEY FEATURE LEGEND**

- Long Haul
- Regional
- Mixed Service
- Urban
- Winter

- Long distance journey with constant speed, less braking and accelerating
- Less fuel consumption and comfortable ride
- High mileage performance
- Shorter journey with frequent braking, accelerating and turning
- Improved road grip with maximum mileage
- Exceptional tough type

- Used both on and off road
- Heavy loads and outstanding durability
- Special protection against the damage caused by the road condition
- Frequent speed changes and turning
- Resistance to curb impact
- Excellent road grip and durable high mileage

- Contribute to safety and operating in winter conditions
- Outstanding grip performance on ice and snow road surface
- Stable handling during braking and turning

# LONG HAUL



## LONG HAUL

Long distance journey with constant speed and less braking and accelerating  
 Less fuel consumption and comfortable ride  
 High mileage performance

### STEER/TRAILER

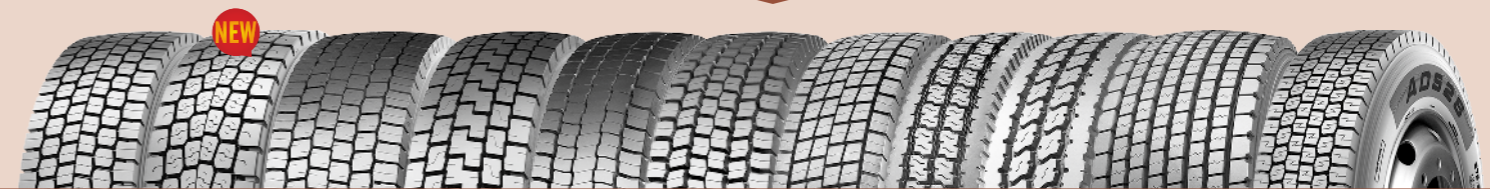


AS898 AS858 AZ817 AS668 AZ670 AT586



AS678 AZ599 AS578 CR976A CR960A CR989

### DRIVE



AD818 AD819 AD733 AD713 AD751 CM335/A AD710/A CM983 AD757 AD781 AD528

### TRAILER



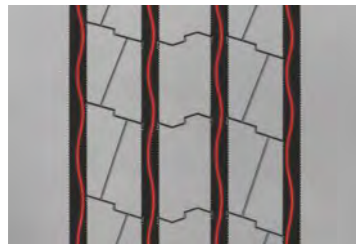
AT566 AT555 AT556 CR931 CR915



# AS898



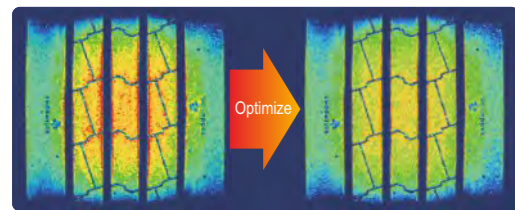
High mileage tyres suitable for long haul application (High mileage formula, high saturation, Large parameters)



The main ditch adopts a zigzag design with groove bottom patterns, Strengthen stone removal performance to avoid tyre malfunctions

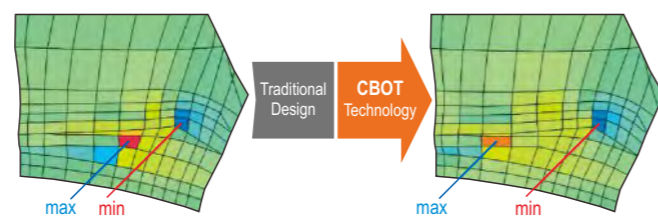
### Footprint

Finite element simulation analysis, More uniform distribution of tyre contact pressure, improve uneven wear performance



### Belt Durability

Optimal belt gap minimize shearing force between the belts with ZC-Rubber's CBOT technology

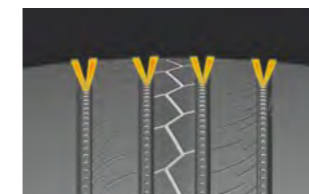


# AS858

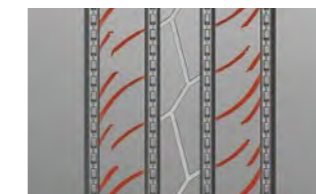


Brand new flagship tyre for long haul application with Longer mileage and higher fuel economy based on PSCT

BTCT technology provides a rectangle footprint and even wear



V-shape groove design minimizes the occurrence of groove cracking



Deep siping design guarantee a stability driving through the whole tyre life



Shoulder heat dissipation design reduce tread rigidity and improve the durability of tyre

Size	LR / PR	Service index	Tread Depth (mm)	Standard Rim	Overall Diameter (mm)	Section Width (mm)	Max. Load Capacity at Cold Inflation Pressure							
							Single				Dual			
							(kg)	(lbs)	(kPa)	(psi)	(kg)	(lbs)	(kPa)	(psi)
11.00R20	J/18	152/149K	18.5	8.00	1085	293	3550	7825	930	135	3250	7165	930	135
9.5R17.5	J/18	143/141J	13.0	6.75	840	234	2725	6005	875	128	2575	5675	875	128
215/75R17.5	H/16	135/133J	13.0	6.00	765	216	2180	4805	850	123	2060	4540	850	123
235/75R17.5	H/16	143/141J	13.5	6.75	792	236	2725	6005	875	128	2575	5675	875	128
11R22.5	H/16	148/145L	17.5	8.25	1054	279	3150	6940	850	123	2900	6390	850	123
12R22.5	J/18	152/149L	18.5	9.00	1085	300	3550	7830	930	135	3250	7160	930	135
295/80R22.5	J/18	152/149M	16.0	9.00	1044	298	3550	7830	900	131	3250	7160	900	131
315/80R22.5	J/18	154/151M(156/153L)	15.0	9.00	1076	312	3750	8270	830	120	3450	7610	830	120

🇨🇳 Made in China 🇹🇭 Made in Thailand

Size	LR / PR	Service index	Tread Depth (mm)	Standard Rim	Overall Diameter (mm)	Section Width (mm)	Max. Load Capacity at Cold Inflation Pressure							
							Single				Dual			
							(kg)	(lbs)	(kPa)	(psi)	(kg)	(lbs)	(kPa)	(psi)
11.00R20	J/18	152/149K	16.0	8.0	1085	293	3550	7825	930	135	3250	7165	930	135
12.00R20	L/20	156/153J	17.0	8.5	1125	315	4000	8820	900	131	3650	8050	900	131
11R22.5	H/16	148/145L	17.5	8.25	1065	279	3150	6940	850	123	2900	6390	850	123
11R22.5	J/18	149/146L	17.5	8.25	1065	279	3250	7160	930	135	3000	6610	930	135
12R22.5	J/18	152/149L	18.0	9.00	1085	300	3550	7830	930	135	3250	7160	930	135
12R22.5	J/18	152/149L	18.0	9.00	1085	300	3550	7830	930	135	3250	7160	930	135

🇨🇳 Made in China 🇹🇭 Made in Thailand



- Advanced 5-Rib tread provides even wear and remarkable handling
- Hidden longitudinal ditch design, Collaborative with 3D three-dimensional steel sheets, Enhance the strength of adjacent pattern blocks, Increase tyre grip
- Shoulder longitudinal groove design with twists, Provide better handling stability, Gutter bottom adhesive nail design, Improve stone removal performance

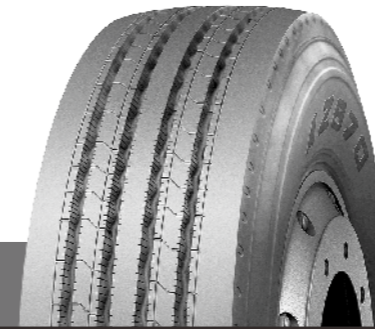


## AZ817 PRO / AZ817

● : Recommendable  
● : Available

Size	LR / PR	Service index	Tread Depth (mm)	Standard Rim	Overall Diameter (mm)	Section Width (mm)	Max. Load Capacity at Cold Inflation Pressure							
							Single				Dual			
							(kg)	(lbs)	(kPa)	(psi)	(kg)	(lbs)	(kPa)	(psi)
● 315/60R22.5(AZ817PRO)	L/20	154/150L(152/148M)	14.5	9.75	950	313	3750	8270	900	130	3350	7390	900	130
● 315/70R22.5	L/20	156/150L	14.5	9.00	1014	312	4000	8820	900	130	3350	7390	900	130

● Made in China



- Premium five-rib tread with various pitches to provide quiet and comfortable riding
- Stone ejection design reduces stone retention and casing penetration
- Computer aided casing design helps improve footprint for better mileage performance



## AZ670

● : Recommendable ● : Available

Size	LR / PR	Service index	Tread Depth (mm)	Standard Rim	Overall Diameter (mm)	Section Width (mm)	Max. Load Capacity at Cold Inflation Pressure							
							Single				Dual			
							(kg)	(lbs)	(kPa)	(psi)	(kg)	(lbs)	(kPa)	(psi)
● 11R22.5	G/14	144/142M	16.0	8.25	1054	279	2800	6175	720	105	2650	5840	720	105
● 11R22.5	H/16	148/145M	16.0	8.25	1054	279	3150	6940	850	123	2900	6390	850	123
● 12R22.5	J/18	152/149L	16.0	9.00	1085	300	3550	7830	930	135	3250	7160	930	135
● 255/70R22.5	H/16	140/137M	15.0	7.50	930	255	2500	5510	830	120	2300	5070	830	120
● 295/80R22.5	H/16	150/147M	16.0	9.00	1044	298	3350	7390	830	120	3075	6780	830	120
● 295/80R22.5	J/18	152/149M	16.0	9.00	1044	298	3550	7830	900	131	3250	7160	900	131

● Made in China ● Made in Thailand



- Premium five-rib tread provides outstanding handling for steer application
- Decoupling grooves prevent uneven tread wear and ensure long tread life for long distance travel
- Wide and deep tread guarantee longer mileage with affordable cost and remarkable value



## AS668

● : Recommendable ● : Available

Size	LR / PR	Service index	Tread Depth (mm)	Standard Rim	Overall Diameter (mm)	Section Width (mm)	Max. Load Capacity at Cold Inflation Pressure							
							Single				Dual			
							(kg)	(lbs)	(kPa)	(psi)	(kg)	(lbs)	(kPa)	(psi)
● 11R22.5	G/14	144/142M	17.0	8.25	1054	279	2800	6175	720	105	2650	5840	720	105
● 11R22.5	H/16	148/145L	17.0	8.25	1054	279	3150	6940	850	123	2900	6390	850	123
● 11R22.5	J/18	149/146L	17.0	8.25	1054	279	3250	7160	930	135	3000	6610	930	135
● 12R22.5	J/18	152/149L	17.5	9.00	1085	300	3550	7830	930	135	3250	7160	930	135
● 13R22.5	J/18	156/151K	18.0	9.75	1124	320	4000	8820	875	128	3450	7610	875	128
● 275/70R22.5	H/16	148/145L	15.0	8.25	958	276	3150	6940	900	130	2900	6395	900	130
● 295/75R22.5	G/14	144/141L	17.0	9.00	1014	298	2800	6175	760	110	2575	5675	760	110
● 295/80R22.5	H/16	150/147M	16.0	9.00	1044	298	3350	7390	830	120	3075	6780	830	120
● 295/80R22.5	J/18	152/149M	16.0	9.00	1044	298	3550	7830	900	131	3250	7160	900	131
● 315/80R22.5	J/18	154/151M(156/150L)	16.5	9.00	1076	312	3750	8270	830	120	3450	7610	830	120
● 315/80R22.5	L/20	157/154K	16.5	9.00	1076	312	4125	9090	900	130	3750	8270	900	130
● 11R24.5	G/14	146/143L	17.0	8.25	1104	279	3000	6610	720	105	2725	6005	720	105
● 11R24.5	H/16	149/146L	17.0	8.25	1116	279	3250	7160	830	120	3000	6610	830	120

● Made in China ● Made in Thailand



- High saturation pattern design, Improving tyre wear resistance, Significantly increase vehicle mileage
- The main ditch adopts a zigzag design with groove bottom patterns, Strengthen stone removal performance to avoid tyre malfunctions
- Design of circumferential drainage shallow ditch, Improve vehicle handling



## AT586

● : Recommendable ● : Available

Size	LR / PR	Service index	Tread Depth (mm)	Standard Rim	Overall Diameter (mm)	Section Width (mm)	Max. Load Capacity at Cold Inflation Pressure							
							Single				Dual			
							(kg)	(lbs)	(kPa)	(psi)	(kg)	(lbs)	(kPa)	(psi)
● 315/80R22.5	J/18	154/151M(156/153L)	13.5	9.00	1076	312	3750	8270	830	120	3450	7610	830	120

● Made in China



- Applicable for steer and free-rolling wheel position
- Five ribs with four straight grooves for precise handling
- Special designed tyre casing for better mileage and more value for customers
- Cross rib sipes provide better wet traction and reduce external noise



● Recommendable ● Available

## AS678



- Four wide tread grooves allows excellent water drainage
- Multi siping provides outstanding traction on both dry and wet road surfaces
- Computer designed tyre casing assures excellent footprint for extended tyre life



● Recommendable ● Available

## AZ599

Size	LR / PR	Service index	Tread Depth (mm)	Standard Rim	Overall Diameter (mm)	Section Width (mm)	Max. Load Capacity at Cold Inflation Pressure							
							Single				Dual			
							(kg)	(lbs)	(kPa)	(psi)	(kg)	(lbs)	(kPa)	(psi)
● 11.00R20	J/18	152/149K	16.0	8.0	1085	293	3550	7825	930	135	3250	7165	930	135
● 11.00R22	H/16	152/149K	14.2	8.0	1122	288	3550	7825	830	120	3250	7165	830	120
● 9.5R17.5	G/14	129/127L	13.0	6.75	842	240	1850	4080	750	109	1750	3860	750	109
● 9.5R17.5	H/16	143/141J	13.0	6.75	842	240	2725	6005	875	128	2575	5675	875	128
● 225/80R17.5	H/16	123/122L	14.0	6.75	805	226	1550	3415	700	102	1500	3305	700	102
● 225/90R17.5	H/16	127/125L	13.0	6.75	851	226	1750	3860	700	102	1650	3640	700	102
● 11R22.5	G/14	144/142M	14.2	8.25	1054	279	2800	6175	720	105	2650	5840	720	105
● 11R22.5	H/16	146/143L	14.2	8.25	1054	279	3000	6610	720	105	2725	6005	720	105
● 11R22.5	H/16	148/145L	14.2	8.25	1054	279	3150	6940	850	123	2900	6390	850	123
● 255/70R22.5	H/16	140/137M	14.5	7.50	930	255	2500	5510	830	120	2300	5070	830	120
● 295/75R22.5	G/14	144/141L	14.2	9.00	1014	298	2800	6175	760	110	2575	5675	760	110
● 275/80R22.5	H/16	149/146M	14.0	8.25	1012	276	3250	7165	850	123	3000	6610	850	123
● 295/80R22.5	H/16	150/147M	15.0	9.00	1044	298	3350	7390	830	120	3075	6780	830	120
● 295/80R22.5	J/18	152/149M	15.0	9.00	1044	298	3550	7830	900	131	3250	7160	900	131
● 315/80R22.5	J/18	154/151M(156/153L)	15.0	9.00	1076	312	3750	8270	830	120	3450	7610	830	120
● 315/80R22.5	L/20	157/154K	15.0	9.00	1076	312	4125	9090	900	130	3750	8270	900	130
● 11R24.5	G/14	146/143L	14.2	8.25	1104	279	3000	6610	720	105	2725	6005	720	105
● 11R24.5	H/16	149/146L	14.2	8.25	1104	279	3250	7160	830	120	3000	6610	830	120
● 285/75R24.5	G/14	144/141L	14.2	8.25	1050	283	2800	6175	760	110	2575	5675	760	110

● Made in China ● Made in Thailand

Size	LR / PR	Service index	Tread Depth (mm)	Standard Rim	Overall Diameter (mm)	Section Width (mm)	Max. Load Capacity at Cold Inflation Pressure							
							Single				Dual			
							(kg)	(lbs)	(kPa)	(psi)	(kg)	(lbs)	(kPa)	(psi)
● 215/75R17.5	H/16	135/133J	12.0	6.00	767	211	2180	4805	850	123	2060	4540	850	123
● 225/80R17.5	H/16	123/122L	13.0	6.75	797	233	1550	3415	700	102	1500	3305	700	102
● 235/75R17.5	H/16	143/141J	13.0	6.75	797	233	2725	6005	875	128	2575	5675	875	128
● 245/70R17.5	J/18	143/141J	14.0	7.50	789	248	2725	6005	875	128	2575	5675	875	128
● 225/70R19.5	G/14	128/126N	13.0	6.75	811	226	1800	3970	760	110	1700	3750	760	110
● 245/70R19.5	H/16	136/134M	14.0	7.50	839	248	2240	4940	830	120	2120	4675	830	120
● 265/70R19.5	H/16	140/138M	14.0	7.50	867	262	2500	5510	775	112	2360	5200	775	112
● 11R22.5	H/16	148/145L	14.2	8.25	1054	279	3150	6940	850	123	2900	6390	850	123
● 255/70R22.5	H/16	140/137M	14.5	7.50	930	255	2500	5510	830	120	2300	5070	830	120
● 275/70R22.5	H/16	148/145L	14.5	8.25	958	276	3150	6940	900	130	2900	6395	900	130
● 295/75R22.5	G/14	144/141L	14.2	9.00	1014	298	2800	6175	760	110	2575	5675	760	110
● 295/80R22.5	J/18	152/149M	15.0	9.00	1044	298	3550	7830	900	131	3250	7160	900	131
● 315/80R22.5	J/18	154/151M(156/153L)	15.0	9.00	1076	312	3750	8270	830	120	3450	7610	830	120
● 11R24.5	G/14	146/143L	14.2	8.25	1104	279	3000	6610	720	105	2725	6005	720	105
● 11R24.5	H/16	149/146J	14.2	8.25	1104	279	3250	7160	830	120	3000	6610	830	120
● 285/75R24.5	G/14	144/141L	14.2	8.25	1050	283	2800	6175	760	110	2575	5675	760	110

● Made in China



- Optimized steer and trailer pattern for long haul application with fuel efficiency
- High volume pattern design guarantees long mileage and fuel efficiency
- Straight simple rib pattern improves efficient water evacuation for excellent wet traction and handling
- Four waved grooves aids in stone rejection performance
- Improved close shoulder reduces the irregular wear throughout the duration of tread-life



● : Recommendable   ● : Available

## AS578

Size	LR / PR	Service index	Tread Depth (mm)	Standard Rim	Overall Diameter (mm)	Section Width (mm)	Max. Load Capacity at Cold Inflation Pressure							
							Single				Dual			
							(kg)	(lbs)	(kPa)	(psi)	(kg)	(lbs)	(kPa)	(psi)
● 11.00R20	J/18	152/149K	16.0	8.0	1085	293	3550	7825	930	135	3250	7165	930	135
● 9.5R17.5	H/16	143/141J	13.0	6.75	842	240	2725	6005	875	128	2575	5675	875	128
● 10R22.5	H/16	144/142M	15.0	7.50	254	1019	2800	6175	900	130	2650	5840	900	130
● 11R22.5	H/16	148/145L	14.2	8.25	1054	279	3150	6940	850	123	2900	6390	850	123
● 12R22.5	J/18	152/149L	15.5	9.00	1085	300	3550	7830	930	135	3250	7160	930	135
● 295/60R22.5	J/18	150/147L	15.0	9.00	926	292	3350	7390	900	131	3075	6780	900	131
● 245/70R22.5	J/18	142/139K	15.0	7.50	915	248	2650	5840	900	131	2430	5360	900	131
● 255/70R22.5	H/16	140/137M	14.5	7.50	930	255	2500	5510	830	120	2300	5070	830	120
● 275/70R22.5	H/16	144/141M	15.5	8.25	958	276	2800	6175	830	120	2575	5675	830	120
● 315/70R22.5	L/20	156/150L	13.5	9.00	1014	312	4000	8820	900	130	3350	7390	900	130
● 275/80R22.5	J/18	149/146L	14.0	8.25	1012	276	3250	7165	900	130	3000	6610	900	130
● 295/80R22.5	H/16	150/147M	15.0	9.00	1044	298	3350	7390	830	120	3075	6780	830	120
● 295/80R22.5	J/18	152/149M	15.0	9.00	1044	298	3550	7830	900	131	3250	7160	900	131
● 315/80R22.5	J/18	154/151M(156/153L)	15.0	9.00	1076	312	3750	8270	830	120	3450	7610	830	120

● Made in China



## CR976A

Size	LR / PR	Service index	Tread Depth (mm)	Standard Rim	Overall Diameter (mm)	Section Width (mm)	Max. Load Capacity at Cold Inflation Pressure							
							Single				Dual			
							(kg)	(lbs)	(kPa)	(psi)	(kg)	(lbs)	(kPa)	(psi)
● 385/65R22.5	J/18	158L(160K)	15.5	11.75	1072	389	4250	9370	850	125	-	-	-	-
● 385/65R22.5	L/20	160K(158L)	15.5	11.75	1072	389	4500	9920	900	130	-	-	-	-
● 425/65R22.5	L/20	165K	15.0	12.25	1124	430	5150	11400	830	120	-	-	-	-
● 445/65R22.5	L/20	169K	15.0	13.00	1150	444	5800	12775	900	130	-	-	-	-
● 9.00R20	H/16	144/142K	14.5	7.0	1019	259	2800	6175	900	130	2650	5840	900	130
● 10.00R20	H/16	146/143K	15.0	7.5	1054	278	3000	6610	830	120	2725	6005	830	120
● 10.00R20	J/18	149/146J	15.0	7.5	1054	278	3250	7160	930	135	3000	6610	930	135
● 11.00R20	J/18	152/149K	15.5	8.0	1085	293	3550	7825	930	135	3250	7165	930	135
● 12.00R20	J/18	154/151K	17.0	8.5	1125	315	3750	8270	830	120	3450	7610	830	120
● 12.00R20	L/20	156/153J	17.0	8.5	1125	315	4000	8820	900	131	3650	8050	900	131
● 215/75R17.5	H/16	135/133J	12.5	6.00	767	211	2180	4805	850	123	2060	4540	850	123
● 225/70R19.5	G/14	128/126M	13.0	6.75	811	226	1800	3970	760	110	1700	3750	760	110
● 245/70R19.5	G/14	133/131M	13.0	7.50	839	248	2060	4540	760	110	1950	4300	760	110
● 245/70R19.5	H/16	136/134M	13.0	7.50	839	248	2240	4940	830	120	2120	4675	830	120
● 265/70R19.5	H/16	140/138M	14.0	7.50	867	262	2500	5510	775	112	2360	5200	775	112
● 265/70R19.5	J/18	143/141J	14.0	7.50	867	262	2725	6005	850	123	2575	5675	850	123
● 11R22.5	G/14	144/142M	15.5	8.25	1054	279	2800	6175	720	105	2650	5840	720	105
● 11R22.5	H/16	148/145M	15.5	8.25	1054	279	3150	6940	850	123	2900	6390	850	123
● 11R22.5	J/18	149/146L	15.5	8.25	1054	279	3250	7160	930	135	3000	6610	930	135
● 12R22.5	J/18	152/149L	15.5	9.00	1085	300	3550	7830	930	135	3250	7160	930	135
● 255/70R22.5	H/16	140/137M	14.5	7.50	930	255	2500	5510	830	120	2300	5070	830	120
● 275/70R22.5	H/16	148/145M	14.0	8.25	958	276	3150	6940	900	130	2900	6395	900	130
● 275/80R22.5	H/16	149/146M	14.0	8.25	1012	276	3250	7165	850	123	3000	6610	850	123
● 295/80R22.5	H/16	150/147M	15.0	9.00	1044	298	3350	7390	830	120	3075	6780	830	120
● 295/80R22.5	J/18	152/149M	15.0	9.00	1044	298	3550	7830	900	131	3250	7160	900	131
● 315/80R22.5	J/18	154/151M(156/150L)	16.0	9.00	1076	312	3750	8270	830	120	3450	7610	830	120
● 315/80R22.5	L/20	157/154K	16.0	9.00	1076	312	4125	9090	900	130	3750	8270	900	130

● Made in China   ● Made in Thailand

- Multi-rib tread design with wide straight grooves for precise handling and outstanding traction
- Stone rejector platforms prevent stones from lodging in grooves and drilling into belts
- Shallower tread depth helps to resist tread squirm and irregular wear forces for exceptionally long mileage



● : Recommendable   ● : Available



- Improved close shoulder helps to improve even wear resulting in long tread life
- Straight simple rib pattern improves even wearing and efficient water evacuation for excellent wet traction and handling
- Cross rib sipes slice through water for solid control on wet roads



● : Recommendable   ● : Available

CR960A

Size	LR / PR	Service index	Tread Depth (mm)	Standard Rim	Overall Diameter (mm)	Section Width (mm)	Max. Load Capacity at Cold Inflation Pressure							
							Single				Dual			
							(kg)	(lbs)	(kPa)	(psi)	(kg)	(lbs)	(kPa)	(psi)
7.50R16	G/14	122/118L	12.0	6.00G	805	215	1500	3305	770	112	1320	2910	770	112
8.25R16	G/14	128/126L	13.0	6.50H	855	235	1800	3970	670	97	1700	3750	670	97
8.25R16	H/16	128/124L	13.0	6.50H	855	235	1800	3970	770	112	1600	3525	770	112
245/70R17.5	H/16	136/134M	13.0	7.50	789	248	2240	4940	850	123	2120	4675	850	123
245/70R17.5	J/18	143/141J	13.0	7.50	789	248	2725	6005	875	128	2575	5675	875	128
205/75R17.5	G/14	124/122M	12.0	6.00	753	205	1600	3525	750	109	1500	3305	750	109
215/75R17.5	H/16	135/133J	12.5	6.00	767	211	2180	4805	850	123	2060	4540	850	123
225/75R17.5	G/14	129/127M	12.5	6.75	783	226	1850	4080	725	105	1750	3860	725	105
235/75R17.5	G/14	132/130M	13.3	6.75	797	233	2000	4410	775	112	1900	4190	775	112
235/75R17.5	H/16	143/141J	13.3	6.75	797	233	2725	6005	875	128	2575	5675	875	128
8R19.5	F/12	124/122L	13.0	6.00	859	203	1600	3525	760	110	1500	3305	760	110
225/70R19.5	F/12	125/123M	13.0	6.75	811	226	1650	3640	660	95	1550	3415	660	95
245/70R19.5	G/14	133/131M	13.0	7.50	839	248	2060	4540	760	110	1950	4300	760	110
245/70R19.5	H/16	136/134M	13.0	7.50	839	248	2240	4940	830	120	2120	4675	830	120
265/70R19.5	H/16	140/138M	14.0	7.50	867	262	2500	5510	775	112	2360	5200	775	112
265/70R19.5	J/18	143/141J	14.0	7.50	867	262	2725	6005	850	123	2575	5675	850	123
285/70R19.5	H/16	146/144K	14.5	8.25	895	283	3000	6610	850	123	2800	6175	850	123
11R22.5	G/14	144/142L	14.2	8.25	1054	279	2800	6175	720	105	2650	5840	720	105
11R22.5	H/16	148/145M	14.2	8.25	1054	279	3150	6940	850	123	2900	6390	850	123
315/70R22.5	L/20	156/150L	15.0	9.00	1014	312	4000	8820	900	130	3350	7390	900	130
295/75R22.5	G/14	144/141L	14.2	9.00	1014	298	2800	6175	760	110	2575	5675	760	110
315/80R22.5	J/18	154/151M(156/150L)	15.0	9.00	1076	312	3750	8270	830	120	3450	7610	830	120
315/80R22.5	L/20	157/154K	15.0	9.00	1076	312	4125	9090	900	130	3750	8270	900	130
11R24.5	G/14	146/143L	14.2	8.25	1104	279	3000	6610	720	105	2725	6005	720	105
11R24.5	H/16	149/146L	14.2	8.25	1104	279	3250	7160	830	120	3000	6610	830	120
285/75R24.5	G/14	144/141L	14.2	8.25	1050	283	2800	6175	760	110	2575	5675	760	110

● Made in China   ● Made in Thailand



- Five ribs with four wide, straight grooves for precise handling and outstanding traction
- Decoupling tread design suitable for long-distance travel
- Applicable for steer and free-rolling wheel position



● : Recommendable   ● : Available

CR989

Size	LR / PR	Service index	Tread Depth (mm)	Standard Rim	Overall Diameter (mm)	Section Width (mm)	Max. Load Capacity at Cold Inflation Pressure							
							Single				Dual			
							(kg)	(lbs)	(kPa)	(psi)	(kg)	(lbs)	(kPa)	(psi)
11R22.5	G/14	144/142L	14.2	8.25	1054	279	2800	6175	720	105	2650	5840	720	105
11R22.5	H/16	148/145M	14.2	8.25	1054	279	3150	6940	850	123	2900	6390	850	123
295/75R22.5	G/14	144/141L	14.2	9.00	1014	298	2800	6175	760	110	2575	5675	760	110
11R24.5	G/14	146/143L	15.0	8.25	1104	279	3000	6610	720	105	2725	6005	720	105
11R24.5	H/16	149/146L	15.0	8.25	1104	279	3250	7160	830	120	3000	6610	830	120
285/75R24.5	G/14	144/141L	15.0	8.25	1050	283	2800	6175	760	110	2575	5675	760	110

● Made in China   ● Made in Thailand



# AD818

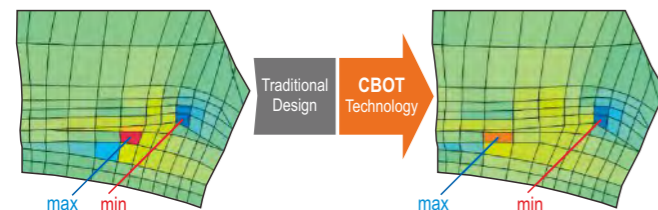


● : Recommendable



- 1 Classic block pattern, Better driving performance and grip performance
- 2 Shoulder reinforcement design, Enhance durability of use
- 3 Wider tread, Higher saturation, High mileage formula to increase tyre mileage

### Belt Durability



Optimal belt gap minimize shearing force between the belts with ZC-Rubber's CBOT technology

### Footprint



Finite element simulation analysis, More uniform distribution of tyre contact pressure, improve uneven wear performance

NEW



- Wider and deeper tread, Higher saturation, High mileage formula, super high mileage
- Directional design, Tortuous longitudinal main groove, more reasonable arrangement of pattern blocks, Provide powerful traction performance
- Application of Ultra High Strength Skeleton Materials, Improve tire safety and retread



● : Recommendable

# AD819

Size	LR / PR	Service index	Tread Depth (mm)	Standard Rim	Overall Diameter (mm)	Section Width (mm)	Max. Load Capacity at Cold Inflation Pressure							
							Single			Dual				
							(kg)	(lbs)	(kPa) (psi)	(kg)	(lbs)	(kPa) (psi)		
315/80R22.5	J/18	154/151M(156/153L)	24.0	9.00	1082	280	3750	8270	830	120	3450	7610	830	120

Made in Thailand



- Ultra deep tread with robust tread blocks features excellent wet traction and longer tyre life
- Drive axle applicable providing lateral stability and multiple retreads
- Latest carcass technology guarantees superior footprint and enhances damage resistance



● : Recommendable

# AD733

Size	LR / PR	Service index	Tread Depth (mm)	Standard Rim	Overall Diameter (mm)	Section Width (mm)	Max. Load Capacity at Cold Inflation Pressure							
							Single			Dual				
							(kg)	(lbs)	(kPa) (psi)	(kg)	(lbs)	(kPa) (psi)		
12R22.5	J/18	152/149L	23.0	9.00	1096	300	3550	7830	930	135	3250	7160	930	135
305/70R22.5	L/20	151/148M(153/150L)	22.0	9.00	1018	317	3450	7610	900	130	3150	6940	900	130
295/80R22.5	H/16	150/147M	20.6	9.00	1050	298	3350	7390	830	120	3075	6780	830	120
295/80R22.5	J/18	152/149M	20.6	9.00	1050	298	3550	7830	900	131	3250	7160	900	131

Made in China Made in Thailand

Size	LR / PR	Service index	Tread Depth (mm)	Standard Rim	Overall Diameter (mm)	Section Width (mm)	Max. Load Capacity at Cold Inflation Pressure							
							Single			Dual				
							(kg)	(lbs)	(kPa) (psi)	(kg)	(lbs)	(kPa) (psi)		
295/60R22.5	J/18	150/147K	20.0	9.00	932	292	3350	7390	900	131	3075	6780	900	131
315/60R22.5	L/20	154/150K(152/148L)	20.0	9.75	956	315	3750	8270	900	130	3350	7390	900	130
315/70R22.5	L/20	154/150L(152/148M)	21.0	9.00	1020	312	3750	8270	900	130	3350	7390	900	130
295/80R22.5	J/18	152/149M	20.6	9.00	1050	298	3550	7830	900	131	3250	7160	900	131
315/80R22.5	L/20	157/154K	22.5	9.00	1076	312	4125	9090	900	130	3750	8270	900	130

Made in China Made in Thailand



- Ultra deep tread with robust tread blocks features excellent wet traction and longer tyre life
- Drive axle applicable providing lateral stability and multiple retreads
- Latest carcass technology guarantees superior footprint and enhances damage resistance



• : Recommendable

## AD713/AD751

Size	LR / PR	Service index	Tread Depth (mm)	Standard Rim	Overall Diameter (mm)	Section Width (mm)	Max. Load Capacity at Cold Inflation Pressure							
							Single			Dual				
							(kg)	(lbs)	(kPa) (psi)	(kg)	(lbs)	(kPa) (psi)		
• 11R22.5(AD713)	G/14	144/142L	22.6	8.25	1065	279	2800	6175	720	105	2650	5840	720	105
• 11R22.5(AD713)	H/16	148/145L	22.6	8.25	1065	279	3150	6940	850	123	2900	6390	850	123
• 12R22.5(AD713/AD751)	J/18	152/149L	23.0	9.00	1096	300	3550	7830	930	135	3250	7160	930	135
• 275/70R22.5(AD713)	H/16	148/145L	18.5	8.25	958	276	3150	6940	900	130	2900	6395	900	130
• 295/80R22.5(AD713)	H/16	150/147M	20.0	9.00	1050	298	3350	7390	830	120	3075	6780	830	120
• 295/80R22.5(AD713)	J/18	152/149M	20.0	9.00	1050	298	3550	7830	900	131	3250	7160	900	131
• 315/80R22.5(AD713/AD751)	J/18	154/151M(156/150L)	22.5	9.00	1082	312	3750	8270	830	120	3450	7610	830	120
• 315/80R22.5(AD713)	L/20	157/154K	22.5	9.00	1076	312	4125	9090	900	130	3750	8270	900	130

• Made in China • Made in Thailand



- Strong center tread blocks provide excellent all-weather traction
- Special designed tread grooves reduce stone retention for extended tyre life
- Advanced tread compound provides remarkable performance for long haul service



• : Recommendable

## AD710/AD710A

Size	LR / PR	Service index	Tread Depth (mm)	Standard Rim	Overall Diameter (mm)	Section Width (mm)	Max. Load Capacity at Cold Inflation Pressure							
							Single			Dual				
							(kg)	(lbs)	(kPa) (psi)	(kg)	(lbs)	(kPa) (psi)		
• 11.00R20(AD710)	J/18	152/149K	19.0	8.0	1085	293	3550	7825	930	135	3250	7165	930	135
• 265/70R19.5(AD710A)	H/16	140/138M	16.0	7.50	867	262	2500	5510	775	112	2360	5200	775	112
• 265/70R19.5(AD710A)	J/18	143/141J	16.0	7.50	867	262	2725	6005	850	123	2575	5675	850	123
• 11R22.5(AD710A)	G/14	144/142L	19.6	8.25	1065	279	2800	6175	720	105	2650	5840	720	105
• 11R22.5(AD710A)	H/16	148/145L	19.6	8.25	1065	279	3150	6940	850	123	2900	6390	850	123
• 12R22.5(AD710A)	J/18	152/149L	20.0	9.00	1085	300	3550	7830	930	135	3250	7160	930	135
• 295/80R22.5(AD710A)	H/16	150/147M	20.6	9.00	1050	298	3350	7390	830	120	3075	6780	830	120
• 295/80R22.5(AD710A)	J/18	152/149M	20.6	9.00	1050	298	3550	7830	900	131	3250	7160	900	131
• 315/80R22.5(AD710A)	J/18	154/151M(156/150L)	20.6	9.00	1082	312	3750	8270	830	120	3450	7610	830	120
• 315/80R22.5(AD710A)	L/20	157/154K	20.6	9.00	1082	312	4125	9090	900	130	3750	8270	900	130

• Made in China



- Designed to provide exceptional Performance and Life in Linehaul Drive applications
- Large block design helps enhance handling and traction on all season highway conditions
- Tread bars maintain an even footprint and help prevent tyre squirm
- Cool running compound to promote longer life, Great CPK (Cost Per Kilometer) performer



• : Recommendable

## CM335/CM335A

Size	LR / PR	Service index	Tread Depth (mm)	Standard Rim	Overall Diameter (mm)	Section Width (mm)	Max. Load Capacity at Cold Inflation Pressure							
							Single			Dual				
							(kg)	(lbs)	(kPa) (psi)	(kg)	(lbs)	(kPa) (psi)		
• 495/45R22.5(CM335)	L/20	169K	19.0	17.00	1018	500	5800	12800	900	130	-	-	-	-
• 11R22.5(CM335)	G/14	144/142M	20.6	8.25	1065	279	2800	6175	720	105	2650	5840	720	105
• 11R22.5(CM335)	H/16	148/145M	20.6	8.25	1065	279	3150	6940	850	123	2900	6390	850	123
• 12R22.5(CM335A)	J/18	152/149L	20.0	9.00	1085	300	3550	7830	930	135	3250	7160	930	135
• 295/60R22.5(CM335)	J/18	150/147K	19.0	9.00	926	292	3350	7390	900	131	3075	6780	900	131
• 315/60R22.5(CM335)	L/20	154/150L(152/148M)	18.0	9.75	950	313	3750	8270	900	130	3350	7390	900	130
• 315/70R22.5(CM335)	L/20	154/150L	18.0	9.00	1020	312	3750	8270	900	130	3350	7390	900	130
• 295/80R22.5(CM335)	H/16	150/147M	18.0	9.00	1050	298	3350	7390	830	120	3075	6780	830	120
• 295/80R22.5(CM335)	J/18	152/149M	18.0	9.00	1050	298	3550	7830	900	131	3250	7160	900	131
• 315/80R22.5(CM335)	J/18	154/151M(156/150L)	20.6	9.00	1082	312	3750	8270	830	120	3450	7610	830	120
• 315/80R22.5(CM335)	L/20	157/154K	20.6	9.00	1082	312	4125	9090	900	130	3750	8270	900	130

• Made in China • Made in Thailand



- Wide and deep tread helps to promote even wear and long tread life resulting in low cost per mile
- Solid close shoulder ribs help to improve even wear
- Three deep grooves evacuate water efficiently for traction
- Strong casing resists cuts and punctures for enhanced toughness and long casing life



• : Recommendable

## CM983

Size	LR / PR	Service index	Tread Depth (mm)	Standard Rim	Overall Diameter (mm)	Section Width (mm)	Max. Load Capacity at Cold Inflation Pressure							
							Single			Dual				
							(kg)	(lbs)	(kPa) (psi)	(kg)	(lbs)	(kPa) (psi)		
• 10.00R20	H/16	146/143K	18.0	7.5	1054	278	3000	6610	830	120	2725	6005	830	120
• 10.00R20	J/18	149/146J	18.0	7.5	1054	278	3250	7160	930	135	3000	6610	930	135
• 225/70R19.5	G/14	128/126L	15.5	6.75	811	226	1800	3970	760	110	1700	3750	760	110
• 11R22.5	G/14	144/142L	20.6	8.25	1065	279	2800	6175	720	105	2650	5840	720	105
• 11R22.5	H/16	148/145L	20.6	8.25	1065	279	3150	6940	850	123	2900	6390	850	123
• 295/75R22.5	G/14	144/141L	20.6	9.00	1020	298	2800	6175	760	110	2575	5675	760	110
• 11R24.5	G/14	146/143L	20.6	8.25	1116	279	3000	6610	720	105	2725	6005	720	105
• 11R24.5	H/16	149/146L	20.6	8.25	1116	279	3250	7160	830	120	3000	6610	830	120
• 285/75R24.5	G/14	144/141L	20.6	8.25	1056	283	2800	6175	760	110	2575	5675	760	110

• Made in China • Made in Thailand



- Applicable for drive wheel position on long-distance and regional transportation
- Solid close shoulder design with special tread compound for enhanced traction
- Computer designed carcass reduces pressure on road and promotes even wear
- Improved casing structure provides remarkable footprint which guarantees longer tread life



• Recommendable

## AD757

Size	LR / PR	Service index	Tread Depth (mm)	Standard Rim	Overall Diameter (mm)	Section Width (mm)	Max. Load Capacity at Cold Inflation Pressure							
							Single			Dual				
							(kg)	(lbs)	(kPa) (psi)	(kg)	(lbs)	(kPa) (psi)		
11R22.5	G/14	144/142L	20.6	8.25	1065	279	2800	6175	720	105	2650	5840	720	105
11R22.5	H/16	146/143L	20.6	8.25	1065	279	3000	6610	720	105	2725	6005	720	105
11R22.5	H/16	148/145L	20.6	8.25	1065	279	3150	6940	850	123	2900	6390	850	123
295/75R22.5	G/14	144/141L	20.6	9.00	1020	298	2800	6175	760	110	2575	5675	760	110
11R24.5	G/14	146/143L	20.6	8.25	1116	279	3000	6610	720	105	2725	6005	720	105
11R24.5	H/16	149/146L	20.6	8.25	1116	279	3250	7160	830	120	3000	6610	830	120
285/75R24.5	G/14	144/141L	20.6	8.25	1056	283	2800	6175	760	110	2575	5675	760	110

• Made in China • Made in Thailand



- Premium wide base drive tyre suitable for long haul application.
- Robust tread blocks offer outstanding traction on both wet and dry road condition.
- Enhanced tyre carcass guarantees lateral stability, longer mileage and easy retreadability



• Recommendable

## AD781

Size	LR / PR	Service index	Tread Depth (mm)	Standard Rim	Overall Diameter (mm)	Section Width (mm)	Max. Load Capacity at Cold Inflation Pressure							
							Single			Dual				
							(kg)	(lbs)	(kPa) (psi)	(kg)	(lbs)	(kPa) (psi)		
445/50R22.5	L/20	161L	21.2	14.00	1018	445	4625	10200	830	120	-	-	-	-

• Made in China • Made in Thailand



- Designed to provide exceptional Performance and Life in Line haul Drive applications
- Shoulder reinforcement design, Enhance durability of use
- Special designed tread grooves reduce stone retention for extended tyre life



• Recommendable

## AD528

Size	LR / PR	Service index	Tread Depth (mm)	Standard Rim	Overall Diameter (mm)	Section Width (mm)	Max. Load Capacity at Cold Inflation Pressure							
							Single			Dual				
							(kg)	(lbs)	(kPa) (psi)	(kg)	(lbs)	(kPa) (psi)		
275/80R22.5	H/16	149/146M	18.0	8.25	1012	276	3250	7165	850	123	3000	6610	850	123
295/80R22.5	J/18	152/149M	18.0	9.00	1050	298	3550	7830	900	131	3250	7160	900	131

• Made in China



- Wide base super single tyre applicable for both steer and trailer service
- Computer designed tread structure provide even wear with less pressure on the road
- Long life tread compound with less heating enhance the original tread life
- Strong steel belt improves the casing durability and promote multiple retreads



• Recommendable

## AT566

Size	LR / PR	Service index	Tread Depth (mm)	Standard Rim	Overall Diameter (mm)	Section Width (mm)	Max. Load Capacity at Cold Inflation Pressure							
							Single			Dual				
							(kg)	(lbs)	(kPa) (psi)	(kg)	(lbs)	(kPa) (psi)		
445/50R22.5	L/20	161L	13.1	14.00	1018	445	4625	10200	830	120	-	-	-	-

• Made in China • Made in Thailand



- Wide base trailer tyre specially designed for trailer service
- Special compound and strong tyre casing promise excellent tread wear and longer mileage
- Straight grooves help to reduce rolling resistance and improve fuel efficiency



• Recommendable

## AT555

Size	LR / PR	Service index	Tread Depth (mm)	Standard Rim	Overall Diameter (mm)	Section Width (mm)	Max. Load Capacity at Cold Inflation Pressure							
							Single			Dual				
							(kg)	(lbs)	(kPa) (psi)	(kg)	(lbs)	(kPa) (psi)		
435/50R19.5	L/20	160J(156K)	13.5	14.00	931	438	4500	9920	900	131	-	-	-	-
385/55R19.5	H/16	156J	15.0	12.25	919	386	4000	8820	900	131	-	-	-	-
435/50R22.5	M/22	164J	12.8	14.00	1008	434	5000	11025	900	131	-	-	-	-

• Made in China • Made in Thailand



- Wide base trailer tyre specially designed for trailer service
- Special compound and strong tyre casing promise excellent tread wear and longer mileage
- Straight grooves help to reduce rolling resistance and improve fuel efficiency



• Recommendable

## AT556

Size	LR / PR	Service index	Tread Depth (mm)	Standard Rim	Overall Diameter (mm)	Section Width (mm)	Max. Load Capacity at Cold Inflation Pressure							
							Single			Dual				
							(kg)	(lbs)	(kPa) (psi)	(kg)	(lbs)	(kPa) (psi)		
445/45R19.5	L/20	160J(156K)	14.3	15.00	895	446	4500	9920	900	131	-	-	-	-

• Made in China • Made in Thailand



- Wide base multi-rib trailer tyres with durable compound to deliver excellent value
- Strong casing structure offers multiple retreads and lower total cost
- Improved tread design promises outstanding stability with optimized footprint and better tyre life



## CR931

Size	LR / PR	Service index	Tread Depth (mm)	Standard Rim	Overall Diameter (mm)	Section Width (mm)	Max. Load Capacity at Cold Inflation Pressure							
							Single				Dual			
							(kg)	(lbs)	(kPa)	(psi)	(kg)	(lbs)	(kPa)	(psi)
🇨🇳🇹🇭 385/65R22.5	J/18	158L(160K)	15.5	11.75	1072	389	4250	9370	850	125	-	-	-	-
🇨🇳🇹🇭 385/65R22.5	L/20	160K(158L)	15.5	11.75	1072	389	4500	9920	900	130	-	-	-	-
🇹🇭 425/65R22.5	L/20	165K	15.0	12.25	1124	430	5150	11400	830	120	-	-	-	-
🇹🇭 445/65R22.5	L/20	169K	15.0	13.00	1150	444	5800	12775	900	130	-	-	-	-

🇨🇳 Made in China 🇹🇭 Made in Thailand



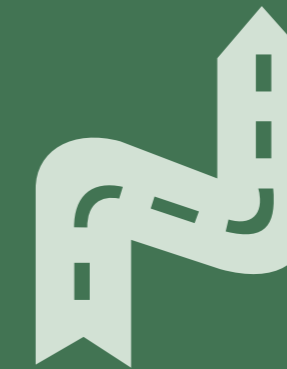
- Cool-running compound construction reduces the energy generated within the tread for low rolling resistance
- Shallow tread depth promotes low rolling resistance for fuel economy and long even wear
- Four wide grooves provide all-season performance on wet and dry roads



## CR915

Size	LR / PR	Service index	Tread Depth (mm)	Standard Rim	Overall Diameter (mm)	Section Width (mm)	Max. Load Capacity at Cold Inflation Pressure							
							Single				Dual			
							(kg)	(lbs)	(kPa)	(psi)	(kg)	(lbs)	(kPa)	(psi)
🇨🇳🇹🇭 11R22.5	G/14	144/142M	11.0	8.25	1054	279	2800	6175	720	105	2650	5840	720	105
🇨🇳🇹🇭 11R22.5	H/16	148/145M	11.0	8.25	1054	279	3150	6940	850	123	2900	6390	850	123
🇹🇭 255/70R22.5	H/16	140/137L	11.0	7.50	930	255	2500	5510	830	120	2300	5070	830	120
🇨🇳🇹🇭 295/75R22.5	G/14	144/141M	11.0	9.00	1014	298	2800	6175	760	110	2575	5675	760	110

🇨🇳 Made in China 🇹🇭 Made in Thailand



## REGIONAL

Shorter journey with frequent braking, accelerating and turning

Improved road grip with maximum mileage

Exceptional tough type

# REGIONAL

## AZ850



● : Recommendable



Brand new flagship tyre for regional application with Less uneven wear and enhanced durability based on PSCT GSCT technology minimizes the occurrence of groove cracking and prolongs tyre life

### STEER/TRAILER



AZ850 AT530 AZ828 CM958 AZ676 AZ534+ MZ679 AZ531 AZ675 AZ712



MD752 AZ655S AZ650 CM772 CM912 AZ589 AZ686 AZ697 CR907 CR950

### DRIVE



AD756 CM980 CM987/E CM986

### TRAILER



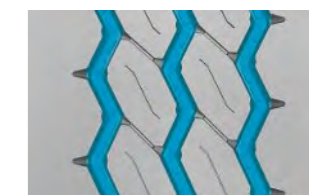
AT532 AT512 AT560



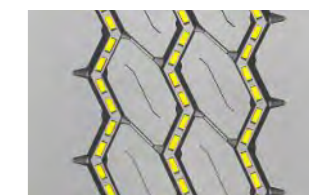
Tubeless Tube



Wider and deeper tread helps provide long tread life on various road surface



3 zigzag grooves and multi-angular sipes Improve traction and braking performance



Stone ejector in the groove protect belt from stone drilling

Size	LR / PR	Service index	Tread Depth (mm)	Standard Rim	Overall Diameter (mm)	Section Width (mm)	Max. Load Capacity at Cold Inflation Pressure							
							Single			Dual				
							(kg)	(lbs)	(kPa) (psi)	(kg)	(lbs)	(kPa) (psi)		
7.00R16	G/14	118/114M	10.0	6.50H	855	235	1800	2910	770	112	1180	2600	770	112
7.50R16	G/14	122/118L	13.0	6.00G	215	805	1500	3305	770	112	1320	2910	770	112
8.25R16	H/16	128/124L	15.0	6.50H	235	855	1800	3970	770	112	1600	3525	770	112
8.25R20	H/16	139/137K	15.0	6.5	974	236	2430	5360	930	135	2300	5070	930	135
9.00R20	H/16	144/142K	15.5	7.0	1019	259	2800	6175	900	130	2650	5840	900	130
10.00R20	J/18	149/146J	15.5	7.5	1054	278	3250	7160	930	135	3000	6610	930	135
11.00R20	J/18	152/149K	16.5	8.0	1085	293	3550	7825	930	135	3250	7165	930	135
12.00R20	J/18	154/151K	17.5	8.5	1125	315	3750	8270	830	120	3450	7610	830	120
12.00R20	L/20	156/153J	17.5	8.5	1125	315	4000	8820	900	131	3650	8050	900	131
265/55R19.5	G/14	132/130J	12.0	8.25	262	867	2000	4400	760	110	1900	4190	760	110
11R22.5	H/16	148/145L	17.0	8.25	1054	279	3150	6940	850	123	2900	6390	850	123
12R22.5	J/18	152/149L	18.0	9.00	1085	300	3550	7830	930	135	3250	7160	930	135
13R22.5	J/18	156/151K	20.0	9.75	1124	320	4000	8820	875	128	3450	7610	875	128
295/80R22.5	J/18	152/149M	18.0	9.00	1050	298	3550	7830	900	131	3250	7160	900	131

● Made in China ● Made in Thailand



NEW



- Strong tyre carcass offers lateral durability for regional application
- High saturation pattern design, improving tyre wear resistance, significantly increase vehicle mileage
- Finite element simulation analysis, More uniform distribution of tire contact pressure, improve uneven wear performance



AT530

● : Recommendable ● : Available

Size	LR / PR	Service index	Tread Depth (mm)	Standard Rim	Overall Diameter (mm)	Section Width (mm)	Max. Load Capacity at Cold Inflation Pressure							
							Single			Dual				
							(kg)	(lbs)	(kPa) (psi)	(kg)	(lbs)	(kPa) (psi)		
● 205/75R17.5	G/14	124/122M	13.0	6.00	753	205	1600	3525	750	109	1500	3305	750	109
● 215/75R17.5	H/16	135/133J	14.0	6.00	767	211	2180	4805	850	123	2060	4540	850	123
● 235/75R17.5	H/16	143/141J	13.0	6.75	797	233	2725	6005	875	128	2575	5675	875	128
● 245/70R17.5	J/18	143/141J	13.5	7.50	789	248	2725	6005	875	128	2575	5675	875	128
● 245/70R19.5	J/18	141/140J	14.0	7.50	839	248	2575	5675	850	123	2500	5510	850	123
● 265/70R19.5	J/18	143/141J	14.0	7.50	867	262	2725	6005	850	123	2575	5675	850	123

● Made in China



- 3 circumferential grooves ensures good directional stability, even wear and smooth ride
- Gutter bottom adhesive nail design, Improve stone removal performance
- Improved tread compound helps resist tears and ensure good mileage in on and off road use



AZ828

● : Recommendable ● : Available

Size	LR / PR	Service index	Tread Depth (mm)	Standard Rim	Overall Diameter (mm)	Section Width (mm)	Max. Load Capacity at Cold Inflation Pressure							
							Single			Dual				
							(kg)	(lbs)	(kPa) (psi)	(kg)	(lbs)	(kPa) (psi)		
● 12.00R20	L/20	156/153J	17.5	8.5	1125	315	4000	8820	900	131	3650	8050	900	131
● 12.00R24	L/20	160/157K	15.5	8.5	1210	245	4500	9920	900	131	4125	9090	900	131
● 325/95R24	L/20	164/162J	15.5	9.00	1228	325	5000	11030	900	131	4750	10470	900	131

● Made in China ● Made in Thailand

Tube

Tubeless



- Multiple gripping edges slice through water and road films for a solid grip
- Four wide continuous rib design help resist tread squirm and heel-and-toe wear for exceptionally long tread life
- Three circumferential grooves help deliver all-season traction on wet or dry road
- Closed shoulder design helps promote even wear throughout the tyre life



● : Recommendable

CM958

Size	LR / PR	Service index	Tread Depth (mm)	Standard Rim	Overall Diameter (mm)	Section Width (mm)	Max. Load Capacity at Cold Inflation Pressure							
							Single			Dual				
							(kg)	(lbs)	(kPa) (psi)	(kg)	(lbs)	(kPa) (psi)		
● 7.50R15	H/16	135/133J	13.0	6.0	780	212	2180	4806	850	123	2060	4541	850	123
● 8.25R15	J/18	143/141L	14.0	6.50	836	234	2725	6005	850	123	2575	5675	850	123
● 7.00R16	G/14	118/114L	14.0	5.50F	785	200	1320	2910	770	112	1180	2600	770	112
● 7.50R16	G/14	122/118L	15.5	6.00G	815	215	1500	3305	770	112	1320	2910	770	112
● 8.25R16	H/16	128/124L	16.0	6.50H	865	235	1800	3970	770	112	1600	3525	770	112
● 8.25R20	H/16	139/137K	14.0	6.5	974	236	2430	5360	930	135	2300	5070	930	135
● 9.00R20	H/16	144/142K	16.0	7.0	1019	259	2800	6175	900	130	2650	5840	900	130
● 10.00R20	H/16	146/143K	15.0	7.5	1054	278	3000	6610	830	120	2725	6005	830	120
● 10.00R20	J/18	149/146J	15.0	7.5	1054	278	3250	7160	930	135	3000	6610	930	135
● 11.00R20	J/18	152/149K	16.0	8.0	1085	293	3550	7825	930	135	3250	7165	930	135
● 12.00R20	J/18	154/151K	17.0	8.5	1125	315	3750	8270	830	120	3450	7610	830	120
● 215/75R17.5	H/16	135/133J	13.0	6.00	767	211	2180	4805	850	123	2060	4540	850	123
● 225/80R17.5	10PR	123/122L	14.0	6.75	805	226	1550	3415	700	102	1500	3305	700	102
● 8R22.5	G/14	130/128M	13.5	6.00	935	203	1900	4190	830	120	1800	3970	830	120
● 9R22.5	G/14	136/134M	14.0	6.75	974	229	2240	4940	830	120	2120	4675	830	120
● 10R22.5	H/16	144/142M	15.0	7.50	1019	254	2800	6175	900	130	2650	5840	900	130
● 11R22.5	G/14	144/142M	17.5	8.25	1054	279	2800	6175	720	105	2650	5840	720	105
● 11R22.5	H/16	148/145L	17.5	8.25	1054	279	3150	6940	850	123	2900	6390	850	123
● 12R22.5	J/18	152/149L	18.0	9.00	1085	300	3550	7830	930	135	3250	7160	930	135
● 13R22.5	J/18	156/150K	20.0	9.75	1124	320	4000	8820	875	128	3350	7390	875	128
● 255/70R22.5	H/16	140/137L	15.0	7.50	930	255	2500	5510	830	120	2300	5070	830	120
● 275/70R22.5	H/16	148/145K	16.0	8.25	958	276	3150	6940	900	130	2900	6395	900	130
● 295/80R22.5	H/16	150/147M	18.0	9.00	1044	298	3350	7390	830	120	3075	6780	830	120
● 295/80R22.5	J/18	152/149M	18.0	9.00	1044	298	3550	7830	900	131	3250	7160	900	131
● 315/80R22.5	J/18	154/151M(156/150L)	18.0	9.00	1082	312	3750	8270	830	120	3450	7610	830	120
● 315/80R22.5	L/20	157/154K	18.0	9.00	1082	312	4125	9090	900	130	3750	8270	900	130
● 315/80R22.5	M/22	164/158K	18.0	9.00	1082	312	5000	11000	950	138	4250	9370	950	138

● Made in China ● Made in Thailand



- 3 circumferential grooves ensures good directional stability, even wear and smooth ride
- Heavy siping provides good braking stability and high lateral traction on wet and dry surface
- Improved tread compound helps resist tears and ensure good mileage in on and off road use
- Sidewall reinforcing ribs protects against impacts and scuffing



## AZ676

• : Recommendable

Size	LR / PR	Service index	Tread Depth (mm)	Standard Rim	Overall Diameter (mm)	Section Width (mm)	Max. Load Capacity at Cold Inflation Pressure							
							Single				Dual			
							(kg)	(lbs)	(kPa)	(psi)	(kg)	(lbs)	(kPa)	(psi)
• 6.50R16	F/12	110/105L	9.5	5.50F	750	185	1060	2335	670	97	925	2040	670	97
• 7.00R16	G/14	118/114L	11.0	5.50F	775	200	1320	2910	770	112	1180	2600	770	112
• 8.25R16	H/16	128/124L	14.0	6.50H	855	235	1800	3970	770	112	1600	3525	770	112
• 8.25R20	H/16	139/137K	15.0	6.5	974	236	2430	5360	930	135	2300	5070	930	135
• 9.00R20	H/16	144/142K	15.5	7.0	1019	259	2800	6175	900	130	2650	5840	900	130
• 10.00R20	H/16	146/143K	16.0	7.5	1054	278	3000	6610	830	120	2725	6005	830	120
• 10.00R20	J/18	149/146J	16.0	7.5	1054	278	3250	7160	930	135	3000	6610	930	135
• 11.00R20	J/18	152/149K	16.0	8.0	1085	293	3550	7825	930	135	3250	7165	930	135
• 12.00R20	J/18	154/151K	17.5	8.5	1125	315	3750	8270	830	120	3450	7610	830	120
• 12.00R20	L/20	156/153J	17.5	8.5	1125	315	4000	8820	900	131	3650	8050	900	131
• 11R22.5	G/14	144/142M	16.8	8.25	1054	279	2800	6175	720	105	2650	5840	720	105
• 11R22.5	H/16	148/145M	16.8	8.25	1054	279	3150	6940	850	123	2900	6390	850	123
• 11R22.5	J/18	149/146L	16.8	8.25	1054	279	3250	7160	930	135	3000	6610	930	135
• 12R22.5	J/18	152/149L	16.0	9.00	1085	300	3550	7830	930	135	3250	7160	930	135
• 295/80R22.5	H/16	150/147M	16.0	9.00	1044	298	3350	7390	830	120	3075	6780	830	120
• 295/80R22.5	J/18	152/149L	16.0	9.00	1044	298	3550	7830	900	131	3250	7160	900	131
• 315/80R22.5	J/18	154/151M(156/150L)	16.0	9.00	1076	312	3750	8270	830	120	3450	7610	830	120

• Made in China    • Made in Thailand



- Wide and deep tread enhance driving stability and mileage on all kinds of roads
- Special tread compound and carcass help to guarantee long tyre life and better retreadability
- Zig-zag main grooves provide superb traction level



• : Recommendable

## AZ534/AZ534+

Size	LR / PR	Service index	Tread Depth (mm)	Standard Rim	Overall Diameter (mm)	Section Width (mm)	Max. Load Capacity at Cold Inflation Pressure							
							Single				Dual			
							(kg)	(lbs)	(kPa)	(psi)	(kg)	(lbs)	(kPa)	(psi)
• 225/80R17.5(AZ534)	H/16	123/122L	15.8	6.75	805	226	1550	3415	700	102	1500	3305	700	102
• 245/70R19.5(AZ534)	G/14	133/131M	16.0	7.50	839	248	2060	4540	760	110	1950	4300	760	110
• 245/70R19.5(AZ534)	H/16	136/134M	16.0	7.50	839	248	2240	4940	830	120	2120	4675	830	120
• 265/70R19.5(AZ534)	H/16	140/138M	16.0	7.50	867	262	2500	5510	775	112	2360	5200	775	112
• 265/70R19.5(AZ534)	J/18	143/141J	16.0	7.50	867	262	2725	6005	850	123	2575	5675	850	123
• 11R22.5(AZ534+)	G/14	144/142L	17.0	8.25	1054	279	2800	6175	720	105	2650	5840	720	105
• 11R22.5(AZ534+)	H/16	148/145L	17.0	8.25	1054	279	3150	6940	850	123	2900	6390	850	123
• 275/80R22.5(AZ534+)	H/16	149/146L	18.0	8.25	1012	276	3250	7165	850	123	3000	6610	850	123
• 295/80R22.5(AZ534+)	H/16	150/147M	18.0	9.00	1044	298	3350	7390	830	120	3075	6780	830	120
• 295/80R22.5(AZ534+)	J/18	152/149M	18.0	9.00	1044	298	3550	7830	900	131	3250	7160	900	131

• Made in China



- Four longitudinal zigzag pattern grooves design, Improve the wet skid resistance and handling performance of the vehicle's driving direction
- Widening of tyre driving surface, Sturdy appearance, Optimization design of ditch block ratio, Effectively improving shoulder grinding phenomenon, Improve wear resistance
- Design of middle groove adhesive nails, Improving the problem of stone inclusion in the middle due to high stress
- Tyre tread formula upgrade, Wear resistance and crack resistance improved by 15%



• : Recommendable

## AZ531

Size	LR / PR	Service index	Tread Depth (mm)	Standard Rim	Overall Diameter (mm)	Section Width (mm)	Max. Load Capacity at Cold Inflation Pressure							
							Single				Dual			
							(kg)	(lbs)	(kPa)	(psi)	(kg)	(lbs)	(kPa)	(psi)
• 215/75R17.5	H/16	135/133J	13.5	6.00	767	211	2180	4805	850	123	2060	4540	850	123
• 235/75R17.5	H/16	143/141J	13.5	6.75	797	233	2725	6005	875	128	2575	5675	875	128

• Made in China



- Wide tread width offers more stable driving feel
- Innovative stone rejctor reduces stone retention and maximize casing durability
- slanted groove design helps to prevent chunking



## MZ679

Size	LR / PR	Service index	Tread Depth (mm)	Standard Rim	Overall Diameter (mm)	Section Width (mm)	Max. Load Capacity at Cold Inflation Pressure							
							Single			Dual				
							(kg)	(lbs)	(kPa) (psi)	(kg)	(lbs)	(kPa) (psi)		
305/70R19.5	J/18	146/143L	14.5	9.00	923	305	3000	6610	830	120	2725	6005	830	120

• Made in China



- High saturation pattern design, Improving tire wear resistance, Significantly increase vehicle mileage
- The zig-zag rib provide outstanding traction on regional application
- Special tread compounding ensuring longer wear life and service life



## AZ712

Size	LR / PR	Service index	Tread Depth (mm)	Standard Rim	Overall Diameter (mm)	Section Width (mm)	Max. Load Capacity at Cold Inflation Pressure							
							Single			Dual				
							(kg)	(lbs)	(kPa) (psi)	(kg)	(lbs)	(kPa) (psi)		
185/85R16	F/12	111/109N	14.0	5J	720	184	1090	2405	600	87	1030	2270	600	87
195/85R16	F/12	114/110L	10.0	5 1/2 J	738	196	1180	2600	650	94	1060	2335	650	94
205/85R16	F/12	117/115L	12.5	5 1/2 J	754	203	1285	2835	600	87	1215	2680	600	87

• Made in China



- Wide tread width offers more stable driving feel
- Extra deep tread for long tyre life and high pattern volume
- The zig-zag rib provide outstanding traction on regional application



## AZ675

Size	LR / PR	Service index	Tread Depth (mm)	Standard Rim	Overall Diameter (mm)	Section Width (mm)	Max. Load Capacity at Cold Inflation Pressure							
							Single			Dual				
							(kg)	(lbs)	(kPa) (psi)	(kg)	(lbs)	(kPa) (psi)		
305/70R22.5	L/20	153/150J	19.0	9.00	1018	317	3650	8050	900	130	3350	7390	900	130

• Made in China



- All wheel position applicable for long or medium distance travel
- Special tread compounding ensuring longer wear life and service life
- Improved cut resistance helping to provide better tyre performance



## MD752

Size	LR / PR	Service index	Tread Depth (mm)	Standard Rim	Overall Diameter (mm)	Section Width (mm)	Max. Load Capacity at Cold Inflation Pressure							
							Single			Dual				
							(kg)	(lbs)	(kPa) (psi)	(kg)	(lbs)	(kPa) (psi)		
12.00R24	L/20	160/157K	16.0	8.5	1226	315	4500	9920	900	131	4125	9090	900	131
12R22.5	J/18	152/149K	18.0	9.00	1085	300	3550	7830	930	135	3250	7160	930	135
315/80R22.5	J/18	154/151M(156/150L)	18.0	9.00	1082	312	3750	8270	830	120	3450	7610	830	120
315/80R22.5	L/20	157/154K	18.0	9.00	1082	312	4125	9090	900	130	3750	8270	900	130

• Made in China



- Three zigzag wide grooves channel water out for excellent traction on wet roads
- Shoulder slotting, Beneficial for tyre heat dissipation, Improve tyre service life
- Stone ejector in the groove protect belt from stone drilling



• : Recommendable    • : Available

## AZ655S

Size	LR / PR	Service index	Tread Depth (mm)	Standard Rim	Overall Diameter (mm)	Section Width (mm)	Max. Load Capacity at Cold Inflation Pressure							
							Single			Dual				
							(kg)	(lbs)	(kPa) (psi)	(kg)	(lbs)	(kPa) (psi)		
315/80R22.5	J/18	154/151M(156/153L)	18.0	9.00	1082	312	3750	8270	830	120	3450	7610	830	120

• Made in China    • Made in Thailand



- Four ribs ensure even wear and comfortable riding
- Siped zig-zag rib helps improve traction on wet and muddy surface
- Deep circumferential grooves improves efficient water evacuation, lateral stability, and long tyre life



• : Recommendable    • : Available

## CM912/CM912A

Size	LR / PR	Service index	Tread Depth (mm)	Standard Rim	Overall Diameter (mm)	Section Width (mm)	Max. Load Capacity at Cold Inflation Pressure							
							Single			Dual				
							(kg)	(lbs)	(kPa) (psi)	(kg)	(lbs)	(kPa) (psi)		
12.00R24(CM912)	L/20	160/157K	19.0	8.5	1226	315	4500	9920	900	131	4125	9090	900	131
325/95R24(CM912A)	M/22	162/160K	17.0	9.00	1228	325	4750	10470	850	123	4500	9920	850	123

• Made in China    • Made in Thailand



- Wide, deep tread helps provide long tread life in regional conditions
- Crown winding technology, Increase tyre safety performance, Improve using life



• : Recommendable    • : Available

## AZ650

Size	LR / PR	Service index	Tread Depth (mm)	Standard Rim	Overall Diameter (mm)	Section Width (mm)	Max. Load Capacity at Cold Inflation Pressure							
							Single			Dual				
							(kg)	(lbs)	(kPa) (psi)	(kg)	(lbs)	(kPa) (psi)		
385/65R22.5	N/24	164K	18.0	11.75	1072	389	5000	11030	930	135	-	-	-	-

• Made in China



- Three zigzag wide grooves channel water out for excellent traction on wet roads
- Stone ejector prevent tread damage from stone drilling
- Low rolling resistance tread compound guarantees less fuel consumption for long tread life
- Tough steel belt and carcass helps protect the casing from impacts and penetrations for excellent durability



• : Recommendable

## AZ589

Size	LR / PR	Service index	Tread Depth (mm)	Standard Rim	Overall Diameter (mm)	Section Width (mm)	Max. Load Capacity at Cold Inflation Pressure							
							Single			Dual				
							(kg)	(lbs)	(kPa) (psi)	(kg)	(lbs)	(kPa) (psi)		
7.50R17	E/10	116/114L	12.0	6.00J	850	396	1270	2800	520	75	1180	2600	520	75

• Made in China



- Wide, deep tread helps provide long tread life in regional conditions
- Zig-zag ribs ensure even wear and grip on wet, dry and snowy roads
- Stone rejector reduces stone retention and maximize casing durability



• : Recommendable    • : Available

## CM772

Size	LR / PR	Service index	Tread Depth (mm)	Standard Rim	Overall Diameter (mm)	Section Width (mm)	Max. Load Capacity at Cold Inflation Pressure							
							Single			Dual				
							(kg)	(lbs)	(kPa) (psi)	(kg)	(lbs)	(kPa) (psi)		
325/95R24	M/22	162/160K	20.0	9.00	1228	325	4750	10470	850	123	4500	9920	850	123

• Made in China



- Wide tread width offers more stable driving feel
- Extra deep tread for long tyre life and high pattern volume
- The zig-zag rib provide outstanding traction on regional application
- Cross rib sipes slice through water for solid control on wet roads



• : Recommendable

## AZ686

Size	LR / PR	Service index	Tread Depth (mm)	Standard Rim	Overall Diameter (mm)	Section Width (mm)	Max. Load Capacity at Cold Inflation Pressure							
							Single				Dual			
							(kg)	(lbs)	(kPa)	(psi)	(kg)	(lbs)	(kPa)	(psi)
7.00R15	F/12	113/109L	12.0	5.50F	750	200	1150	2535	670	97	1030	2270	670	97
6.50R16	F/12	110/105L	11.0	5.50F	750	185	1060	2336	670	97	925	2038	670	97
7.00R16	G/14	118/114L	12.0	5.50F	200	775	1320	2910	770	112	1180	2600	770	112
7.50R16	G/14	122/118L	13.0	6.00G	215	805	1500	3305	770	112	1320	2910	770	112
8.25R16	J/18	134/129K	14.0	6.50H	857	235	2120	4675	850	123	1800	4080	850	123
10.00R20	H/16	146/143K	15.0	7.5	1054	278	3000	6610	830	120	2725	6005	830	120
10.00R20	J/18	149/146J	15.0	7.5	278	1054	3250	7160	930	135	3000	6610	930	135

• Made in China    • Made in Thailand



- Improved closed shoulder helps to improved even wear resulting in long tread life
- Cross rib sipes slice through water for solid control on wet roads



• : Recommendable

## CR907

Size	LR / PR	Service index	Tread Depth (mm)	Standard Rim	Overall Diameter (mm)	Section Width (mm)	Max. Load Capacity at Cold Inflation Pressure							
							Single				Dual			
							(kg)	(lbs)	(kPa)	(psi)	(kg)	(lbs)	(kPa)	(psi)
7.00R15	F/12	113/109L	11.0	5.50F	750	200	1150	2534	670	97	1030	2270	670	97
6.50R16	F/12	110/105L	9.5	5.50F	750	185	1060	2336	670	97	925	2038	670	97
7.00R16	G/14	118/114L	11.0	5.50F	775	200	1320	2908	770	111	1180	2600	770	111
7.50R16	G/14	122/118L	12.0	6.00G	805	215	1500	3305	770	111	1320	2909	770	111

• Made in China    • Made in Thailand



- Wide tread width offers more stable driving feel
- Extra deep tread for long tyre life and high pattern volume
- The zig-zag rib provide outstanding traction on regional application



• : Recommendable

## AZ697

Size	LR / PR	Service index	Tread Depth (mm)	Standard Rim	Overall Diameter (mm)	Section Width (mm)	Max. Load Capacity at Cold Inflation Pressure							
							Single				Dual			
							(kg)	(lbs)	(kPa)	(psi)	(kg)	(lbs)	(kPa)	(psi)
7.00R15	F/12	113/109L	12.0	5.50F	750	200	1150	2535	670	97	1030	2270	670	97
6.50R16	F/12	110/105L	11.0	5.50F	750	185	1060	2336	670	97	925	2038	670	97
7.00R16	G/14	118/114L	12.0	5.50F	200	775	1320	2910	770	112	1180	2600	770	112
7.50R16	G/14	122/118L	13.0	6.00G	215	805	1500	3305	770	112	1320	2910	770	112
8.25R16	J/18	134/129K	14.0	6.50H	857	235	2120	4675	850	123	1800	4080	850	123

• Made in China    • Made in Thailand



- Tread pattern provides extended even wear and offers excellent wet traction
- Advanced compound promotes mileage before removal for long tyre life



• : Recommendable

## CR950

Size	LR / PR	Service index	Tread Depth (mm)	Standard Rim	Overall Diameter (mm)	Section Width (mm)	Max. Load Capacity at Cold Inflation Pressure							
							Single				Dual			
							(kg)	(lbs)	(kPa)	(psi)	(kg)	(lbs)	(kPa)	(psi)
7.50R16	G/14	122/118L	12.0	6.00G	805	215	1500	3305	770	112	1320	2910	770	112
8.25R16	H/16	128/124L	14.0	6.50H	855	235	1800	3970	770	112	1600	3525	770	112
7.50R20	G/14	130/128L	13.0	6.0	935	215	1900	4190	830	120	1800	3970	830	120
8.25R20	H/16	139/137K	14.0	6.5	974	236	2430	5360	930	135	2300	5070	930	135
8.5R17.5	F/12	121/120L	12.0	6.00	802	215	1450	3200	625	91	1400	3090	625	91
9.5R17.5	G/14	129/127L	13.0	6.75	842	240	1850	4080	750	109	1750	3860	750	109
9.5R17.5	H/16	143/141M	13.0	6.75	842	240	2725	6005	875	128	2575	5675	875	128
215/75R17.5	H/16	135/133J	13.0	6.00	767	211	2180	4805	850	123	2060	4540	850	123
8R22.5	G/14	130/128M	13.5	6.00	935	203	1900	4190	830	120	1800	3970	830	120
9R22.5	G/14	136/134M	14.0	6.75	974	229	2240	4940	830	120	2120	4675	830	120
10R22.5	H/16	144/142M	15.0	7.50	1019	254	2800	6175	900	130	2650	5840	900	130

• Made in China    • Made in Thailand



- Enhanced casing and deep tread guarantees longer mileage
- Strong biting edge and open shoulder produce powerful traction
- Stone rejector reduces stone retention and maximize casing durability
- Suitable for single axle vehicles



• : Recommendable

## AD756

Size	LR / PR	Service index	Tread Depth (mm)	Standard Rim	Overall Diameter (mm)	Section Width (mm)	Max. Load Capacity at Cold Inflation Pressure							
							Single				Dual			
							(kg)	(lbs)	(kPa)	(psi)	(kg)	(lbs)	(kPa)	(psi)
• 11R22.5	G/14	144/142L	22.6	8.25	1065	279	2800	6175	720	105	2650	5840	720	105
• 11R22.5	H/16	148/145L	22.6	8.25	1065	279	3150	6940	850	123	2900	6390	850	123
• 11R24.5	G/14	146/143L	22.6	8.25	1116	279	3000	6610	720	105	2725	6005	720	105
• 11R24.5	H/16	149/146L	22.6	8.25	1116	279	3250	7160	830	120	3000	6610	830	120

• Made in China



- Wide and deep tread enhances cost per mileage, driving stability and traction on highway application
- Aggressive traction blocks helps to increase wet traction
- Strong open shoulder produces powerful traction
- Suitable for single axle vehicles



• : Recommendable

## CM980

Size	LR / PR	Service index	Tread Depth (mm)	Standard Rim	Overall Diameter (mm)	Section Width (mm)	Max. Load Capacity at Cold Inflation Pressure							
							Single				Dual			
							(kg)	(lbs)	(kPa)	(psi)	(kg)	(lbs)	(kPa)	(psi)
• 11R22.5	G/14	144/142L	20.6	8.25	1065	279	2800	6175	720	105	2650	5840	720	105
• 11R22.5	H/16	148/145L	20.6	8.25	1065	279	3150	6940	850	123	2900	6390	850	123
• 295/75R22.5	G/14	144/141L	20.6	9.00	1020	298	2800	6175	760	110	2575	5675	760	110
• 11R24.5	G/14	146/143L	20.6	8.25	1116	279	3000	6610	720	105	2725	6005	720	105
• 11R24.5	H/16	149/146L	20.6	8.25	1116	279	3250	7160	830	120	3000	6610	830	120
• 285/75R24.5	G/14	144/141L	20.6	8.25	1056	283	2800	6175	760	110	2575	5675	760	110

• Made in China • Made in Thailand



- Non-directional tread design for easy operating
- Open lug design helps provide traction in wet or snowy conditions



• : Recommendable

## CM987/CM987E/CM987PRO

Size	LR / PR	Service index	Tread Depth (mm)	Standard Rim	Overall Diameter (mm)	Section Width (mm)	Max. Load Capacity at Cold Inflation Pressure							
							Single				Dual			
							(kg)	(lbs)	(kPa)	(psi)	(kg)	(lbs)	(kPa)	(psi)
• 8.25R16(CM987)	H/16	128/124L	14.0	6.50H	855	235	1800	3969	770	111	1600	3529	770	111
• 9.00R16(CM987)	G/14	131/126L	15.0	6.50H	900	255	1950	4300	670	97	1700	3750	670	97
• 8.25R20(CM987E)	H/16	139/137K	19.0	6.5	974	236	2430	5355	930	135	2300	5070	930	135
• 9.00R20(CM987)	H/16	144/142K	16.0	7.0	1019	259	2800	6175	900	130	2650	5840	900	130
• 9.00R20(CM987E)	H/16	144/142K	20.0	7.0	1019	259	2800	6175	900	130	2650	5840	900	130
• 10.00R20(CM987)	H/16	146/143K	17.0	7.5	1054	278	3000	6610	830	120	2725	6005	830	120
• 10.00R20(CM987)	J/18	149/146J	17.0	7.5	1054	278	3250	7160	930	135	3000	6610	930	135
• 10.00R20(CM987E)	J/18	149/146J	20.0	7.5	1054	278	3250	7150	930	135	3000	6610	930	135
• 11.00R20(CM987)	J/18	152/149K	18.0	8.0	1085	293	3550	7825	930	135	3250	7165	930	135
• 11.00R20(CM987E)	J/18	152/149K	22.0	8.0	1096	293	3550	7825	930	135	3250	7165	930	135
• 12.00R20(CM987)	J/18	154/151K	19.0	8.5	1125	315	3750	8270	830	120	3450	7610	830	120
• 12.00R20(CM987)	L/20	156/153J	19.0	8.5	1125	315	4000	8820	900	131	3650	8050	900	131
• 11R22.5(CM987)	G/14	144/142L	20.6	8.25	1065	279	2800	6175	720	105	2650	5840	720	105
• 11R22.5(CM987)	H/16	148/145L	20.6	8.25	1065	279	3150	6940	850	123	2900	6390	850	123
• 11R22.5(CM987)	J/18	149/146L	20.6	8.25	1054	279	3250	7160	930	135	3000	6610	930	135
• 12R22.5(CM987)	J/18	152/149L	18.0	9.00	1085	300	3550	7830	930	135	3250	7160	930	135
• 295/80R22.5(CM987PRO)	J/18	152/149L	19.5	9.00	1050	298	3550	7830	900	131	3250	7160	900	131
• 11R24.5(CM987)	G/14	146/143L	20.6	8.25	1116	279	3000	6610	720	105	2725	6005	720	105
• 11R24.5(CM987)	H/16	149/146L	20.6	8.25	1116	279	3250	7160	830	120	3000	6610	830	120

• Made in China • Made in Thailand



- Traction block tread design for high drive wheel efficiency in all seasons
- Aggressive blading helps provide road-gripping traction
- Open shoulder produces powerful traction on wet and dry roads



● : Recommendable

## CM986

Size	LR / PR	Service index	Tread Depth (mm)	Standard Rim	Overall Diameter (mm)	Section Width (mm)	Max. Load Capacity at Cold Inflation Pressure							
							Single			Dual				
							(kg)	(lbs)	(kPa) (psi)	(kg)	(lbs)	(kPa) (psi)		
● 245/70R17.5	H/16	136/134M	15.0	7.50	789	248	2240	4940	850	123	2120	4675	850	123
● 245/70R17.5	J/18	143/141J	15.0	7.50	789	248	2725	6005	875	128	2575	5675	875	128
● 205/75R17.5	G/14	124/122M	14.0	6.00	753	205	1600	3525	750	109	1500	3305	750	109
● 215/75R17.5	H/16	135/133J	14.5	6.00	767	211	2180	4805	850	123	2060	4540	850	123
● 225/75R17.5	G/14	129/127M	14.5	6.75	783	226	1850	4080	725	105	1750	3860	725	105
● 235/75R17.5	G/14	132/130M	15.4	6.75	797	233	2000	4410	775	112	1900	4190	775	112
● 235/75R17.5	H/16	143/141J	15.4	6.75	797	233	2725	6005	875	128	2575	5675	875	128
● 225/70R19.5	F/12	125/123M	15.0	6.75	811	226	1650	3640	660	95	1550	3415	660	95
● 245/70R19.5	G/14	133/131M	15.4	7.50	839	248	2060	4540	760	110	1950	4300	760	110
● 245/70R19.5	H/16	136/134M	15.4	7.50	839	248	2240	4940	830	120	2120	4675	830	120
● 285/70R19.5	H/16	146/144K	16.0	8.25	895	283	3000	6610	850	123	2800	6175	850	123

● Made in China   ● Made in Thailand



- Strong tyre carcass offers lateral durability for regional application
- Good damage protection and even wear profile feature outstanding performance in all conditions
- Excellent traction and good handling



● : Recommendable

## AT560

Size	LR / PR	Service index	Tread Depth (mm)	Standard Rim	Overall Diameter (mm)	Section Width (mm)	Max. Load Capacity at Cold Inflation Pressure							
							Single			Dual				
							(kg)	(lbs)	(kPa) (psi)	(kg)	(lbs)	(kPa) (psi)		
● 385/65R22.5	J/18	158L(160K)	16.0	11.75	1072	389	4250	9370	850	125	-	-	-	-
● 385/65R22.5	L/20	160K(158L)	16.0	11.75	1072	389	4500	9920	900	130	-	-	-	-
● 425/65R22.5	L/20	165K	16.7	12.25	1124	430	5150	11400	830	120	-	-	-	-
● 315/80R22.5	J/18	154/151M	16.0	9.00	1076	312	3750	8270	830	120	3450	7610	830	120
● 315/80R22.5	L/20	157/154K	16.0	9.00	1076	312	4125	9090	900	130	3750	8270	900	130

● Made in China



- Strong tyre carcass offers lateral durability for regional application
- Micro tortuous pattern groove design, Horizontal shallow ditch design, Ensure tyre grip while reducing rolling resistance, Reduce fuel consumption, energy conservation and environmental protection
- Wide tread width offers more stable driving feel



● : Recommendable   ● : Available

## AT532

Size	LR / PR	Service index	Tread Depth (mm)	Standard Rim	Overall Diameter (mm)	Section Width (mm)	Max. Load Capacity at Cold Inflation Pressure							
							Single			Dual				
							(kg)	(lbs)	(kPa) (psi)	(kg)	(lbs)	(kPa) (psi)		
● 385/65R22.5	L/20	160K	15.5	11.75	1072	389	4500	9920	900	130	-	-	-	-

● Made in China   ● Made in Thailand



- High saturation pattern design, Improving tyre wear resistance, Significantly increase vehicle mileage
- Finite element simulation analysis, More uniform distribution of tyre contact pressure, improve uneven wear performance
- Special formula design, Greatly reduces rolling resistance



● : Recommendable   ● : Available

## AT512

Size	LR / PR	Service index	Tread Depth (mm)	Standard Rim	Overall Diameter (mm)	Section Width (mm)	Max. Load Capacity at Cold Inflation Pressure							
							Single			Dual				
							(kg)	(lbs)	(kPa) (psi)	(kg)	(lbs)	(kPa) (psi)		
● 385/65R22.5	L/20	160K	15.5	11.75	1072	389	4500	9920	900	130	-	-	-	-

● Made in Thailand

# MIXED SERVICE



## MIXED SERVICE

Used both on and off road  
 Heavy loads and outstanding durability  
 Special protection against the damage caused by the road condition

### ON & OFF



CR926/+ /B/D AT557 CM988 EZ573



CM998/+ EZ861 EZ865 EZ867 CM913 CM954 CM923 MD738 EZ356 EZ373



MD777 EZ591 MD726 EZ377 Pro EZ399 CB999 CB981 CB901 EZ372

### MINING



EZ870 EZ310 CB972 CB919 CB905 CB332 EZ330



MIXED SERVICE  
ON & OFF

ZC-RUBBER TRUCK & BUS TYRE CATALOG



# CR926+



● : Recommendable    ● : Available



Upgraded classic tyre for ON&OFF application with Longer mileage and Enhanced durability based on PSCT BTCT technology reduce deformation at the end of belt at high speed



3 circumferential grooves ensures good directional stability, even wear and smooth ride



Heavy siping provides good braking stability and high lateral traction on wet and dry surface



Sidewall reinforcing ribs protects against impacts and scuffing



## CR926 / CR926B / CR926D

Size	LR / PR	Service index	Tread Depth (mm)	Standard Rim	Overall Diameter (mm)	Section Width (mm)	Max. Load Capacity at Cold Inflation Pressure							
							Single			Dual				
							(kg)	(lbs)	(kPa) (psi)	(kg)	(lbs)	(kPa) (psi)		
● 6.50R16(CR926)	F/12	110/105L	9.5	5.50F	750	185	1060	2335	670	97	925	2040	670	97
● 7.00R16(CR926)	G/14	118/114M	11.0	5.50F	775	200	1320	2910	770	112	1180	2600	770	112
● 7.50R16(CR926)	G/14	122/118L	12.0	6.00G	805	215	1500	3305	770	112	1320	2910	770	112
● 7.50R20(CR926)	G/14	130/128L	14.0	6.0	935	215	1900	4190	830	120	1800	3970	830	120
● 8.25R16(CR926)	G/14	126/122L	14.0	6.50H	855	235	1700	3750	670	97	1500	3305	670	97
● 8.25R16(CR926)Reinforced	G/14	128/126L	14.0	6.50H	855	235	1800	3970	670	97	1700	3750	670	97
● 8.25R20(CR926)	H/16	139/137L	15.0	6.5	974	236	2430	5360	930	135	2300	5070	930	135
● 9.00R20(CR926)	H/16	144/142K	15.5	7.0	1019	259	2800	6175	900	130	2650	5840	900	130
● 10.00R20(CR926)	H/16	146/143K	16.0	7.5	1054	278	3000	6610	830	120	2725	6005	830	120
● 10.00R20(CR926)	J/18	149/146J	16.0	7.5	1054	278	3250	7160	930	135	3000	6610	930	135
● 11.00R20(CR926)	J/18	152/149K	16.0	8.0	1085	293	3550	7825	930	135	3250	7165	930	135
● 12.00R20(CR926)	J/18	154/151K	17.5	8.5	1125	315	3750	8270	830	120	3450	7610	830	120
● 12.00R20(CR926)	L/20	156/153J	17.5	8.5	1125	315	4000	8820	900	131	3650	8050	900	131
● 12.00R24(CR926)	L/20	160/157K	16.0	8.5	1226	315	4500	9920	900	131	4125	9090	900	131
● 12.00R24(CR926B)	L/20	160/157K	19.0	8.5	1226	315	4500	9920	900	131	4125	9090	900	131
● 325/95R24(CR926B)	M/22	162/160K	19.0	9.00	1228	325	4750	10470	850	123	4500	9920	850	123
● 11R22.5(CR926D)	G/14	144/142M	16.8	8.25	1054	279	2800	6175	720	105	2650	5840	720	105
● 11R22.5(CR926D)	H/16	148/145M	16.8	8.25	1054	279	3150	6940	850	123	2900	6390	850	123
● 11R22.5(CR926D)	J/18	149/146L	16.8	8.25	1054	279	3250	7160	930	135	3000	6610	930	135
● 12R22.5(CR926)	J/18	152/149L	16.0	9.00	1085	300	3550	7830	930	135	3250	7160	930	135
● 13R22.5(CR926)	J/18	156/151K	16.0	9.75	1124	320	4000	8820	875	128	3450	7610	875	128
● 255/70R22.5(CR926D)	H/16	140/137L	14.2	7.50	930	255	2500	5510	830	120	2300	5070	830	120
● 295/80R22.5(CR926D)	H/16	150/147M	16.0	9.00	1044	298	3350	7390	830	120	3075	6780	830	120
● 295/80R22.5(CR926D)	J/18	152/149L	16.0	9.00	1044	298	3550	7830	900	131	3250	7160	900	131
● 315/80R22.5(CR926B)	J/18	154/151M(156/150L)	16.5	9.00	1076	312	3750	8270	830	120	3450	7610	830	120
● 315/80R22.5(CR926B)	L/20	157/154K	16.5	9.00	1076	312	4125	9090	900	130	3750	8270	900	130
● 11R24.5(CR926D)	G/14	146/143L	16.8	8.25	1104	279	3000	6610	720	105	2725	6005	720	105
● 11R24.5(CR926D)	H/16	149/146L	16.8	8.25	1104	279	3250	7160	830	120	3000	6610	830	120
● 12R24.5(CR926D)	J/18	154/151L	17.0	9.00	1147	300	3750	8270	930	135	3450	7610	930	135

● Made in China    ● Made in Thailand

- 3 circumferential grooves ensures good directional stability, even wear and smooth ride
- Heavy siping provides good braking stability and high lateral traction on wet and dry surface
- Improved tread compound helps resist tears and ensure good mileage in on and off road use
- Sidewall reinforcing ribs protects against impacts and scuffing



● : Recommendable    ● : Available

Size	LR / PR	Service index	Tread Depth (mm)	Standard Rim	Overall Diameter (mm)	Section Width (mm)	Max. Load Capacity at Cold Inflation Pressure							
							Single			Dual				
							(kg)	(lbs)	(kPa) (psi)	(kg)	(lbs)	(kPa) (psi)		
● 8.25R20	H/16	139/137L	15.0	6.5	974	236	2430	5360	930	135	2300	5070	930	135
● 9.00R20	H/16	144/142K	15.5	7.0	1019	259	2800	6175	900	130	2650	5840	900	130
● 10.00R20	H/16	146/143K	16.0	7.5	1054	278	3000	6610	830	120	2725	6005	830	120
● 10.00R20	J/18	149/146J	16.0	7.5	1054	278	3250	7160	930	135	3000	6610	930	135
● 11.00R20	J/18	152/149K	16.0	8.0	1085	293	3550	7825	930	135	3250	7165	930	135
● 12.00R20	J/18	154/151K	17.5	8.5	1125	315	3750	8270	830	120	3450	7610	830	120
● 12.00R20	L/20	156/153J	17.5	8.5	1125	315	4000	8820	900	131	3650	8050	900	131
● 11R22.5	H/16	148/145L	15.5	8.25	1054	279	3150	6940	850	123	2900	6390	850	123
● 12R22.5	J/18	152/149L	16.0	9.00	1085	300	3550	7830	930	135	3250	7160	930	135

● Made in China



- Aggressive multi-service, all position tread pattern promises excellent traction in ON/OFF road service
- Outstanding self-cleaning tread design ensures long-life service in ON/OFF road conditions
- Robust tread blocks and rugged casing allows for heavy loads and resist casing penetration and damage



● : Recommendable   ● : Available

## AT557

Size	LR / PR	Service index	Tread Depth (mm)	Standard Rim	Overall Diameter (mm)	Section Width (mm)	Max. Load Capacity at Cold Inflation Pressure							
							Single				Dual			
							(kg)	(lbs)	(kPa)	(psi)	(kg)	(lbs)	(kPa)	(psi)
● 385/65R22.5	J/18	158L(160K)	18.0	11.75	1072	389	4250	9370	850	125	-	-	-	-
● 385/65R22.5	L/20	160K(158L)	18.0	11.75	1072	389	4500	9920	900	130	-	-	-	-
● 425/65R22.5	L/20	165K	18.0	12.25	1124	430	5150	11400	830	120	-	-	-	-
● 445/65R22.5	L/20	169K	18.0	13.00	1150	444	5800	12775	900	130	-	-	-	-
● 265/70R19.5	J/18	143/141J	16.5	7.50	867	262	2725	6005	850	123	2575	5675	850	123
● 12R22.5	J/18	152/149L	17.5	9.00	1085	300	3550	7830	930	135	3250	7160	930	135
● 13R22.5	J/18	156/151K	16.5	9.75	1124	320	4000	8820	875	128	3450	7610	875	128
● 255/70R22.5	H/16	140/137L	17.5	7.50	936	255	2500	5510	830	120	2300	5070	830	120
● 275/70R22.5	H/16	148/145L	18.0	8.25	958	276	3150	6940	900	130	2900	6395	900	130
● 315/80R22.5	J/18	154/151M(156/153L)	17.5	9.00	1076	312	3750	8270	830	120	3450	7610	830	120
● 315/80R22.5	L/20	157/154K	17.5	9.00	1076	312	4125	9090	900	130	3750	8270	900	130
● 315/80R22.5	M/22	164/158K	17.5	9.00	1076	312	5000	11000	950	138	4250	9370	950	138

● Made in China   ● Made in Thailand



- Increased tread width and depth promise longer mileage
- Stone rejection design reduces stone retention and maximize the casing durability
- Zig-zag rib groove ensure super traction on wet, dry and snow roads
- Scuff protection on sidewalls enhances resistance to lateral impacts and abrasion



● : Recommendable   ● : Available

## EZ573

Size	LR / PR	Service index	Tread Depth (mm)	Standard Rim	Overall Diameter (mm)	Section Width (mm)	Max. Load Capacity at Cold Inflation Pressure							
							Single				Dual			
							(kg)	(lbs)	(kPa)	(psi)	(kg)	(lbs)	(kPa)	(psi)
● 11R22.5	H/16	148/145L	15.5	8.25	1054	279	3150	6940	850	123	2900	6390	850	123
● 12R22.5	J/18	152/149L	9.0	16	1085	300	3550	7830	930	135	3250	7160	930	135
● 275/80R22.5	H/16	149/146L	19.0	8.25	1012	276	3250	7165	850	123	3000	6610	850	123
● 315/80R22.5	L/20	157/154K	16.5	9.00	1076	312	4125	9090	900	130	3750	8270	900	130
● 12.00R24	L/20	160/157K	16.0	8.5	1210	305	4500	9920	900	131	4125	9090	900	131

● Made in China   ● Made in Thailand



- Wide, deep tread helps provide long tread life in regional conditions
- Zig-zag ribs ensure even wear and grip on wet, dry and snowy roads



● : Recommendable   ● : Available

## CM988

Size	LR / PR	Service index	Tread Depth (mm)	Standard Rim	Overall Diameter (mm)	Section Width (mm)	Max. Load Capacity at Cold Inflation Pressure							
							Single				Dual			
							(kg)	(lbs)	(kPa)	(psi)	(kg)	(lbs)	(kPa)	(psi)
● 7.00R16	G/14	118/114L	14.0	5.50F	785	200	1320	2910	770	112	1180	2600	770	112
● 7.50R16	G/14	122/118L	15.5	6.00G	805	215	1500	3305	770	112	1320	2910	770	112
● 8.25R16	H/16	128/124L	16.0	6.50H	865	235	1800	3970	770	112	1600	3525	770	112
● 8.25R20	H/16	139/137K	15.5	6.5	974	236	2430	5360	930	135	2300	5070	930	135
● 9.00R20	H/16	144/142K	16.0	7.0	1019	259	2800	6175	900	130	2650	5840	900	130
● 10.00R20	H/16	146/143K	15.5	7.5	1054	278	3000	6610	830	120	2725	6005	830	120
● 10.00R20	J/18	149/146J	15.5	7.5	1054	278	3250	7160	930	135	3000	6610	930	135
● 11.00R20	J/18	152/149K	16.0	8.0	1085	293	3550	7825	930	135	3250	7165	930	135
● 12.00R20	J/18	154/151K	17.0	8.5	1125	315	3750	8270	830	120	3450	7610	830	120
● 215/75R17.5	H/16	135/133J	14.0	6.00	767	211	2180	4805	850	123	2060	4540	850	123
● 235/75R17.5	G/14	132/130M	15.0	6.75	797	233	2000	4410	775	112	1900	4190	775	112
● 235/75R17.5	H/16	143/141J	15.0	6.75	797	233	2725	6005	875	128	2575	5675	875	128
● 11R22.5	G/14	144/142L	18.5	8.25	1054	279	2800	6175	720	105	2650	5840	720	105
● 11R22.5	H/16	148/145L	18.5	8.25	1065	279	3150	6940	850	123	2900	6390	850	123
● 12R22.5	J/18	152/149L	18.0	9.00	1085	300	3550	7830	930	135	3250	7160	930	135
● 295/80R22.5	H/16	150/147L	18.5	9.00	1050	298	3350	7390	830	120	3075	6780	830	120
● 295/80R22.5	J/18	152/149L	18.5	9.00	1050	298	3550	7830	900	131	3250	7160	900	131
● 315/80R22.5	J/18	154/151M(156/153L)	18.5	9.00	1082	312	3750	8270	830	120	3450	7610	830	120
● 315/80R22.5	L/20	157/154K	18.5	9.00	1082	312	4125	9090	900	130	3750	8270	900	130
● 315/80R22.5	M/22	164/158K	18.5	9.00	1082	312	5000	11000	950	138	4250	9370	950	138
● 11R24.5	G/14	146/143L	18.5	8.25	1104	279	3000	6610	720	105	2725	6005	720	105
● 11R24.5	H/16	149/146L	18.5	8.25	1104	279	3250	7160	830	120	3000	6610	830	120

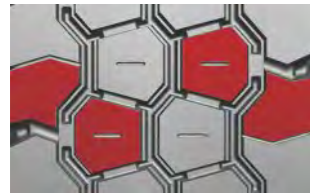
● Made in China   ● Made in Thailand



# CM998+



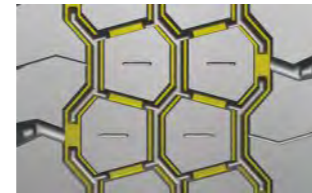
● : Recommendable    ● : Available



Aggressive block design provides outstanding traction on rough roads



Wide tread and special tread compounds resist chipping, chunking, and tearing



Circumferential tie bar design increase the stiffness on the shoulder area



Upgraded classic tyre for on&off application with Longer mileage and Enhanced durability based on PSCT

Strong tyre casing offer lateral durability for longer tyre life



# CM998



● : Recommendable    ● : Available

- Aggressive block design provides outstanding traction on rough roads
- Wide tread and special tread compounds resist chipping, chunking, and tearing
- Durable tyre casing for heavy loads
- Applicable for low speed use. Maximum speed shall be limited to 70 km/h in winter and 50 km/h in summer

Size	LR / PR	Service index	Tread Depth (mm)	Standard Rim	Overall Diameter (mm)	Section Width (mm)	Max. Load Capacity at Cold Inflation Pressure							
							Single				Dual			
							(kg)	(lbs)	(kPa)	(psi)	(kg)	(lbs)	(kPa)	(psi)
7.00R16	G/14	118/114L	15.5	5.50F	785	200	1320	2910	770	112	1180	2600	770	112
7.50R16	G/14	122/118L	16.0	6.00G	815	215	1500	3305	770	112	1320	2910	770	112
8.25R16	G/14	128/126L	16.5	6.50H	865	235	1800	3970	670	97	1700	3750	670	97
8.25R16	H/16	128/124L	16.5	6.50H	865	235	1800	3970	770	112	1600	3525	770	112
8.25R20	H/16	139/137K	16.5	6.5	974	236	2430	5360	930	135	2300	5070	930	135
9.00R20	H/16	144/142K	17.0	7.0	1019	259	2800	6175	900	130	2650	5840	900	130
10.00R20	H/16	146/143K	18.0	7.5	1054	278	3000	6610	830	120	2725	6005	830	120
10.00R20	J/18	149/146J	18.0	7.5	1054	278	3250	7160	930	135	3000	6610	930	135
11.00R20	J/18	152/149J	19.0	8.0	1085	293	3550	7825	930	135	3250	7165	930	135
12.00R20	J/18	154/151K	20.5	8.5	1125	315	3750	8270	830	120	3450	7610	830	120
12.00R20	L/20	156/153J	20.5	8.5	1125	315	4000	8820	900	131	3650	8050	900	131

● Made in China    ● Made in Thailand

Size	LR / PR	Service index	Tread Depth (mm)	Standard Rim	Overall Diameter (mm)	Section Width (mm)	Max. Load Capacity at Cold Inflation Pressure							
							Single				Dual			
							(kg)	(lbs)	(kPa)	(psi)	(kg)	(lbs)	(kPa)	(psi)
12.00R20	J/18	154/151K	20.5	8.5	1125	315	3750	8270	830	120	3450	7610	830	120
12.00R20	L/20	156/153J	20.5	8.5	1125	315	4000	8820	900	131	3650	8050	900	131

● Made in China



# EZ861



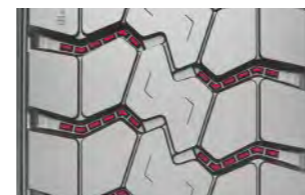
● : Recommendable    ● : Available



Brand new flagship tyre for on&off application with Less sidewall deformation and enhanced tyre life based on PSCT Cutting resistance compound helps resist chipping, chunking and tearing for a better mileage



Dual tie bars center block ensure the tyre stability in all driving conditions



Stone rejection design reduces stone retention and maximize casing durability



Optimized sipes distribution and open shoulder design improve the heat resistance performance

Size	LR / PR	Service index	Tread Depth (mm)	Standard Rim	Overall Diameter (mm)	Section Width (mm)	Max. Load Capacity at Cold Inflation Pressure							
							Single			Dual				
							(kg)	(lbs)	(kPa) (psi)	(kg)	(lbs)	(kPa) (psi)		
● 12.00R20	J/18	154/151K	18.5	8.5	1136	315	3750	8270	830	120	3450	7610	830	120
● 12.00R20	L/20	156/153J	18.5	8.5	1136	315	4000	8820	900	131	3650	8050	900	131

● Made in China



Brand new flagship tyre for on&off application with Less sidewall deformation and enhanced tyre life based on PSCT

Cutting resistance compound helps resist chipping, chunking and tearing for a better mileage



● : Recommendable    ● : Available

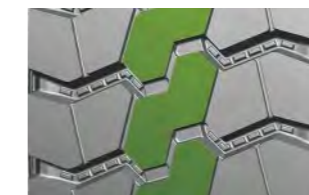
# EZ865

Size	LR / PR	Service index	Tread Depth (mm)	Standard Rim	Overall Diameter (mm)	Section Width (mm)	Max. Load Capacity at Cold Inflation Pressure							
							Single			Dual				
							(kg)	(lbs)	(kPa) (psi)	(kg)	(lbs)	(kPa) (psi)		
● 8.25R20	H/16	139/137K	16.0	6.5	974	236	2430	5360	930	135	2300	5070	930	135
● 9.00R20	H/16	144/142K	16.0	7.0	1019	259	2800	6175	900	130	2650	5840	900	130
● 10.00R20	J/18	149/146J	19.0	7.5	1054	278	3250	7160	930	135	3000	6610	930	135
● 11.00R20	J/18	152/149K	19.0	8.0	1085	293	3550	7825	930	135	3250	7165	930	135
● 12.00R20	J/18	154/151K	20.0	8.5	1136	315	3750	8270	830	120	3450	7610	830	120
● 12.00R20	L/20	156/153J	20.0	8.5	1136	315	4000	8820	900	131	3650	8050	900	131
● 12R22.5	J/18	152/149K	20.5	9.00	1085	300	3550	7830	930	135	3250	7160	930	135

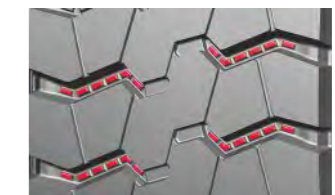
● Made in China    ● Made in Thailand



Robust open shoulder provide outstanding traction and self-cleaning ability



Continuous center block pattern guarantee a stability driving in on&off road



Stone rejection design reduces stone retention and maximize casing durability



# EZ867



● : Recommendable   ● : Available



Brand new flagship tyre for on&off application with Less sidewall deformation and enhanced tyre life based on PSCT

Cutting resistance compound helps resist chipping, chunking and tearing for a better mileage

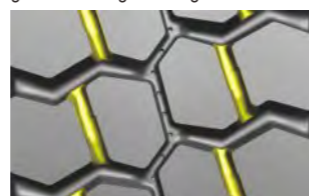
Width and high rubber volume tread design ensure a remarkable tyre life



Polygonal block pattern provides excellent traction performance on rough roads



Integrated tie bars prevents stone drilling and guarantee longer mileage



Size	LR / PR	Service index	Tread Depth (mm)	Standard Rim	Overall Diameter (mm)	Section Width (mm)	Max. Load Capacity at Cold Inflation Pressure							
							Single			Dual				
							(kg)	(lbs)	(kPa) (psi)	(kg)	(lbs)	(kPa) (psi)		
7.00R16	G/14	118/114L	18.5	6.50H	865	235	1800	2910	770	112	1180	2600	770	112
8.25R16	H/16	128/124J	18.5	6.50H	235	865	1800	3970	770	112	1600	3525	770	112
8.25R20	H/16	139/137K	16.0	6.5	974	236	2430	5360	930	135	2300	5070	930	135
9.00R20	H/16	144/142K	18.0	7.0	1019	259	2800	6175	900	130	2650	5840	900	130
10.00R20	J/18	149/146J	19.0	7.5	1054	278	3250	7160	930	135	3000	6610	930	135
11.00R20	J/18	152/149K	22.0	8.0	1085	293	3550	7825	930	135	3250	7165	930	135
12.00R20	J/18	154/151K	22.0	8.5	1136	315	3750	8270	830	120	3450	7610	830	120
12.00R20	L/20	156/153J	22.0	8.5	1136	315	4000	8820	900	131	3650	8050	900	131
12R22.5	J/18	152/149K	22.0	9.00	1096	300	3550	7830	930	135	3250	7160	930	135
13R22.5	J/18	156/151K	22.0	9.75	1124	320	3750	8270	830	120	3450	7610	830	120

● Made in China   ● Made in Thailand



- Drive axle tyre applicable for mud and sand terrain with short on high-way use
- Wide tread and open shoulder blocks help enhance traction and braking on rough roads with mud or gravel
- Special tread compounds resist chipping, chunking and tearing



● : Recommendable   ● : Available

## CM913/CM913A

Size	LR / PR	Service index	Tread Depth (mm)	Standard Rim	Overall Diameter (mm)	Section Width (mm)	Max. Load Capacity at Cold Inflation Pressure							
							Single			Dual				
							(kg)	(lbs)	(kPa) (psi)	(kg)	(lbs)	(kPa) (psi)		
7.00R16(CM913)	G/14	118/114L	16.0	6.00G	815	215	1500	2910	770	112	1180	2600	770	112
8.25R20(CM913)	H/16	139/137K	16.5	6.5	974	236	2430	5360	930	135	2300	5070	930	135
9.00R20(CM913)	H/16	144/142K	20.0	7.0	1019	259	2800	6175	900	130	2650	5840	900	130
10.00R20(CM913)	H/16	146/143K	20.0	7.5	1054	278	3000	6610	830	120	2725	6005	830	120
10.00R20(CM913)	J/18	149/146J	20.0	7.5	1054	278	3250	7160	930	135	3000	6610	930	135
11.00R20(CM913)	J/18	152/149J	20.6	8.0	1085	293	3550	7825	930	135	3250	7165	930	135
11.00R20(CM913A)	J/18	152/149K	18.6	8.0	1085	293	3550	7825	930	135	3250	7165	930	135
12.00R20(CM913)	J/18	154/151K	22.0	8.5	1125	315	3750	8270	830	120	3450	7610	830	120
12.00R20(CM913)	L/20	156/153J	22.0	8.5	1125	315	4000	8820	900	131	3650	8050	900	131
12.00R20(CM913A)	J/18	154/151K	19.0	8.5	1125	315	3750	8270	830	120	3450	7610	830	120
12.00R20(CM913A)	L/20	156/153J	19.0	8.5	1125	315	4000	8820	900	131	3650	8050	900	131
12.00R24(CM913A)	L/20	160/157K	19.0	8.5	1226	315	4500	9920	900	131	4125	9090	900	131
325/95R24(CM913A)	M/22	162/160K	19.0	9.00	1228	325	4750	10470	850	123	4500	9920	850	123
12R22.5(CM913A)	J/18	152/149L	20.6	9.00	1085	300	3550	7830	930	135	3250	7160	930	135
13R22.5(CM913A)	J/18	156/151K	20.0	9.75	1124	320	4000	8820	875	128	3450	7610	875	128
275/70R22.5(CM913A)	H/16	148/145L	18.0	8.25	276	964	3150	6940	900	130	2900	6395	900	130
315/80R22.5(CM913A)	J/18	154/151M(156/150L)	19.0	9.00	1082	312	3750	8270	830	120	3450	7610	830	120
315/80R22.5(CM913A)	L/20	157/154K	19.0	9.00	1082	312	4125	9090	900	130	3750	8270	900	130

● Made in China   ● Made in Thailand



- Continuous central design ensures driving stability and smooth ride
- The central siped zig-zag rib ensures even wear and grip on wet and muddy surface



● : Recommendable   ● : Available

## CM954

Size	LR / PR	Service index	Tread Depth (mm)	Standard Rim	Overall Diameter (mm)	Section Width (mm)	Max. Load Capacity at Cold Inflation Pressure							
							Single			Dual				
							(kg)	(lbs)	(kPa) (psi)	(kg)	(lbs)	(kPa) (psi)		
10.00R20	H/16	146/143K	16.0	7.5	1054	278	3000	6610	830	120	2725	6005	830	120
11.00R20	H/16	150/147K	15.0	8.0	1085	293	3350	7390	830	120	3075	6780	830	120
11R22.5	H/16	148/145M	16.0	8.25	1054	279	3150	6940	850	123	2900	6390	850	123
295/80R22.5	J/18	152/149M	16.0	9.00	1044	298	3550	7830	900	131	3250	7160	900	131

● Made in China   ● Made in Thailand



- Drive axle tyre applicable for rough road service
- Durable tyre casing and wide tread enhance tyre life
- Open lug design helps deliver super traction in wet and off-road conditions



● : Recommendable ● : Available

## CM923

Size	LR / PR	Service index	Tread Depth (mm)	Standard Rim	Overall Diameter (mm)	Section Width (mm)	Max. Load Capacity at Cold Inflation Pressure							
							Single			Dual				
							(kg)	(lbs)	(kPa) (psi)	(kg)	(lbs)	(kPa) (psi)		
13R22.5	J/18	156/150K	20.0	9.75	1124	320	4000	8820	875	128	3350	7390	875	128
315/80R22.5	J/18	154/151M(156/150L)	20.0	9.00	1082	312	3750	8270	830	120	3450	7610	830	120
315/80R22.5	L/20	157/154K	20.0	9.00	1082	312	4125	9090	900	130	3750	8270	900	130

● Made in China ● Made in Thailand



- Excellent traction for ON/OFF drive axle application
- Aggressive and optimum self-cleaning tread with lateral grooves provides remarkable performance in all weather conditions both on and off the roads



● : Recommendable ● : Available

## MD738/MD738A

Size	LR / PR	Service index	Tread Depth (mm)	Standard Rim	Overall Diameter (mm)	Section Width (mm)	Max. Load Capacity at Cold Inflation Pressure							
							Single			Dual				
							(kg)	(lbs)	(kPa) (psi)	(kg)	(lbs)	(kPa) (psi)		
9.5R17.5(MD738)	G/14	129/127L	16.5	6.75	842	240	1850	4080	750	109	1750	3860	750	109
9.5R17.5(MD738)	H/16	143/141J	16.5	6.75	842	240	2725	6005	875	128	2575	5675	875	128
9.5R17.5(MD738A)	G/14	129/127L	15.0	6.75	842	240	1850	4080	750	109	1750	3860	750	109
9.5R17.5(MD738A)	H/16	143/141J	15.0	6.75	842	240	2725	6005	875	128	2575	5675	875	128
215/75R17.5(MD738)	H/16	135/133J	15.0	6.00	767	211	2180	4805	850	123	2060	4540	850	123
235/75R17.5(MD738)	G/14	132/130M	16.0	6.75	797	233	2000	4410	775	112	1900	4190	775	112
235/75R17.5(MD738)	H/16	143/141J	16.0	6.75	797	233	2725	6005	875	128	2575	5675	875	128
11R22.5(MD738)	G/14	144/142L	20.6	8.25	1065	279	2800	6175	720	105	2650	5840	720	105
11R22.5(MD738)	H/16	148/145L	20.6	8.25	1065	279	3150	6940	850	123	2900	6390	850	123
12R22.5(MD738)	J/18	152/149L	20.6	9.00	1085	300	3550	7830	930	135	3250	7160	930	135
275/70R22.5(MD738)	H/16	148/145J	18.0	8.25	964	276	3150	6940	900	130	2900	6395	900	130
295/80R22.5(MD738)	H/16	150/147L	20.6	9.00	1050	298	3350	7390	830	120	3075	6780	830	120
295/80R22.5(MD738)	J/18	152/149L	20.6	9.00	1050	298	3550	7830	900	131	3250	7160	900	131
11R24.5(MD738)	G/14	146/143L	22.6	8.25	1116	279	3000	6610	720	105	2725	6005	720	105
11R24.5(MD738)	H/16	149/146L	22.6	8.25	1116	279	3250	7160	830	120	3000	6610	830	120

● Made in China ● Made in Thailand



- Applicable for drive axle on unpaved road
- Robust tread block provide outstanding traction on sand and mud road surface
- Special groove design with stone rejector prevent from stone penetration
- Durable tyre carcass and improved tread compound help to resist chipping and chunking for longer tyre life



● : Recommendable ● : Available

## EZ356/EZ373

Size	LR / PR	Service index	Tread Depth (mm)	Standard Rim	Overall Diameter (mm)	Section Width (mm)	Max. Load Capacity at Cold Inflation Pressure							
							Single			Dual				
							(kg)	(lbs)	(kPa) (psi)	(kg)	(lbs)	(kPa) (psi)		
425/65R22.5(EZ373)	L/20	165J	24.5	12.25	1124	430	5150	11400	830	120	-	-	-	-
8.25R16(EZ356)	H/16	128/124J	16.0	6.50H	865	235	1800	3970	770	112	1600	3525	770	112
10.00R20(EZ373)	H/16	146/143K	19.0	7.5	1054	278	3000	6610	830	120	2725	6005	830	120
10.00R20(EZ373)	J/18	149/146J	19.0	7.5	1054	278	3250	7160	930	135	3000	6610	930	135
12.00R20(EZ356)	J/18	154/151F	24.0	8.5	1136	315	3750	8270	830	120	3450	7610	830	120
12.00R20(EZ356)	L/20	156/153C	24.0	8.5	1136	315	4000	8820	900	131	3650	8050	900	131
11R22.5(EZ373)	G/14	144/142K	23.0	8.25	1065	279	2800	6175	720	105	2650	5840	720	105
11R22.5(EZ373)	H/16	148/145K	23.0	8.25	1065	279	3150	6940	850	123	2900	6390	850	123
12R22.5(EZ373)	J/18	152/149K	23.0	9.00	1096	300	3550	7830	930	135	3250	7160	930	135
445/65R22.5(EZ573)	L/20	169K	24.5	13.00	1150	365	5800	12775	900	130	-	-	-	-
11R24.5(EZ373)	G/14	146/143L	23.0	8.25	1116	279	3000	6610	720	105	2725	6005	720	105
11R24.5(EZ373)	H/16	149/146L	23.0	8.25	1116	279	3250	7160	830	120	3000	6610	830	120

● Made in China ● Made in Thailand



- Premium tyre designed for drive position applicable for rough road surface
- Aggressive direction tread with robust tread blocks providing extra traction for on/off road condition
- Special rubber compound ensuring more resistance to cuts and tearing



● : Recommendable ● : Available

## MD777

Size	LR / PR	Service index	Tread Depth (mm)	Standard Rim	Overall Diameter (mm)	Section Width (mm)	Max. Load Capacity at Cold Inflation Pressure							
							Single			Dual				
							(kg)	(lbs)	(kPa) (psi)	(kg)	(lbs)	(kPa) (psi)		
12R22.5	J/18	152/149L	23.0	9.00	1096	300	3550	7830	930	135	3250	7160	930	135
13R22.5	J/18	156/151K	23.0	9.75	1136	320	4000	8820	875	128	3450	7610	875	128
315/70R22.5	L/20	156/150K	21.0	9.00	1020	312	4000	8820	900	130	3350	7390	900	130
295/80R22.5	J/18	152/149K	21.0	9.00	1050	298	3550	7830	900	131	3250	7160	900	131
315/80R22.5	J/18	154/151L(156/150K)	23.0	9.00	1082	312	3750	8270	830	120	3450	7610	830	120
315/80R22.5	L/20	157/154K	23.0	9.00	1082	312	4125	9090	900	130	3750	8270	900	130
315/80R22.5	M/22	164/158K	23.0	9.00	1076	312	5000	11000	950	138	4250	9370	950	138

● Made in China ● Made in Thailand



- High cost performance tyres suitable for mixed service application
- The consistent and sturdy pattern design at the center of the tread, Reduce tyre tread damage and improve tyre life
- The tread adopts a wear-resistant and cutting resistant formula, Improve the comprehensive performance of tyres



## EZ591

Size	LR / PR	Service index	Tread Depth (mm)	Standard Rim	Overall Diameter (mm)	Section Width (mm)	Max. Load Capacity at Cold Inflation Pressure							
							Single				Dual			
							(kg)	(lbs)	(kPa)	(psi)	(kg)	(lbs)	(kPa)	(psi)
• 11R22.5	H/16	148/145K	19.5	8.25	1065	279	3150	6940	850	123	2900	6390	850	123
• 12R22.5	J/18	152/149K	19.5	9.00	1085	300	3550	7830	930	135	3250	7160	930	135
• 295/80R22.5	J/18	152/149J	21.0	9.00	1044	298	3550	7830	900	131	3250	7160	900	131
• 315/80R22.5	L/20	157/154K	20.0	9.00	1082	312	4125	9090	900	130	3750	8270	900	130

• Made in China



- Massive tread blocks and specific tread compound offer superb resistance against cuts and penetrations
- The tread adopts a wear-resistant and cutting resistant formula, Improve the comprehensive performance of tyres



## EZ377/EZ377 Pro

Size	LR / PR	Service index	Tread Depth (mm)	Standard Rim	Overall Diameter (mm)	Section Width (mm)	Max. Load Capacity at Cold Inflation Pressure							
							Single				Dual			
							(kg)	(lbs)	(kPa)	(psi)	(kg)	(lbs)	(kPa)	(psi)
• 315/80R22.5(EZ377)	M/22	164/158C	24.0	9.00	1082	312	5000	11000	950	138	4250	9370	950	138
• 315/80R22.5(EZ377Pro)	M/22	164/158C	27.0	9.00	1082	312	5000	11000	950	138	4250	9370	950	138

• Made in China



- High cost performance tires suitable for mixed service application
- The tread adopts a wear-resistant and cutting resistant formula, Improve the comprehensive performance of tires
- Aggressive direction tread with robust tread blocks providing extra traction for on/off road condition



## MD726

Size	LR / PR	Service index	Tread Depth (mm)	Standard Rim	Overall Diameter (mm)	Section Width (mm)	Max. Load Capacity at Cold Inflation Pressure							
							Single				Dual			
							(kg)	(lbs)	(kPa)	(psi)	(kg)	(lbs)	(kPa)	(psi)
• 295/80R22.5	J/18	152/149K	20.0	9.00	1050	298	3550	7830	900	131	3250	7160	900	131

• Made in China



- Massive tread blocks and specific tread compound offer superb resistance against cuts and penetrations
- The tread adopts a wear-resistant and cutting resistant formula, Improve the comprehensive performance of tires
- Open shoulder tread design improves self-cleaning capacity for ease of maintenance



## EZ399

Size	LR / PR	Service index	Tread Depth (mm)	Standard Rim	Overall Diameter (mm)	Section Width (mm)	Max. Load Capacity at Cold Inflation Pressure							
							Single				Dual			
							(kg)	(lbs)	(kPa)	(psi)	(kg)	(lbs)	(kPa)	(psi)
• 325/95R24	M/22	162/160K	23.0	9.00	1228	325	4750	10470	850	123	4500	9920	850	123

• Made in China



- Rugged tread blocks and tread design offer outstanding off-road traction
- Tough tread rubber compounds help resist chipping and chunking
- Enhanced traction in mud and sand



● : Recommendable  
● : Available

## CB999

Size	LR / PR	Service index	Tread Depth (mm)	Standard Rim	Overall Diameter (mm)	Section Width (mm)	Max. Load Capacity at Cold Inflation Pressure							
							Single				Dual			
							(kg)	(lbs)	(kPa)	(psi)	(kg)	(lbs)	(kPa)	(psi)
7.50R16	G/14	122/118M	15.0	6.00G	815	215	1500	3305	770	112	1320	2910	770	112
14.00R20	J/18	161/158K	19.5	10.00	1240	375	4625	10200	690	100	4250	9370	690	100
14.00R20	L/20	164/161J	19.5	10.00	1240	375	5000	11030	790	114	4625	10200	790	114

● Made in China



- Aggressive blocks provides outstanding traction on rough roads
- Suitable for all season and all position application on mud and sand terrain with some short on high-way use
- Cool-running compound enhances toughness casing



● : Recommendable  
● : Available

## CB901

Size	LR / PR	Service index	Tread Depth (mm)	Standard Rim	Overall Diameter (mm)	Section Width (mm)	Max. Load Capacity at Cold Inflation Pressure							
							Single				Dual			
							(kg)	(lbs)	(kPa)	(psi)	(kg)	(lbs)	(kPa)	(psi)
11.00R20	J/18	152/149J	21.0	8.00	1085	293	3550	7825	930	135	3250	7165	930	135
12.00R20	J/18	154/151F	22.0	8.50	1125	315	3750	8270	830	120	3450	7610	830	120

● Made in China



- Continuous central design ensures driving stability and smooth ride
- The central siped zig-zag rib ensures even wear and grip on wet and muddy surface
- Enhanced durability over rough road with good on-road performance



● : Recommendable  
● : Available

## CB981

Size	LR / PR	Service index	Tread Depth (mm)	Standard Rim	Overall Diameter (mm)	Section Width (mm)	Max. Load Capacity at Cold Inflation Pressure							
							Single				Dual			
							(kg)	(lbs)	(kPa)	(psi)	(kg)	(lbs)	(kPa)	(psi)
6.50R16	G/14	110/105J	10.0	5.50F	750	185	1060	2335	670	97	925	2040	670	97
7.00R16	H/16	118/114J	14.0	5.50F	785	200	1320	2910	770	112	1180	2600	770	112
7.50R16	G/14	122/118L	16.0	6.00G	815	215	1500	3305	770	112	1320	2910	770	112
8.25R16	G/14	128/126L	16.5	6.50H	865	235	1800	3970	670	97	1700	3750	670	97
8.25R16	H/16	128/124L	16.5	6.50H	865	235	1800	3970	770	112	1600	3525	770	112
8.25R20	H/16	139/137K	17.0	6.5	974	236	2430	5360	930	135	2300	5070	930	135
9.00R20	H/16	144/142K	18.0	7.0	1019	259	2800	6175	900	130	2650	5840	900	130
10.00R20	H/16	146/143K	19.5	7.5	1054	278	3000	6610	830	120	2725	6005	830	120
10.00R20	J/18	149/146J	19.5	7.5	1054	278	3250	7160	930	135	3000	6610	930	135
11.00R20	J/18	152/149J	20.5	8.0	1085	293	3550	7825	930	135	3250	7165	930	135
12.00R20	J/18	154/151K	20.5	8.5	1125	315	3750	8270	830	120	3450	7610	830	120
11R22.5	G/14	144/142L	19.6	8.25	1065	279	2800	6175	720	105	2650	5840	720	105
11R22.5	H/16	148/145L	19.6	8.25	1065	279	3150	6940	850	123	2900	6390	850	123

● Made in China ● Made in Thailand



- Premium logging tyres applicable for all seasons including winter season
- Large and strong tread blocks with deep tread (32/32nd) guarantee exceptional traction on snow and mud road surface
- Durable tyre casing and improved rubber compound provide excellent tyre life and resist chipping and chunking



● : Recommendable

## EZ372

Size	LR / PR	Service index	Tread Depth (mm)	Standard Rim	Overall Diameter (mm)	Section Width (mm)	Max. Load Capacity at Cold Inflation Pressure							
							Single				Dual			
							(kg)	(lbs)	(kPa)	(psi)	(kg)	(lbs)	(kPa)	(psi)
11R22.5	G/14	144/142J	25.4	8.25	1065	279	2800	6175	720	105	2650	5840	720	105
11R22.5	H/16	148/145J	25.4	8.25	1065	279	3150	6940	850	123	2900	6390	850	123
11R24.5	G/14	146/143J	25.4	8.25	1116	279	3000	6610	720	105	2725	6005	720	105
11R24.5	H/16	149/146J	25.4	8.25	1116	279	3250	7160	830	120	3000	6610	830	120

● Made in China ● Made in Thailand



# EZ870



● : Recommendable



Super robust block provide outstanding traction on off road surface



Center tie bar design minimize longitudinal elongation and deformation



Stone ejector platforms prevent tread damage from stone drilling



Brand new flagship tyre for mining application with Enhanced tyre life and durability based on PSCT

Special mining compound helps resist chipping, chunking and tearing for a better mileage

Size	LR / PR	Service index	Tread Depth (mm)	Standard Rim	Overall Diameter (mm)	Section Width (mm)	Max. Load Capacity at Cold Inflation Pressure							
							Single			Dual				
							(kg)	(lbs)	(kPa) (psi)	(kg)	(lbs)	(kPa) (psi)		
6.50R16	F/12	110/105F	13.5	5.50F	185	750	1060	2335	670	97	925	2040	670	97
7.00R16	G/14	118/114F	19.0	6.50H	865	235	1800	2910	770	112	1180	2600	770	112
7.50R16	G/14	122/118F	16.5	6.00G	215	815	1500	3305	770	112	1320	2910	770	112
8.25R16	H/16	128/124F	19.0	6.50H	235	865	1800	3970	770	112	1600	3525	770	112
9.00R20	H/16	144/142F	24.5	7.0	1019	259	2800	6175	900	130	2650	5840	900	130
10.00R20	J/18	149/146D	25.0	7.5	1065	278	3250	7160	930	135	3000	6610	930	135
11.00R20	J/18	152/149D	24.5	8.0	1096	293	3550	7825	930	135	3250	7165	930	135
12.00R20	J/18	154/151F	25.5	8.5	1136	315	3750	8270	830	120	3450	7610	830	120
12.00R20	L/20	156/153F	25.5	8.5	1136	315	4000	8820	900	131	3650	8050	900	131
12R22.5	J/18	152/149F	24.5	9.00	1096	300	3550	7830	930	135	3250	7160	930	135
13R22.5	J/18	156/151D	25.5	9.75	1136	320	4000	8820	875	128	3450	7610	875	128

● Made in China    ● Made in Thailand



Brand new flagship tyre for mining application with Enhanced tyre life and durability based on PSCT  
Special mining compound helps resist chipping, chunking and tearing for a better mileage

- Super robust block provide outstanding traction on off road surface
- Centre tie bar design minimise longitudinal elongation and deformation
- Stone ejector platforms prevent tread damage from stone drilling



● : Recommendable

# EZ310

Size	LR / PR	Service index	Tread Depth (mm)	Standard Rim	Overall Diameter (mm)	Section Width (mm)	Max. Load Capacity at Cold Inflation Pressure							
							Single			Dual				
							(kg)	(lbs)	(kPa) (psi)	(kg)	(lbs)	(kPa) (psi)		
12.00R20	L/20	156/153B	25.5	8.5	1136	315	4000	8820	900	131	3650	8050	900	131

● Made in China



- Aggressive lug design with large blocks at tread center provides excellent traction and braking on rough roads with mud or gravel and is self-cleaning for ease of maintenance
- Applicable in mining, logging, construction or rock and quarry operations with some very short on-high-way use possible
- Special tread compounds resist chipping and chunking in rugged off-road conditions



● : Recommendable  
● : Available

# CB972/CB972E

Size	LR / PR	Service index	Tread Depth (mm)	Standard Rim	Overall Diameter (mm)	Section Width (mm)	Max. Load Capacity at Cold Inflation Pressure							
							Single			Dual				
							(kg)	(lbs)	(kPa) (psi)	(kg)	(lbs)	(kPa) (psi)		
8.25R16(CB972)	H/16	128/124J	18.0	6.50H	865	225	1800	3970	770	112	1600	3525	770	112
215/75R17.5(CB972)	H/16	135/133G	15.0	6.00	769	216	2180	4805	850	123	2060	4540	850	123
225/80R17.5(CB972)	J/18	132/129G	17.0	6.75	811	226	2000	4410	850	123	1850	4080	850	123
235/75R17.5(CB972)	H/16	143/141G	17.0	6.75	799	242	2725	6005	875	128	2575	5675	875	128
9.00R20(CB972)	H/16	144/142F	22.0	7.0	1019	259	2800	6175	900	130	2650	5840	900	130
10.00R20(CB972)	H/16	146/143F	24.0	7.5	1065	278	3000	6610	830	120	2725	6005	830	120
10.00R20(CB972)	J/18	149/146F	24.0	7.5	1065	278	3250	7160	930	135	3000	6610	930	135
11.00R20(CB972)	J/18	152/149F	24.5	8.0	1096	293	3550	7825	930	135	3250	7165	930	135
12.00R20(CB972)	J/18	154/151F	25.5	8.5	1136	315	3750	8270	830	120	3450	7610	830	120
12.00R24(CB972)	L/20	160/157C	25.0	8.5	1226	315	4500	9920	900	131	4125	9090	900	131
12.00R24(CB972E)	L/20	160/157C	32.0	8.5	1238	315	4500	9920	900	131	4125	9090	900	131
325/95R24(CB972E)	M/22	162/160D	32.0	9.00	1228	325	4750	10470	850	123	4500	9920	850	123
11R22.5(CB972)	G/14	144/142G	23.0	8.25	1065	279	2800	6175	720	105	2650	5840	720	105
11R22.5(CB972)	H/16	148/145J	23.0	8.25	1065	279	3150	6940	850	123	2900	6390	850	123
12R22.5(CB972)	J/18	152/149F	24.5	9.00	1096	300	3550	7830	930	135	3250	7160	930	135
275/70R22.5(CB972)	H/16	148/145J	20.0	8.25	964	276	3150	6940	900	130	2900	6395	900	130
295/80R22.5(CB972)	H/16	150/147K	21.0	9.00	1050	298	3350	7390	830	120	3075	6780	830	120
295/80R22.5(CB972)	J/18	152/149J	21.0	9.00	1050	298	3550	7830	900	131	3250	7160	900	131
11R24.5(CB972)	G/14	146/143F	23.0	8.25	1116	279	3000	6610	720	105	2725	6005	720	105
11R24.5(CB972)	H/16	149/146F	23.0	8.25	1116	279	3250	7160	830	120	3000	6610	830	120

● Made in China    ● Made in Thailand



- Aggressive lug design with large block at tread center designed for mining, rock and quarry operations
- Wide tread and special tread compounds resist chipping, chunking, and tearing
- Stone rejector platform prevents trapped stones from punching deeper and piecing belt



• : Recommendable

## CB919

Size	LR / PR	Service index	Tread Depth (mm)	Standard Rim	Overall Diameter (mm)	Section Width (mm)	Max. Load Capacity at Cold Inflation Pressure							
							Single			Dual				
							(kg)	(lbs)	(kPa) (psi)	(kg)	(lbs)	(kPa) (psi)		
• 10.00R20	H/16	146/143F	23.5	7.5	1065	278	3000	6610	830	120	2725	6005	830	120
• 10.00R20	J/18	149/146F	23.5	7.5	1065	278	3250	7160	930	135	3000	6610	930	135
• 11.00R20	J/18	152/149F	25.5	8.0	1096	293	3550	7825	930	135	3250	7165	930	135
• 12.00R20	J/18	154/151F	25.5	8.5	1136	315	3750	8270	830	120	3450	7610	830	120
• 12.00R20	M/22	158/155C	25.5	8.5	1136	315	4250	9370	970	141	3875	8540	970	141
• 12.00R24	L/20	160/157C	32.0	8.5	1238	315	4500	9920	900	131	4125	9090	900	131
• 11R22.5	G/14	144/142G	23.0	8.25	1065	279	2800	6175	720	105	2650	5840	720	105
• 11R22.5	H/16	148/145J	23.0	8.25	1065	279	3150	6940	850	123	2900	6390	850	123
• 12R22.5	J/18	152/149F	23.5	9.00	1096	300	3550	7830	930	135	3250	7160	930	135
• 13R22.5	J/18	156/151F	24.0	9.75	1136	320	4000	8820	875	128	3450	7610	875	128
• 295/80R22.5	H/16	150/147K	21.0	9.00	1050	298	3350	7390	830	120	3075	6780	830	120
• 295/80R22.5	J/18	152/149J	21.0	9.00	1050	298	3550	7830	900	131	3250	7160	900	131

• Made in China    • Made in Thailand



- Special tread compounds resist chipping and chunking in rugged off-road conditions
- Robust tread block help promote traction and floatation capacity on rough roads
- Applicable for low speed mining service



• : Recommendable

## CB332

Size	LR / PR	Service index	Tread Depth (mm)	Standard Rim	Overall Diameter (mm)	Section Width (mm)	Max. Load Capacity at Cold Inflation Pressure							
							Single			Dual				
							(kg)	(lbs)	(kPa) (psi)	(kg)	(lbs)	(kPa) (psi)		
• 7.00R16	G/14	118/114J	18.0	5.50F	785	200	1320	2910	770	112	1180	2600	770	112
• 7.50R16	G/14	122/118J	18.0	6.00G	815	215	1500	3305	770	112	1320	2910	770	112
• 8.25R16	H/16	128/124J	16.5	6.50H	865	235	1800	3970	770	112	1600	3525	770	112
• 8.25R20	H/16	139/137E	19.0	6.5	974	236	2430	5360	930	135	2300	5070	930	135
• 9.00R20	H/16	144/142D	20.5	7.0	1019	259	2800	6175	900	130	2650	5840	900	130
• 10.00R20	J/18	149/146D	23.5	7.5	1065	278	3250	7160	930	135	3000	6610	930	135
• 11.00R20	J/18	152/149D	24.5	8.0	1096	293	3550	7825	930	135	3250	7165	930	135
• 12.00R20	J/18	154/151D	25.5	8.5	1136	315	3750	8270	830	120	3450	7610	830	120
• 12.00R24	L/20	160/157C	25.5	8.5	1226	315	4500	9920	900	131	4125	9090	900	131

• Made in China    • Made in Thailand



- Aggressive blocks provides outstanding traction on rough roads
- Suitable for all season and all position application on mud and sand terrain with some short on high-way use
- Cool-running compound enhances toughness casing



• : Recommendable

## CB905

Size	LR / PR	Service index	Tread Depth (mm)	Standard Rim	Overall Diameter (mm)	Section Width (mm)	Max. Load Capacity at Cold Inflation Pressure							
							Single			Dual				
							(kg)	(lbs)	(kPa) (psi)	(kg)	(lbs)	(kPa) (psi)		
• 8.25R16	H/16	128/124J	16.5	6.50H	865	235	1800	3970	770	112	1600	3525	770	112
• 10.00R20	H/16	146/143F	24.0	7.5	1065	278	3000	6610	830	120	2725	6005	830	120
• 10.00R20	J/18	149/146D	24.0	7.5	1065	278	3250	7160	930	135	3000	6610	930	135
• 11.00R20	J/18	152/149D	24.5	8.0	1096	293	3550	7825	930	135	3250	7165	930	135
• 12.00R20	J/18	154/151D	24.5	8.5	1136	315	3750	8270	830	120	3450	7610	830	120
• 295/80R22.5	H/16	150/147G	21.0	9.00	1050	298	3350	7390	830	120	3075	6780	830	120
• 295/80R22.5	J/18	152/149F	21.0	9.00	1050	298	3550	7830	900	131	3250	7160	900	131

• Made in China    • Made in Thailand



- Special tread compounds resist chipping and chunking in rugged off-road conditions
- Robust tread block help promote traction and floatation capacity on rough roads
- Applicable for low speed mining service



• : Recommendable

## EZ330

Size	LR / PR	Service index	Tread Depth (mm)	Standard Rim	Overall Diameter (mm)	Section Width (mm)	Max. Load Capacity at Cold Inflation Pressure							
							Single			Dual				
							(kg)	(lbs)	(kPa) (psi)	(kg)	(lbs)	(kPa) (psi)		
• 7.00R16	G/14	118/114J	18.0	5.50F	785	200	1320	2910	770	112	1180	2600	770	112
• 7.50R16	G/14	122/118J	18.0	6.00G	815	215	1500	3305	770	112	1320	2910	770	112
• 8.25R16	H/16	128/124J	16.5	6.50H	865	235	1800	3970	770	112	1600	3525	770	112
• 8.25R20	H/16	139/137E	19.0	6.5	974	236	2430	5360	930	135	2300	5070	930	135
• 9.00R20	H/16	144/142D	20.5	7.0	1019	259	2800	6175	900	130	2650	5840	900	130
• 10.00R20	J/18	149/146D	23.5	7.5	1065	278	3250	7160	930	135	3000	6610	930	135
• 11.00R20	J/18	152/149D	24.5	8.0	1096	293	3550	7825	930	135	3250	7165	930	135
• 12.00R20	J/18	154/151D	25.5	8.5	1136	315	3750	8270	830	120	3450	7610	830	120

• Made in China



## URBAN

Frequent speed changes and turning  
Resistance to curb impact  
Excellent road grip and durable high mileage



### STEER/TRAILER



CR906II

AZ675

AZ687

### DRIVE



MD703



- Four rib tread pattern provides uniform wear and excellent traction on wet and dry road.
- Deep and wide tread enhances mileage for exceptionally long tyre life
- Reinforced shoulder and steel sidewall help deliver long casing life and retreadability
- Sidewall protector ribs help resist sidewall damage from turning, backing and braking when used in urban neighborhoods.
- Cool-running compound delivers low rolling resistance meaning more fuel efficiency



• Recommendable

## CR906/CR906II

Size	LR / PR	Service index	Tread Depth (mm)	Standard Rim	Overall Diameter (mm)	Section Width (mm)	Max. Load Capacity at Cold Inflation Pressure							
							Single				Dual			
							(kg)	(lbs)	(kPa)	(psi)	(kg)	(lbs)	(kPa)	(psi)
11R22.5(CR906II)	H/16	144/142J	20.0	8.25	1065	279	2800	6175	720	105	2650	5840	720	105
11R22.5(CR906II)	J/18	148/145J	20.0	8.25	1065	279	3150	6940	850	123	2900	6390	850	123
255/70R22.5(CR906)	H/16	140/137J	17.5	7.50	936	255	2500	5510	830	120	2300	5070	830	120
275/70R22.5(CR906II)	H/16	148/145J(152/148F)	20.0	8.25	964	276	3150	6940	900	130	2900	6395	900	130
275/80R22.5(CR906)	H/16	149/146J	19.0	8.25	1012	276	3250	7165	850	123	3000	6610	850	123
295/80R22.5(CR906)	H/16	150/147M	19.0	9.00	1050	298	3350	7390	830	120	3075	6780	830	120
295/80R22.5(CR906)	J/18	152/149L	19.0	9.00	1050	298	3550	7830	900	131	3250	7160	900	131

• Made in China • Made in Thailand



- Excellent sidewall protection minimizes scuff damage from turning and braking
- Extra deep tread for long tyre life and high pattern volume
- The zig-zag rib provide outstanding traction on city bus application



• Recommendable

## AZ675

Size	LR / PR	Service index	Tread Depth (mm)	Standard Rim	Overall Diameter (mm)	Section Width (mm)	Max. Load Capacity at Cold Inflation Pressure							
							Single				Dual			
							(kg)	(lbs)	(kPa)	(psi)	(kg)	(lbs)	(kPa)	(psi)
305/70R22.5	L/20	153/150J	19.0	9.00	1018	317	3650	8050	900	130	3350	7390	900	130

• Made in China



- Deep tread depth and optimised rib width ensures outstanding mileage performance
- Zig-zag groove provides excellent traction and braking
- 3D siping helps improved traction and even wear.
- Excellent sidewall protection minimizes scuff damage from turning and braking



• Recommendable

## AZ687

Size	LR / PR	Service index	Tread Depth (mm)	Standard Rim	Overall Diameter (mm)	Section Width (mm)	Max. Load Capacity at Cold Inflation Pressure							
							Single				Dual			
							(kg)	(lbs)	(kPa)	(psi)	(kg)	(lbs)	(kPa)	(psi)
11R22.5	G/14	144/142J	20.6	8.25	1065	279	2800	6175	720	105	2650	5840	720	105
11R22.5	H/16	148/145J	20.6	8.25	1065	279	3150	6940	850	123	2900	6390	850	123

• Made in China



- Extra deep tread for long tyre life with excellent retreadability
- Zigzag main grooves provide improved traction and braking performance
- Excellent sidewall protection minimizes scuff damage from turning and braking



• Recommendable

## MD703

Size	LR / PR	Service index	Tread Depth (mm)	Standard Rim	Overall Diameter (mm)	Section Width (mm)	Max. Load Capacity at Cold Inflation Pressure							
							Single				Dual			
							(kg)	(lbs)	(kPa)	(psi)	(kg)	(lbs)	(kPa)	(psi)
11R22.5	G/14	144/142J	20.6	8.25	1065	279	2800	6175	720	105	2650	5840	720	105
11R22.5	H/16	148/145J	20.6	8.25	1065	279	3150	6940	850	123	2900	6390	850	123

• Made in China



## WINTER

Contribute to safety and operating in winter conditions  
Outstanding grip performance on ice and snow road surface  
Stable handling during braking and turning



## STEER/TRAILER



NS785    NZ780    NZ782    NZ787    NZ788

## DRIVE



ND783    IceTrac N2



- Wide and deep circumferential grooves enhances removal of snow and ice
- Specific tread compound keep rubber softness in low temperature with good performance
- Wide tread with advanced block and sipe design provides extra traction for snow and ice road conditions



• : Recommendable

### NS785

Size	LR / PR	Service index	Tread Depth (mm)	Standard Rim	Overall Diameter (mm)	Section Width (mm)	Max. Load Capacity at Cold Inflation Pressure							
							Single			Dual				
							(kg)	(lbs)	(kPa) (psi)	(kg)	(lbs)	(kPa) (psi)		
225/80R17.5	H/16	123/122L	15.0	6.75	811	226	1550	3415	700	102	1500	3305	700	102
225/70R19.5	G/14	128/126M	16.0	6.75	811	226	1800	3970	760	110	1700	3750	760	110
245/70R19.5	H/16	136/134J	18.5	7.50	845	248	2240	4940	830	120	2120	4675	830	120
265/70R19.5	H/16	140/138J	19.5	7.50	867	262	2500	5510	775	112	2360	5200	775	112
385/55R22.5	L/20	160K(158L)	15.0	12.25	996	386	4500	9920	900	130	-	-	-	-
385/65R22.5	L/20	160K	15.0	11.75	1070	394	4500	9920	900	130	-	-	-	-
295/80R22.5	J/18	154/149L	18.0	9.00	1050	298	3750	8270	900	131	3250	7160	900	131
315/70R22.5	L/20	156/150K(152/148L)	17.0	9.00	1020	312	4000	8820	900	130	3350	7390	900	130
315/80R22.5	J/18	154/151M(156/153L)	18.0	9.00	1076	312	3750	8270	830	120	3450	7610	830	120
315/80R22.5	L/20	157/154K	18.0	9.00	1076	312	4125	9090	900	130	3750	8270	900	130

• Made in China • Made in Thailand



- Wide open shoulder deliver additional traction without compromising tread life
- Specific tread compound keep rubber softness in low temperature with good performance
- Studable tread design provides extra traction for snow and ice road conditions



• : Recommendable

### ND783

Size	LR / PR	Service index	Tread Depth (mm)	Standard Rim	Overall Diameter (mm)	Section Width (mm)	Max. Load Capacity at Cold Inflation Pressure							
							Single			Dual				
							(kg)	(lbs)	(kPa) (psi)	(kg)	(lbs)	(kPa) (psi)		
295/80R22.5	J/18	154/149L	21.0	9.00	1050	298	3750	8270	900	131	3250	7160	900	131
315/70R22.5	L/20	154/150K(152/148L)	19.0	9.00	1020	312	3750	8250	900	130	3350	7390	900	130
315/80R22.5	J/18	156/153K(154/151L)	21.0	9.00	1082	312	4000	8820	850	123	3650	8050	850	123
315/80R22.5	L/20	157/154J	21.0	9.00	1082	312	4125	9090	900	130	3750	8270	900	130

• Made in Thailand



- Wide open shoulder deliver additional traction without compromising tread life
- Specific tread compound keep rubber softness in low temperature with good performance
- Studable tread design provides extra traction for snow and ice road conditions



• : Recommendable

### IceTrac N2

Size	LR / PR	Service index	Tread Depth (mm)	Standard Rim	Overall Diameter (mm)	Section Width (mm)	Max. Load Capacity at Cold Inflation Pressure							
							Single			Dual				
							(kg)	(lbs)	(kPa) (psi)	(kg)	(lbs)	(kPa) (psi)		
11R22.5	H/16	148/145L	19.6	8.25	1065	279	3150	6940	850	123	2900	6390	850	123
11R24.5	H/16	149/146L	19.6	8.25	1104	279	3250	7160	830	120	3000	6610	830	120

• Made in China



- Strong biting edges guarantee excellent traction on dry and slippery road surface, especially in winter
- Specific tread compound offer good mileage without scarifying wet traction
- Wide open shoulder deliver additional traction without compromising tread life



• : Recommendable

### NZ780

Size	LR / PR	Service index	Tread Depth (mm)	Standard Rim	Overall Diameter (mm)	Section Width (mm)	Max. Load Capacity at Cold Inflation Pressure							
							Single			Dual				
							(kg)	(lbs)	(kPa) (psi)	(kg)	(lbs)	(kPa) (psi)		
6.50R16	F/12	110/105L	13.5	5.50F	750	185	1060	2335	670	97	925	2040	670	97
7.00R16	G/14	118/114L	14.0	5.50F	785	200	1320	2910	770	112	1180	2600	770	112
235/75R17.5	G/14	143/141J	16.0	6.75	797	242	2725	6005	875	128	2575	5675	875	128
225/70R19.5	G/14	128/126N	16.0	6.75	226	811	1800	3970	760	110	1700	3750	760	110

• Made in China



- Strong biting edges guarantee excellent traction on dry and slippery road surface, especially in winter
- Specific tread compound offer good mileage without scarifying wet traction
- Wide open shoulder deliver additional traction without compromising tread life



## NZ782

Size	LR / PR	Service index	Tread Depth (mm)	Standard Rim	Overall Diameter (mm)	Section Width (mm)	Max. Load Capacity at Cold Inflation Pressure							
							Single				Dual			
							(kg)	(lbs)	(kPa)	(psi)	(kg)	(lbs)	(kPa)	(psi)
11R22.5	G/14	144/142L	19.6	8.25	1054	279	2800	6175	720	105	2650	5840	720	105
11R22.5	H/16	148/145L	19.6	8.25	1054	279	3150	6940	850	123	2900	6390	850	123
11R24.5	G/14	146/143L	20.6	8.25	1116	279	3000	6610	720	105	2725	6005	720	105
11R24.5	H/16	149/146L	20.6	8.25	1116	279	3250	7160	830	120	3000	6610	830	120

🇨🇳 Made in China 🇹🇭 Made in Thailand



- Wide tread provide stability while improving handling on wet and snowy road
- Extra deep tread depth provide long original tread life
- Open shoulder grooves deliver additional traction without compromising tread life
- 3D siping provide excellent traction and braking



## NZ788

Size	LR / PR	Service index	Tread Depth (mm)	Standard Rim	Overall Diameter (mm)	Section Width (mm)	Max. Load Capacity at Cold Inflation Pressure							
							Single				Dual			
							(kg)	(lbs)	(kPa)	(psi)	(kg)	(lbs)	(kPa)	(psi)
11R22.5	G/14	144/142L	21.6	8.25	1065	279	2800	6175	720	105	2650	5840	720	105
11R22.5	H/16	148/145L	21.6	8.25	1065	279	3150	6940	850	123	2900	6390	850	123
11R24.5	G/14	146/143L	21.6	8.25	1116	279	3000	6610	720	105	2725	6005	720	105
11R24.5	H/16	149/146L	21.6	8.25	1116	279	3250	7160	830	120	3000	6610	830	120
275/80R22.5	J/18	149/146L	20	8.25	1012	276	3250	7165	850	123	3000	6610	850	123

🇨🇳 Made in China 🇹🇭 Made in Thailand



- New trailer winter tyre for severe weather conditions
- Maximized snow and ice grip with special tread compound and CAD tread pattern



## NZ787

Size	LR / PR	Service index	Tread Depth (mm)	Standard Rim	Overall Diameter (mm)	Section Width (mm)	Max. Load Capacity at Cold Inflation Pressure							
							Single				Dual			
							(kg)	(lbs)	(kPa)	(psi)	(kg)	(lbs)	(kPa)	(psi)
385/55R22.5	J/18	158L	16.0	11.75	1070	394	4250	9370	850	125	-	-	-	-
385/65R22.5	L/20	160K	16.0	11.75	1070	394	4500	9920	900	130	-	-	-	-

🇹🇭 Made in Thailand



ZHONGCE RUBBER GROUP CO., LTD.



[zc-rubber.com](http://zc-rubber.com)



[facebook.com/zcrubber](https://facebook.com/zcrubber)



[twitter.com/zc\\_rubber](https://twitter.com/zc_rubber)



[linkedin.com/company/zcrubber](https://linkedin.com/company/zcrubber)